



NETWORK

AUGUST 2022

A photograph of a man and a woman in a workshop. The man, with a grey beard and wearing a blue denim shirt, is holding a tablet and pointing at it. The woman, with dark hair and wearing a light blue denim jacket, is looking at the tablet and touching the handlebars of a bicycle. The background is filled with various bicycle parts and tools.

APPRENTICESHIP SYMPOSIUM



Celebrating

40 *years*

JOIN US AT OUR
**BUSINESS AFTER HOURS
ANNIVERSARY CELEBRATION**

OCTOBER 6, 2022 | 5:00-7:00 PM



*Scan for
a personal invitation
from Dan & Madonna*

902 W WABASH AVE | EFFINGHAM IL | 217.347.0220

LETTER FROM THE PRESIDENT

I want to start out this issue by thanking the Chamber Staff, Volunteers, and our generous Sponsors for making 2022 HAM-JAM a success!

We had a great turnout and the proceeds of the event will be going to a great program - the Chamber Foundation's Scholarship Programs. This year the Chamber Foundation awarded eight scholarships and we anticipate doing the same in 2023.

At the Chamber, we are gearing up for our Fall and Winter events. Be on the lookout for more information soon. One new offering I am excited to let you know about is the Apprenticeship Symposium which will be held on September 13th at the Holiday Inn Effingham. The focus of this new Workforce Development initiative is to educate our members about how apprenticeships can add to your talent recruitment and retention programs. Turn to page 10 to learn more.

As always, reach out to me or any of the Chamber staff (Becky, Nicole, and Jamie) to see how we may be of service to you and your business.



Lucinda Hart, CAE, MBA
President & CEO

Lhart@effinghamcountychamber.com | (217) 342-4147

THANK YOU TO OUR 2022 CAPITAL INVESTORS



HSBHS
St. Anthony's
Memorial Hospital



DIETERICH
BANK
Live for Today.
Bank for Tomorrow.

Midland
States Bank[®]



The City of
Effingham
Illinois



FIFTH THIRD BANK



First Mid
BANK & TRUST

HEARTLAND
DENTAL



SHERWIN
WILLIAMS.

Sarah Bush
Lincoln
Trusted Compassionate Care

J & J Ventures
EST. 1929

John
BOOS
Since 1887



KOERNER
DISTRIBUTOR, INC.

PATTERSON
TECHNOLOGY

Washington
Savings Bank

EVENT RECAP

BUSINESS AFTER HOURS

Crossroads Bank & the Lake Land College Foundation & Alumni Center & Workforce Development Center



COFFEE & CONNECTIONS

Village of Teutopolis



FIRST FRIDAY LUNCHEON

Chamber Foundation Scholarships

The Chamber Foundation of Effingham County celebrated the recipients of the 2022 Chamber Foundation Scholarships at the Annual Scholarship Recipient and Sponsor Luncheon in June.



Eight recipients were awarded \$1,000 scholarships of which four were local graduating high school seniors and four were adults who are starting or continuing their secondary education.

PLATINUM SPONSORS: *John Boos & Co, Koerner Distributor New Car Dealers Association*

GOLD SPONSOR: *Agracel, Inc*

SILVER SPONSORS: *Al's Tire Mart & Electronics, Effingham Asphalt J.B. Esker & Sons, Ken & Norma Lansing, Martin's Save-a-Lot, & Washington Savings Bank*

BRONZE SPONSORS

Lori Funneman & Frank & Ann Kabbes.

Since its inception in 1996, The Chamber Foundation of Effingham County has awarded 201 scholarships in the amount of \$238,000.

High School Senior Scholarship Recipients



(L-R): Britney Walls, Krista Phillips, Maria Poston & Sydney Hanfland

Adult Scholarship Recipients



(L-R): Alli Brumleve, Abby Bloemer, Emily Becker & Claire Beckman

Platinum Sponsors



(Back L-R) Mark Mayhood, Jake Traub, Matt Braunecker, Todd Probst & Bob Hecht
(Front L-R) Mark Schmidt, Mark Goeckner & Dean Kremer

EVENT RECAP

BUSINESS AFTER HOURS Effingham County Fairground



Thank you to everyone who sponsored, volunteered, worked, attended, participated in, and enjoyed this year's EffingHAM-JAM! Special thank you to the City of Effingham & Effingham County for letting HAM-JAM take over the Downtown area for a very hot weekend - it was truly a remarkable sight to see!

This event holds such a special place in our hearts not only because it is our largest event, but because so many businesses & community members come together to support the Chamber Foundation Scholarship Program.



**KOERNER
DISTRIBUTOR, INC.**

A HUGE thank you to our presenting sponsor, Koerner Distributor, Inc., who was instrumental in the success of HAM-JAM, and who continues to support the Chamber, its members, our initiatives, and Effingham County residents.

FIRST FRIDAY LUNCHEON



Social Media Marketing on TikTok and Instagram platforms presented by Deana Nuxoll of **Imagine This! Marketing Group**



KCBS Grand Champion **KCBS Reserve Champion**
Continental Barbecue Co. Triple H BBQ



Hometown Throwdown Grand Champion
Parking Lot Smokers

Hometown Throwdown Amateur BBQ Challenge

Top Hog Corporate - John Boos & Co

Top Hog Backyard BBQer - Porking Lot Smokers

Chicken

John Boos & Co, Wonkey Donkey

Pork

Porking Lot Smokers, Pearhead BBQ

Side Dish

John Boos & Co, Porking Lot Smokers

Sauce/Rub

Poe'd Smoke BBQ, Dan Hecht Chevrolet-Toyota

CAPITAL INVESTOR SPOTLIGHT

First Mid is a community-focused organization that provides a full-suite of financial services including banking, wealth management, brokerage, ag services, and insurance through a sizeable network of locations throughout Illinois, Missouri, and Texas, and a loan production office in the greater Indianapolis area. Together, the First Mid team takes great pride in providing solutions and services to our customers and communities and has done so over the last 157 years.

At First Mid we offer financial services for every step in life. Choose from a variety of personal accounts—from Savings and Money Markets to our Basic Checking and Premier Checking that offers Identity Theft & Fraud Protection.

Simplify your life with our free Online Banking and Bill Pay.

Instantly obtain your account information anytime, so you can effectively manage your personal finances anywhere you have computer access.

Use our Mobile Banking app to deposit checks with free mobile deposit, pay bills or pay other people, make transfers (even to external accounts), and view eStatements.

Control your debit card in our Mobile Banking app—turn your card off or on as needed, see merchant details on card transactions, set spending and geographic limits for your card, manage recurring payments, set up transaction allowances when you travel, and easily add your card to your mobile wallet and set it as the default card for payments.

Select from a full line of Treasury Management Services to complement our business checking accounts. We offer onboarding to every business client, ensuring you get your business account and services set up and know how to use them.

Capital Investors understand the importance of investing in advocacy, economic development, and regional branding. Capital Investors receive priority access to Chamber sponsorship and marketing opportunities and additional notoriety in publications & the Chamber website.

*Become a Capital Investor – contact
Membership Director Becky Brown at
Bbrown@effinghamcountychamber.com*

Apply for a Consumer Loan in person or online—no appointment necessary! Apply online for Mortgage pre-approval to know how much you can afford, then work with a local lender who knows the community.

Trust our experienced lenders to help you find the right financing—from SBA loans, Traditional Loans, and Lines of Credit to Accounts Receivable Financing.

Build your future with a First Mid Wealth Management professional who will work with you to understand your goals, answer your questions, and walk through your options hand in hand.

Protect yourself from loss with the right coverage—for yourself or for your employees.

First Mid has been serving Effingham and the surrounding communities since 1994. We are proud to be committed to our community as an Effingham County Chamber Capitol Investor. For more information about First Mid, visit www.firstmid.com.

**We offer financial services
for every step in life!**



**BANKING | INSURANCE
WEALTH MANAGEMENT**



**First Mid has locations in Illinois and Missouri.
Visit us in Effingham County or online.**

**ALTAMONT 101 W. Washington | 618-483-5151
EFFINGHAM 902 N. Keller Drive | 217-342-6111**

www.firstmid.com

Security products and/or insurance services are not insured by the FDIC, are not deposits or obligations of the bank, are not guaranteed and may lose value.





Welcome

Sarah Bush
Lincoln
Bonutti Clinic

FIRST FLOOR

- Walk-In Clinic** Suite 100
- Laboratory Services** Suite 101
- Diagnostic Imaging/MRI** Suite 102
- Physical and Occupational Therapy** Suite 103

 Sarah Bush
Lincoln

SBL Bonutti Clinic
1303 West Evergreen Ave. • Effingham
217-342-3400
www.sarahbush.org

SECOND FLOOR

Orthopedics and

Occupational Medicine Suite 200

- Joseph Ajdinovich, MD
- Peter Bonutti, MD
- Stacia Dennison, APRN
- Kayla Deters, APRN
- Timothy Gray, MD
- Evan Hakman, PA-C
- Jennifer Hess, APRN
- Frank Lee, MD
- Didi Omiyi, MD
- Louis Schwing, MD
- Nick Watkins, PA-C
- Nick Williams, PA-C

Interventional Pain

Management Suite 201

- Brian Ogan, MD
- Melissa Paholke, APRN

Internal Medicine Suite 203

- Louis Schwing, MD
- Megan Steffen, APRN

Pediatrics Suite 203

- Cari Fearday, PA-C
- Abby Welsh, MD

AFFILIATE ORGANIZATION SPOTLIGHT

Altamont, Illinois sits off Interstate 70 almost halfway between St. Louis and Terre Haute, Indiana. It's a quintessential small town with old brick buildings downtown, family run restaurants, and the host of the Effingham County Fair.

Altamont was designated a town in 1871. The Pennsylvania Railroad built the town close to a mound which gives Altamont its Romanticized name. Alta meaning high, mont meaning mountain or mound. Eventually, Altamont would have four different railroad lines, which led to the creation of multiple factories. The National Road, Rt. 40 goes through the north of town.

Many of Altamont's residents are the descendants of German immigrants. This is evident with the "auf wiedersehen" signs outside of town, the multiple Lutheran churches in the area, and the annual Schuetzenfest celebration highlighting Altamont's German heritage.

Altamont's schools are known as some of the best in the area. Its graduates include an MLB pitcher, doctors, successful business figures, and people who have worked in politics including jobs in Congress and the White House.

Altamont has a business scene that far exceeds the expectations of a town with 2,200 residents. Irwin Seating manufactures bleachers for the world's biggest stadiums and arenas. MBS designs greeting cards and other promotional items for veterinary clinics and more across the country.



Alwerdt's Gardens attracts visitors from throughout Central Illinois, and offers some of the finest flowers and landscaping in south central Illinois.

Altamont has more restaurant options than towns twice its size. Joe's Pizza offers quality Italian food in a laid back environment. El Rancherito brings savory Mexican options to town. Luke's Bar and Grill, the Open Door Diner, and Andrew's have perfected classic Americana food. Meanwhile, McDonalds and Subway offer quick options for residents and visitors looking for something to eat.

Unlike most small towns these days, Altamont still has a downtown grocery store. It also has a lumberyard, a home improvement store, a gym, two doctor's offices, an eye doctor, dentist, pharmacy, event center, nursing home, and more.

The towering grain elevators in town are a reminder of the importance of agriculture in the area. During harvest, the line of farm trucks to the grain elevators stretches throughout town. Meanwhile, FS and Effingham Equity assist local farmers.

Altamont offers a plethora of activities. At Ballard Nature Center, visitors can hike through acres of woods, restored prairie grasses, and wetlands. The Dr. Charles Wright House, a historic mansion listed on the National Register of Historic Places, offers weekend tours and hosts a wine tasting event in September. The Effingham County Fairgrounds hosts the Effingham County Fair in August, one of the finest county fairs in Illinois. The Chamber of Commerce hosts a "Hometown Christmas" downtown with ice skating and other activities. Union Cemetery has a striking, granite war memorial honoring Altamont's veterans. Pickleball courts are the newest addition to Altamont's parks.

If you're in the area, stop by Altamont for its small town charm! Stay for its amenities!



NON-PROFIT SPOTLIGHT



Community Support Systems is celebrating 60 years! Community Support Systems (CSS) offers fantastic, person centered vocational, residential, rehabilitative, and advocacy services to people with disabilities. Their mission is to enhance opportunities to live, learn, work and play!

In 1962, a group of parents and community members came together out of concern for a lack of support for their children with disabilities. Out of that concern, a day school for children was started and the early beginnings of CSS were formed. As those children aged out of the school system, day programs and work training areas were created to pull people into the mainstream workforce. Then, the need for housing grew, and group homes were built. That original group's vision of "something more" grew into what CSS is today.

Today, CSS employs about 130 employees who serve 3,100 people – infants, children, families, and adults with disabilities. Their advocacy services range widely – their Children and Family Connections program connects families who have children at risk with providers who can give the services they need. The Parent Training/Information Center offers help to parents to understand their children's rights and how to navigate the systems of the various disabilities channels. Advocacy is also a focus of CSS' Rehabilitative Program which offers case management and nursing services. Individuals are assessed for needs and hopes and dreams, and then programs are built to help them succeed in their goals. CSS offers six beautiful group home environments as well as intermittent help for people who live independently. The vocational programs offer job coaching, job placement help, training, and facility based jobs. They partner with a host of employers who hire individuals served by CSS. Many individuals have excelled in the workforce, sometimes just needing some job coaching to start.



One community aspect that they love at CSS is partnering with local businesses to help them meet their production needs. Employers like John Boos & Co., Stevens Industries, Inc., Fastenal, and Zerrusen Farms regularly employ CSS to complete a portion of their tasks to make their production easier. The individuals at CSS do a variety of jobs each day like folding corners that protect cabinetry and tables, making and bottling "Mystery Oil", bagging corn that is then sent to retailers, packaging screws, adjusting hinges, and making displays that appear in grocery stores! They also do mailings for companies who need occasional help to get things out timely. CSS is always looking for additional businesses with whom they can partner! With so many companies feeling the effects of the current workforce crisis, they would love to help keep production rolling for companies who need additional staff!

CSS is grateful to all who work to include people with disabilities into their daily lives. Community Support Systems thanks YOU for being part of the community! They will continue celebrating their 60 years with a CSS Cares 5K and Fun Run on September 10 at the CSS Harvester Street location in Teutopolis. More information can be found on the website – csscares.org. #csscares #bepartofthecommunity





BACK *to* SCHOOL | SALE!

Kitchen & Home Essentials

Stop in today for your back to school kitchen and home essentials! We have work tables and countertops that make great work stations for any space. Our large selection of cutting boards provide a great surface for any school lunch preparation. Not sure on what to get? We have gift packs for all ages. Stop in and speak to one of our Butcher Block Specialists today.

**VISIT US IN-STORE TO RECEIVE 20% OFF ONE SINGLE RETAIL PRICED ITEM. IN-STORE ONLY.
CANNOT BE USED ONLINE. SOME EXCLUSIONS APPLY. MAY NOT BE COMBINED WITH ANY OTHER OFFERS.**

Boos[®] JOHN BOOS FACTORY
Block[®] SHOWROOM & OUTLET

1703 AVENUE OF MID-AMERICA • EFFINGHAM, IL 62401
PH: (217) 347-7790 • BUTCHERBLOCKSPECIALIST.COM

Flexibility for you or your business with our Money Market Account.

Access your funds like a checking account,
but earn interest like a savings account.

1.45% APY*

\$25,000+
minimum daily balance

0.73% APY*

\$.01 - \$24,999.99
minimum daily balance

Apply In-Person or Online at Midlandsb.com/open-online

Interested in other promotions?

Contact us about our CD Special & Home Equity Line of Credit Special




855-696-4352



Midlandsb.com

Midland 
States Bank®

*Annual percentage yields (APY) are accurate as of 8/3/2022. Money Market special APYs are 0.73% APY for balances of \$.01-\$24,999.9 and 1.45% APY for balances of \$25,000+. Money Markets are paid with interest beginning to accrue no later than the business day we receive credit for the deposit of the noncash items (for example, checks.) Minimum balance to open a Money Market Account is \$2,500 and the minimum daily balance to obtain the disclosed APY is \$2,500. Fees could reduce earnings. Your interest rate may change at any time and without notice. This offer may end at any time and without notice. Public Funds and Financial Institutions are excluded.  Equal Housing Lender. Member FDIC.



APPRENTICESHIP SYMPOSIUM

A top goal many Effingham County businesses have is to propel their company forward, whether it be in customer service, market share, profits, internal opportunities, morale, or community outreach. The mission of the Effingham County Chamber is to “create connections that strengthen businesses and stimulate regional prosperity”, which is where the Workforce Development Committee comes in.

The Workforce Development Committee is dedicated to serving the members of the Chamber and growing the footprint of the Effingham County workforce. You may have read in previous 2022 Network features the committee's plans to ensure stable employment for the area and county businesses by assisting employers in the attraction, development, and training of a quality workforce through initiatives such as EC-JOBS (Effingham County Job Opportunities for Business Success), live & virtual job fairs, Trades & Skills Day, and Manufacturing Day.

The committee is excited to share plans for a new initiative to assist in this process—an Apprenticeship Symposium scheduled for September 13 at the Holiday Inn Effingham.

Apprenticeships are a game changer in work-based learning and a great way to invest in your

workforce. By definition, an apprenticeship is “a position as an apprentice: an arrangement in which someone learns an art, trade, or job under another”. Typically thought of as only being utilized in the trades, many industries are now using them for upskilling and recruitment.

In relation to recruitment, apprenticeships offer a win-win for the employer. It provides an avenue for existing highly-skilled employees to transfer knowledge. The apprentice is able to receive instruction and gain experience while being integrated into the company's culture.

Nate Carlson, Workforce Analyst and Apprenticeship Consultant for Local Workforce Innovation Area 23 (LWIA 23) housed at Lake Land College, will be the featured presenter. LWIA 23 provides local area businesses customizable services to help find, grow, and retain talent through on-the-job training, incumbent worker training, and youth work experience.

Carlson covers the Effingham County area and is charged with outreach and technical assistance of registered apprenticeships. He works one-on-one with businesses in developing and/or establishing apprenticeship opportunities within a business. Carlson

A panel discussion between local leaders in their field and community will speak on talent management and local programs available to businesses and individuals. Panelists include:



Jeff Fritchtnitch
Workforce Development
Director, EC-JOBS



Kim Kuchenbrod
Work-Based Learning & Talent Management
Administrator, Illinois State University,
and Contract Staff, Illinois Department of
Commerce & Economic Opportunity



Bonnie Moore
Director-Center for
Business & Industry,
LLC



Jerry Tkachuk
Director of Effingham Education
& Regional Ext. Centers, LLC



Norma Lansing
Effingham Regional Career Academy



will introduce guests to the ins and outs of the program. He will detail responsibilities and benefits of both non-registered (pre-apprenticeship and youth apprenticeship) and registered apprenticeships with the U.S. Department of Labor.

Discover how local employers are leveraging apprenticeship programs within their business with our second panel.



The Equity's Employee Relations Manager Robin Brown and Quad Graphics Production Support Director Nathan Butt will share their perspective and experience on how the program creates success

within their companies.

Apprenticeships are a tried and true process through the trades. You are invited and encouraged to see how the best practices of an apprenticeship program can be implemented into other industries and help shape the future of Effingham County.



Register today for the September 13 Apprenticeship Symposium by scanning the QR code above or visiting the Effingham County Chamber Event Calendar at EffinghamCountyChamber.com/events.

MEMBER BENEFITS

Your membership is a wise investment in the future of your business as well as our community. The Chamber's goal is to ensure we provide the programs and services that will assist in your business success.

Communicating with our members is key to finding out what programs and services the Chamber can provide to further assist our members and their businesses. I encourage you to share your Chamber experience with us - whether it's a face-to-face meeting, email, phone call, or a survey,

In August, a membership survey was distributed to our members to gain feedback on which current and future programs and services will help you and your business succeed.

A QR code was provided to make it quick and easy to take the survey. The QR code was sent out through various communication tools including this issue of the Network; at Chamber events; through email & text blasts, and a postcard mailing. We are asking for input from all Chamber member representatives.

The results from the survey are an essential tool for the Chamber staff to use in our 2023 planning. Suggestions



are also reviewed by the Membership Development Committee and recommendations are submitted to the Chamber Board of Directors for planning and implementing programs and services for the coming year.

Complete the survey and your name will be entered into the drawing to **win St. Louis Cardinal tickets!**

Land of Lincoln Credit Union has donated four tickets to the Cardinals vs. Cincinnati Reds 1:15 p.m. game on Sunday, September 18.

The deadline to complete the survey is **Wednesday, August 31**. The deadline to complete the survey is August 31st and the drawing for the Cardinal tickets will be on September 1st.

Becky Brown
Membership Director
bbrown@effinghamcountychamber.com
(217) 342-4147



**PEERtoPEER
NETWORKS**
Human Resources | Sales & Marketing | Small Business Owners



Build your network today
Scan or call the Chamber at (217) 342-4147



MEMBERSHIP SURVEY

DEADLINE:
**AUGUST
31, 2022**

PURPOSE

helps us align our programs & services
to you and your businesses benefit



SCAN

the QR code to provide feedback in a quick survey

CHANCE TO WIN

4 tickets to the St. Louis Cardinals vs. Cincinnati Reds game on 9/18/22

(217) 342-4147

2023 CHAMBER DESTINATIONS

an entire world is waiting for you - travel with us



SPOTLIGHT ON TUSCANY

Montecatini Terme, Lucca, Gothic Line, Winery Tour, Florence, Pisa, Cooking Class, Cheese Farm, San Gimignano, Local Wines & Famous Cuisine

May 2 - 10, 2023

9 Days | 10 meals: 7 Breakfasts & 3 Dinners

SHADES OF IRELAND

Dublin, Irish Evening, Kilkenny, Blarney Castle, Waterford Killarney, Jaunting Car Ride, Ring of Kerry, Farm Visit, Limerick, Cliffs of Moher, Galway, Castle Stay

October 18 - 27, 2023

10 Days | 13 Meals: 8 Breakfasts & 5 Dinners



Visit EffinghamCountyChamber.com/chamber-destinations-2 for more info

Inspired by love of family and caring about people.

SBL Altamont Medical Center



Welcoming New Patients

Please call for an appointment.

618-483-6151

SBL Altamont Medical Center
8 North Third St.

*Accepting most insurance carriers
including Blue Cross Blue Shield.*

left to right

Katie Koester, APRN Heather Forsys, APRN
Kim Burgess, APRN Randi Berg, APRN
John Opilka, DO

 Sarah Bush Lincoln

ECONOMIC DEVELOPMENT



Designs Unlimited, Inc. broke ground on their new office and production facility at 1106 W Jefferson behind McMahon Meats in Teutopolis. Expect to see some dirt moving soon.



The new turf is down and scoreboard is up at Effingham High School Klosterman Field at **Washington Savings Bank Stadium**.



Olney-based beverage shop, **Ginger Ale's** is building an Effingham store at the corner of Fayette & S. Walnut Street. Ginger Ale's serves sodas, teas, specialty coffees and espressos, smoothies, and frappes, with more than 75 flavor-shot options. Their drive-thru facilities also offer such items as breakfast foods, soft pretzels, and gourmet cookies.

Progress is being made at the new Fayette Avenue strip mall where **Domino's Pizza** will relocate to and Jersey Mike's Subs will open once completed. More businesses will be shared soon once confirmed.



Effingham Regional Growth Alliance

BUSINESS WEBINAR

STATE OF THE REGION

**THURSDAY
25 AUGUST**

**TIME
10:30 AM**

EXPERT PANEL

RICK PARKS - FIRST NATIONAL BANK OF WATERLOO

MATT FORCUM - SHELBY REALTY

KALA LAMBERT - ILLINOIS DEPARTMENT OF COMMERCE & ECONOMIC OPPORTUNITY



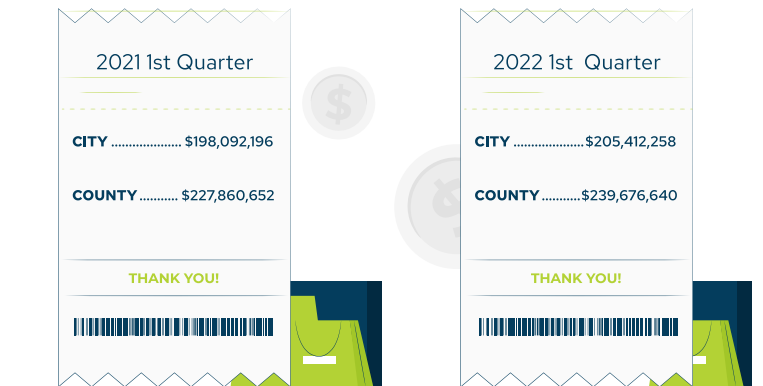
ILBusinessNavigators.com

REGIONAL EMPLOYMENT STATISTICS

June (preliminary) • May (revised) • April (revised)

	April		May		June	
	2022	2021	2022	2021	2022	2021
Total Labor Force	19,438	19,058	19,514	19,275	19,872	19,536
Eff. Co UE Rate	3.1%	4.0%	3.1%	3.3%	2.9%	4.0%
Unemployed	603	757	614	628	572	790
Employed	18,826	18,301	18,900	18,647	19,300	18,746
Illinois UE Rate	4.4%	7.1%	4.5%	6.7%	4.7%	7.9%
US UE Rate	3.3%	5.7%	3.4%	5.5%	3.8%	6.1%

RETAIL SALES STATISTICS





Bushue
Background Screening
LIVESCAN FINGERPRINTING AND BACKGROUND SCREENING SERVICES

Fingerprinting and Background Screening Services

- ☐ Nationwide Criminal
- ☐ County Criminal Search
- ☐ Federal District Criminal
- ☐ Medical/Government Sanctions
- ☐ Alias Search
- ☐ MVR
- ☐ FMCSA Clearinghouse
- ☐ Employment Verification
- ☐ Education Verification
- ☐ Reference Check

For a full list of services please visit our website!
www.bushuebackgroundscreening.com
 Phone: (217) 342-3042

FAITH. FAMILY. COMMUNITY.

ALL PART OF OUR LEGACY SINCE 1978



THREE Z PRINTING

902 W. Main St. | Teutopolis, IL | www.threez.com

Save These Dates

13th Annual —

GOLF BENEFIT

Friday, Sept. 30, 2022

For sponsorship information, visit
stanthonyshospital.org/golf

October 13, 2022

Women's Health Showcase

Keller Convention Center

Tickets will be \$10 per person
 or \$80 per Table of 10.

Watch our Facebook page
 for more information.
 Registration will be live in September.

 **HSSt. Anthony's Foundation**

 **HSSt. Anthony's Memorial Hospital**

meet your new marketing team.

Have your marketing needs outgrown your personnel?

A partnership with ITMG gives you the **resources of our entire agency for less than the cost of one full-time employee.**

We provide the skills of a graphic designer, copywriter, web developer, videographer, photographer, and a digital marketer... all in a predictable monthly package.

imaginethis!

MARKETING GROUP

branding & design • web development • photography & video • digital marketing • strategy

217.342.2661
thinkcreatedo.com



FALL DRAW



VIRTUAL
\$5,000 GRAND PRIZE*

WEDNESDAY, SEPT. 21, 2022

f LIVE @ 5:30PM

@EFFCOCHAMBER

presented by:



Midland
States Bank®



Scan me to
purchase a ticket

1 IN 10 TICKETS* WIN CASH OR PRIZE

To purchase tickets,
visit EffinghamCountyChamber.com/events
or call (217) 342-4147

**\$50/
ticket**
*only 300 available



*Disclaimer: reverse raffle prize money will be reduced if all 300 tickets are not sold. Winner of Grand Prize is responsible for applicable taxes.

Proceeds benefit Chamber Workforce Initiatives

MEMBER NEWS



Brett Hartman of **Kingery Printing Company** attended the 2022 Great Lakes Graphics Association (GLGA) awards celebration to receive Kingery Printing awards for Best of Category, Best of Division, and an Award of Excellence. These awards are given based on the quality of printing and graphic design.



Joe Sippers Cafe announced the acquisition of Hiatt Coffeeworks. Emily & Brennan Debenham, Owners of Joe Sippers Cafe in Downtown Effingham, purchased Hiatt Coffeeworks from Kevin & Christy Hiatt, original founders of Joe Sippers Cafe.



Land of Lincoln Credit Union at the ribbon cutting of their new location at 1302 Thelma Keller Avenue

First National Bank of Waterloo announced a merger with Village Bancshares, Inc. to acquire The Village Bank.



Jeanine Heuerman was named Rotarian of the Year for the **Sunrise Rotary Club**.



Siemer Milling Company coproducts tower was featured in the first quarter of the Milling Journal.

AKRA Builders has promoted Landon Williams to Project Manager and Larry Moore is celebrating 25 years with the company

Coldwell Banker First Realty has a new name, Shelby Realty Services and a new owner, Matt Forcum. The new website is ShelbyRealty.com, toll free number is (855) 215-3400, or local number is (217) 342-2775.

Effingham Builders Supply announced the addition of Caleb Mette as a 4th generation owner and company President, joining his father, Bill Mette, as co-owners. EBS also introduced Kyle Kloss as Retail Sales General Manager.

Entec Services announced the promotions of Ashleigh Brown, P.E. to Vice President, Operations and Steve Woods to Director, BAS Field Operations.



Deputy Chief Kurt Davis graduated from the FBI National Academy.



Illinois Chamber of Commerce Board announced Ann Wagner with **Vantage Outsourcing** as new Chairperson.

MEMBER NEWS

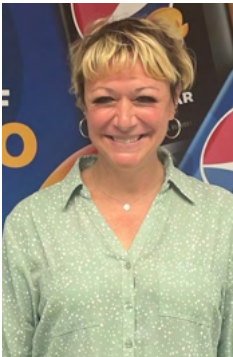


James Wortman has been named President of **Wortman Printing, Inc.** and Lyndsay Uphoff has been added as a Customer Service Representative. Del Wortman will continue as the company sales representative and to serve customers in a semi-retired capacity. Wortman Printing was established in Effingham in 1990

by Del and has been serving the community from its current location on South Banker Street since 1995.



Springfield Clinic announced their affiliation with Runde Clinic in Teutopolis, now named Springfield Clinic Runde. With this affiliation, they also welcome Eric Bloemer, MD; Brittany Denton, APRN, CNP; Hank Habing, APRN, CNP; Becky McGinnis, APRN, CNP; and Emily Nosbisch, APRN, CNP to the staff.



Josie Georges is the new On Premise Manager for **Pepsi MidAmerica**.



Kyle Lindsey is the newest lender at **Bank of Hillsboro's** Effingham branch.

SDS Technology announced the appointment of Sherry Waldo as General Manager. Waldo joins the leadership team of President & CEO Steve Schallert, Purchasing & Office Manager Vanessa McKee, and Service Manager Tim Woodall.



If you have news you want to share with the Chamber membership on special awards, recognition, employee promotions, etc., e-mail the information to: Nicole Morrison at nmorrison@effinghamcountychamber.com.

Baseball Card Connection

Celebrating 30 years

MBI Construction

Celebrating 50 years

Community Support Systems

Celebrating 60 years

J.B. Esker & Sons

Celebrating 75 years

WELCOME TO THE CHAMBER!



APPLIANCE MEDIX LLC

Devon Plante, CEO/Lead Appliance Technician
103 W Poplar Dr., Effingham • (217) 343-5202
Appliance Repair

MIDLAND INSTITUTE

Austin Brooks, Executive Director
1201 Network Centre Dr., Effingham
(217) 821-6747
www.midlandinstitute.com
Non-Profit Organization

Pay it Forward Membership from Midland States Bank

EFFINGHAM AREA LIVING COMMUNITY PUBLICATION

Carol Shuff, Publisher
(217) 649-3823
www.facebook.com/EffinghamAreaLiving
Media & Publishing

LEANN'S LEGACY

Barb Starwalt, President
6480 E 2200th Ave, Jewett • (217) 663-7491
www.facebook.com/LeAnnsLegacy
Non-Profit Organization

Pay It Forward Membership from Sarah Bush Lincoln

THE REALIFE PROCESS® COACHING SERVICES

Teresa McCloy, Owner
214 W Jefferson, Effingham • (217) 273-4091
www.therealifeprocess.com
Consulting-Business Development



FLEX N GATE EFFINGHAM LLC

Dave Vukelich, Human Resource Manager
2701 S Banker, Effingham • (217) 278-2633
www.flex-n-gate.com
Manufacturing

BOOTS & SOLES

Jill Schultz, Owner
320 W Jefferson St, Effingham • (217) 342-6833
www.bootsandsoles.com
Retail
Referred by: Jill Schultz, Effingham Performance Center

DAV-DISABLED AMERICAN VETERANS

Dave Althoff, Commander
405 Vulcan Drive, Effingham • (217) 347-0551
Non-Profit Organization
Pay It Forward Membership from Sherwin Williams



TRUE FORWARD COACHING

Maggie Meylor, Founder
(262) 623-0359
www.trueforward.biz
Consulting-Business Development

Calendar of Events

August

25 | Business After Hours
@ J.B. Esker & Sons

September

5 | Chamber Office Closed

**8 | Ribbon Cutting &
Business After Hours**
@ Sarah Bush Lincoln
Bonutti Clinic

9 | First Friday Luncheon
@ Keller Convention Center

13 | Apprenticeship Symposium
@ Holiday Inn Effingham

14 | Coffee & Connections
@ Wright at Home Interiors

15 | Ribbon Cutting
@ Effingham Pelvic Health
& Wellness

18 | PAVE Town Hall Meeting
@ Effingham Event Center

21 | Fall Draw Reverse Raffle
@ Facebook Live

22 | Business After Hours
@ McDevitt, Osteen, Chojnicki
& Deters, LLC

October

6 | Manufacturing Day
@ Effingham Event Center

**6 | Business After Hours
& 40th Anniversary**
@ Patton Printing & Graphics

7 | First Friday Luncheon
@ Keller Convention Center

13 | Fall Radio Days
@ WXF

20 | Business After Hours
@ Stevens Industries, Inc.
Childcare Center

SAVE THE DATE:

11/16/22 Top Community Leaders Dinner

Dates & locations are subject to change.

Please check the Chamber website calendar for the most up to date & accurate information.

Have an upcoming event you would like to share?
Submit it via the online form at the bottom of the website calendar.





Sarah Bush Lincoln Bonutti Clinic

The SBL Bonutti Clinic is a multi-specialty clinic designed to serve the medical needs of the community in a spacious and comfortable facility. After 18 months of construction, the clinic is fully open. Sarah Bush Lincoln is proud to be a contributing member of the community.

Sarah Bush Lincoln

Trusted Compassionate Care



Learn more about the Apprenticeship Symposium
See page 10.

PRST STD
U.S. POSTAGE
PAID
EFFINGHAM, IL
PERMIT NO. 172

(217) 342-4147 | EffinghamCountyChamber.com

903 N. Keller Drive, PO Box 643
Effingham, IL 62401