

the
CHAMBER

360

Issue 5 • 2016

YOU'RE ALWAYS A
WINNER WITH
THE CHAMBER!



START

Effingham County Chamber of Commerce

Effingham • Montrose • Teutopolis • Dieterich • Watson • Mason • Edgewood • Altamont • Beecher City • Shumway



AWARD-WINNING EXCEPTIONAL CARE BECAUSE QUALITY MATTERS.

HSHS St. Anthony's is dedicated to providing our community with exceptional care. So we are very proud to be recognized by these national and state organizations for our commitment to quality measures and performance.

Top Performer on Key Quality Measures® by the Joint Commission
The Joint Commission's Gold Seal of Approval® for Joint Replacement Program Certifications
2015 Illinois Performance Excellence Bronze Award for Commitment to Excellence.

St. Anthony's will always be here for our neighbors with the award-winning care they deserve. ***Because quality matters.***



Where you come first.



Dear Friends,

For the benefit of our members. These words are the beginning of the Chamber's mission statement and the cornerstone of the Chamber's work to promote, introduce and connect people, resources and ideas to achieve business success and community growth in Effingham County.



40 Year Recognition by Illinois Association of Chamber of Commerce Executives

As you look through the Chamber 360 annual review, you will see many ways that the Chamber's efforts benefit Chamber members and the greater Effingham area business community. From being recognized as Lake Land College's Business Partner of the Year to launching our new website and hosting Illinois Governor Bruce Rauner at Effingham County Manufacturing Day, the Chamber is engaging in conversations that impact the business community today and into the future.

These conversations will continue in 2016 as we work to establish the Effingham Regional Career Academy, expand existing programs and create new ones to fulfill the #1 need of area employers for a skilled and trained workforce. And, as we begin planning for the Chamber's Centennial in 2017, when we will celebrate the rich history of community leadership that has made the Effingham County Chamber of Commerce the leading business organization in Effingham County for 99 years.

Our focus remains on support for our members and ways, through the Chamber, that businesses can build new relationships and find opportunities for their continued growth and success.

Thank you for your support of the Chamber. It is our privilege to partner with and represent you as the Voice of Business for Effingham County.

Best wishes for an outstanding 2016,

Norma Lansing
President & CEO
Illinois Accredited Chamber Executive

Table of Contents

Welcome and Introduction	3
Chamber Foundation	5
Strengthen Your Network	8
2016 Excellence in Business	13
Business Spotlight	14
Chamber Members	33
Calendar of Events	38



EFFINGHAM COUNTY
CHAMBER OF COMMERCE
Engaging Business and Community

903 North Keller Drive • P.O. Box 643
Effingham, IL 62401
217.342.4147 • EffinghamCountyChamber.com

Dear Chamber Members,

As another year passes and my time as the Board Chairman has come to an end, I would like to take this opportunity to reflect on the achievements of 2015. I have to start by thanking the Chamber staff, the Board of Directors, and all the volunteers that helped us accomplish so much.

This year, the Chamber continued to provide all the great networking opportunities that the community has come to rely on. In addition to all these wonderful events, the Chamber focused on issues that will make a lasting impression on our County and surrounding communities - employee skills, attraction and retention of talent, and how to promote Effingham County as a great place to live, work, and do business.

To further understand employers needs and current employee skills, a Workforce Skills Taskforce was developed to investigate skillset gaps. To assist in closing these gaps, a number of training opportunities were provided throughout the year. Lake Land College supported this effort by certifying coursework and offering college credit for many of the seminars.

One of the programs that I am most proud to be a part of is the Effingham Regional Career Academy. It is approaching realization through the collaboration of the Chamber, local businesses, state and local governments, local high schools and, Lake Land College. The Academy will be located on the Kluthe Center campus and will provide technical training to prepare high school students and incumbent workers for jobs today and in the future. There has been widespread support for this project including a placeholder for funds in the State's budget. Planning has already begun, including the creation of several committees which will deal with everything from curriculum, private funding, benchmarking tours, governance, and ongoing operations of the facility.

In an effort to create awareness of the many careers available in Effingham County, which in turn allows us to attract and retain talent, the Chamber organized the 3rd Annual Manufacturing Day. 300 students from 16 schools within six counties had the opportunity to tour a variety of manufacturing companies. The students also attended a manufacturing expo where they were treated to lunch and a visit by Governor Rauner, who delivered a speech focused on preparing students for the workforce and the great career opportunities in manufacturing.

Following on the success of Manufacturing Day, a Skilled Trades Day was developed. The inaugural event was attended by 30 students from Altamont High School. The students toured the Y-Yard, Dan Hecht Chevrolet-Toyota, AKRA's construction of the Midland States Bank branch, as well as an America's Select Homes' residential construction site. The students were deeply engaged and we received positive feedback from the students and tour hosts alike.


The Chamber hosted a number of events to promote Effingham County and all the great things it has to offer. One of the new events developed was the Kickoff to Education, where representatives from local high schools, Lake Land College and Eastern Illinois University spoke about their approach to provide the best education opportunities possible.

To show our appreciation for their commitment to the State of Illinois, a reception was arranged to recognize Craig Lindvahl and Jim Schultz. Craig for his appointment to the Illinois State Board of Education and Jim as the new Director of Commerce and Economic Opportunity.

Although the Chamber spends a lot of time focusing on business, education, and legislative issues, we still know how to have a good time. A few of this year's fun activities included the Annual Golf Outing, the Fall Social, and the EffingHAM Jam.

This is just a small sampling of the activities the Effingham County Chamber of Commerce developed, delivered or supported in 2015. I have thoroughly enjoyed my time as the Board Chair and know that I am leaving it in the capable hands of Norma and her team as well as the new Board Chair Jeff Fritchitch.

Sincerely,



Joe Forbes
2015 Board Chairman



aren't members. We need to be intentional in our delivery of programming, intentional in building relationships, and intentional in supporting the needs of the businesses of today and future businesses of Effingham County.

The Effingham County Chamber Board has great energy. When a Board has energy, they thrive. I am excited to work with the Executive Committee and Board to be a High Powered Chamber of Commerce, and most importantly I am excited to work FOR the businesses of Effingham County.

Sincerely,



Jeff Fritchitch
2016 Board Chairman

Dear Chamber Members,

It is with great honor that I accept the responsibility of leading the Effingham County Chamber of Commerce. During the past three years, I have served as committee leader for Business Development and Workforce Development; all the while meeting many hard-working and inspiring business men and women who work and own businesses throughout the county.

As the baton is handed off from Mr. Joe Forbes to me; I would like to congratulate Joe on his leadership, and being an excellent example for me to follow as I prepared to transition into the Chairman role. Joe has maintained his vision for workforce development and has been a catalyst for moving the Chamber into a new era.

In 2016, the Effingham County Chamber has many opportunities ahead. As stated in the Altamont CUSD #10 Mission Statement, it's time to "transform opportunities into action." As Chairman, my priority is to work with President/CEO, Norma Lansing, and the Board Members to take action on the opportunities that are before the Chamber.

I have selected a one word theme for 2016, "INTENTIONAL". I believe we need to be intentional in our work and service to the current membership and also to the businesses that currently

Mission: The Chamber Foundation of Effingham County provides educational opportunities for youth and the workforce to build and strengthen personal and business capacity and foster a commitment to leadership and community development.

The Foundation is a 501(c)3 non-profit. Donations to the Chamber Foundation are tax deductible as a charitable contribution.



2015 Platinum Sponsors & Recipients



Exclusive Scholarship Sponsor: J & J Ventures Gaming



Exclusive Scholarship Sponsor: BK Resources



Exclusive Scholarship Sponsor: Legacy Harley Davidson

Supporting Education

Chamber Community Scholarship Program has awarded \$167,000 to 130 area residents since 1996.

Commitment to Leadership & Community Development



EffingHAM - JAM



DQ Eating Contest



Hometown Throwdown



EffingHAM - JAM BBQ Tasting



EffingHAM - JAM Music

2016 EffingHAM - JAM Dates: July 22-23, 2016

2016 Chamber Board of Directors



Board Members: Front Row: Jenny Walden – Consolidated Communications, Tzena Tucker – First Mid-Illinois Bank and Trust, Matt Cekander – Doebling, Winders & Co., Joe Forbes – Versatech, LLC, Dan Patton – Patton Printing & Graphics, Joan Thies – Stevens Industries, Inc., Diane Rieck – Express Employment Professionals, Norma Lansing, President & CEO

Back Row: Jeff Fritchitch – Altamont Community Unit #10 Schools, Alex Hagler – Hitachi Metals Automotive Components, Ed Deters – McDevitt, Osteen, Chojnicki & Deters, LLC, Cory Niebrugge – Niebrugge Lumber Company, Inc., Kevin Dust – Dust and Son, Rich Hartke – Teutopolis Community for Progress

Not pictured: Mel Stock – Midland States Bank, Marv Phillips – Cromwell Radio Group, Kelly Roepke – Y Yard Auto and Truck, Inc., Jeff Speer – RE/MAX Key Advantage, Dr. Josh Bullock – Lake Land College, Jim Arndt – City of Effingham, Jim Niemann – Effingham County Board, Greg Bushue – YBNNext, Jamie Sayne – Effingham Central Business Group, Dan Woods – Effingham Regional Growth Alliance

Our Vision:

The Effingham County Chamber of Commerce is a member-driven organization that provides leadership to promote, introduce and connect people, resources and ideas to achieve business success and community growth.

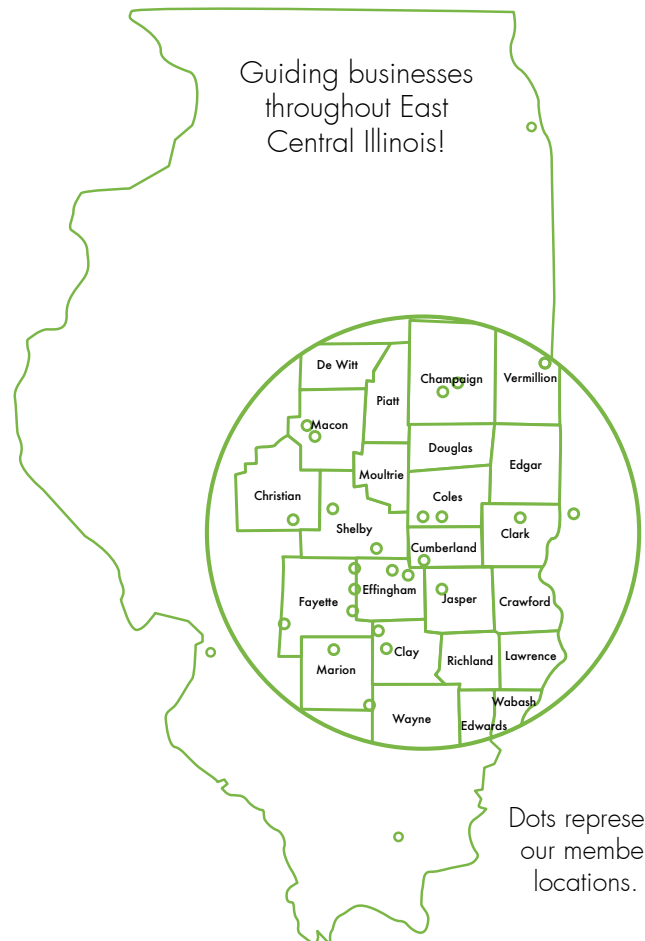
Our Mission:

For the benefit of our members, the Effingham County Chamber of Commerce serves as an advocate for business, delivers innovative programs and services, creates opportunities for businesses to connect and build relationships while partnering with the community to achieve lasting growth.

2015 Chamber Accomplishments

- Launched new Chamber website – www.effinghamcountychamber.com
- Received Business Partner of the Year Award from Lake Land College
- Governor Bruce Rauner attended Effingham County Manufacturing Day
- Hosted first Kickoff to Education Breakfast to support county schools
- Created Task Force to establish Effingham Regional Career Academy
- Hosted first-ever Southern Illinois Women's Economic Conference
- Partnered with Lake Land College to offer college credit for Chamber education programs
- Hosted first Effingham County Skilled Trades Day
- Partnered with The Alliance and Effingham County Board to develop a Regional Economic and Workforce Profile

Effingham County Chamber of Commerce





Open for business

Make your dreams a reality with our commercial banking services

Life.

POWERED BY

Washington

Savings Bank



www.washingtonsavings.net

EFFINGHAM

200 S. Banker St.
217.347.7173

1300 N. Keller Dr.
217.347.7127

MATTOON

1111 Charleston Ave.
217-235-5411



Member
FDIC



Chamber Cooperative Energy Buying Program

Cost Savings for your Commercial Energy and Natural Gas needs

Benefits of the Chamber Energy Buying Program:

- Low Fixed Rate Monthly Bills
- Long-term Budget Stability
- Group Buying Power
- Customer Service Assistance takes the headache out of billing errors and service issues
- Experienced Energy Professionals handle the details
- Free Energy Education and Training Programs



Our Energy Partners:



We are helping area businesses save hundreds of dollars on their energy bills!

Call (217) 342-4147 to learn more.

YBNext: Effingham County's Premier Young Professionals Organization

We offer young professionals from 21 to 45 the opportunity to network with each other and the area's top business leaders in social and professional settings. Professional development workshops provide career advancement while volunteer opportunities assist in the community development in Effingham County.

We now offer a
Corporate Membership
Program!

For More Information:

Call: 217-342-4147

Email: ybnextrsvp@gmail.com



We are

Local leaders committed to our
region's growth and prosperity

Economic development is a collaborative process, resulting in an environment that benefits our communities, as well as our businesses. Join us in this mission to help cultivate prosperity in the Effingham region.



The Alliance

Effingham Regional Growth Alliance

effinghamregionalalliance.com

217.342.4214



We engage in Conversations that impact the Business Community



Springfield Legislative Reception



Springfield Legislative Reception



Economic Forecast Panel



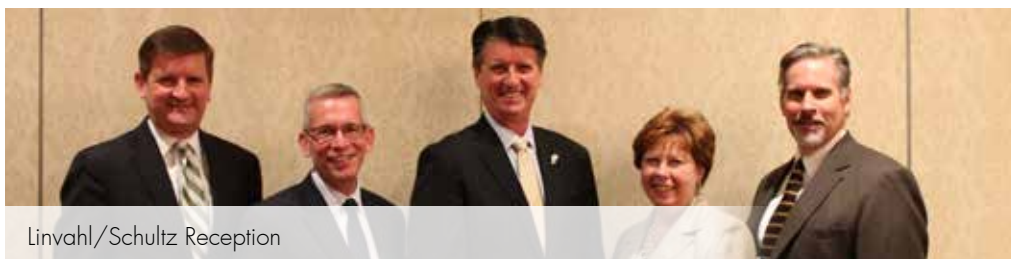
Congressman John Shimkus



Chamber Morning Buzz



Representative John Cavaletto



Linvahl/Schultz Reception

Effingham Regional Career Academy



Dr. David Glassman, EIU President



Candidate Forum

2015 Membership Survey Feedback

Greatest Value of Effingham County Chamber Membership

#1 Community Involvement & Leadership - Our members look to the Chamber to lead community efforts that impact the business community and create partnerships to achieve business growth and community success

#2 Business Connections - Monthly and Annual Business Events plus education and training programs provide opportunities for businesses to connect to relevant information, resources and other members

Most Popular Events & Services

#1 Networking - The Chamber's many programs and services provide businesses large and small opportunities to strengthen their network.

#2 Education & Training - Today's marketplace needs well-trained and skilled business owners, managers and employees and the Chamber has a full range of training programs.

#3 Advertising Opportunities - Exclusive members-only Chamber promotional avenues spread the word about what your business has to offer.

Chamber membership provides a great support system with over 50% of members indicating they prefer to use other Chamber members for their personal and business needs.

Whether you work from the Kitchen or the Boardroom, we are your Resource



Governor Rauner at Manufacturing Day Luncheon



Southern Illinois Women's Economic Conference



Business After Hours: Farm Bureau



Community Breakfast

Solutions to Workforce Problems



Seminars



Skilled Trades Day



Job Fair



Manufacturing Day

Look to the Chamber for your Professional Development and Training Needs...

- Our Partnership with Lake Land College earns you college credit
- Customer Service
- Technology
- Social Media
- Leadership
- Marketing
- Sales
- Communication
- Team Building
- Goal Setting
- Tax Planning
- Supervisory Skills
- Employment Law



Effingham Regional INCUBATOR NETWORK

Join the next generation of
entrepreneurs and consider starting
up your own business!

We currently have three Incubator locations: Effingham, Altamont & Dieterich (Teutopolis - Coming Soon!)

The Effingham Regional Incubator Network Provides:

- Shared office Space
- Technology
- Entrepreneurial coaching
- Educational experiences

The goal of a business incubator is to nurture the development of entrepreneurial companies and help them survive and grow during their start-up period when they are most vulnerable.

Contact the Effingham County Chamber of
Commerce for more information at

217.342.4147



Find us on Facebook:
Effingham County Incubator Network

This Project Powered By:
The Alliance
Effingham Regional Growth Alliance

We're on your team!

Chamber Ambassadors: Marty Stock – Homebuilders Plus, Inc., Jo Huskey – Enterprise Dynamics Inc., Steve Will – Dieterich Bank, Del Wortman – Wortman Printing, Randy Jones – Washington Savings Bank, Carol Hourigan – Three Chicks and a Stage, Mike Schabbing – Global Technical Systems Inc., Jerry Jansen – Century 21-Realty Concepts, Kathy Schroeder – Mary Kay Cosmetics, Jim Hecht – Dan Hecht Chevrolet-Toyota, Jay Buehnerkemper – Dieterich Bank

Not pictured: Greg Schumacher – Ameren Illinois, Kevin Gouchenover – Century 21-Realty Concepts, Eric Zeller – Effingham Ophthalmology Associates, Tonya Siner – 97.9 XFM - KJ Country 102.3, Jeff Muhlbachler – Muhlbachler Insurance Agency, Inc.



The Chamber hosted 25 Ribbon Cuttings in 2015!

Value In Membership

A recent Schapiro Study survey reveals that being active in local chamber of commerce is an effective business strategy. If respondents know that a small business is a member of its local chamber, the business enjoys:

49%

Increase in its consumer favorability rating

73%

Increase in consumer awareness

68%

Increase in its local reputation

80%

Increase in the likelihood that consumers will patronize the business in the future

Helping businesses grow...



www.effinghamcountychamber.com

...one member at a time.

Refer a member...
and receive special offers from your Effingham County Chamber of Commerce.

Complete this card and email to:
bbrown@effinghamcountychamber.com or fax to (217)342-4228.

Your name: _____

Your phone # _____

or email: _____


Name of business _____

you are referring: _____

Contact number: _____

Contact email: _____

Scan here to join online!



Advertise in the 2016 Chamber Network Magazine

Introducing the new bi-monthly business publication by the Effingham County Chamber of Commerce!

Call the Chamber today to reserve advertising!

(217) 342-4147



chambermaster

Free online tools for Chamber members to get noticed!

- Job Postings • Calendar of Events • Your business profile
- Hot Deals: Post your own & view other member's deals!
- It's mobile! Scan the QR Code on Page 34 to download the app and take these benefits wherever you go!

Get the most out of ChamberMaster online training and ChamberMaster University sessions are available

Headline News



2015 Citizen of the Year: Craig Lindvahl



2015 Excellence in Business: Dan Hecht



2015 Excellence in Business: Martin's IGA



2015 Volunteer of the Year: Lavanda Joergens



2015 Top Community Leaders Under 40



2015 Employee of the Year: Joan Buzzard



LLC Business Partnership of the Year



Bartender Challenge Winners



Governor at Stevens Industries



2014 Chamber Board Chairman: Mark Probst

01.17.17
**The Chamber Centennial
Year Begins**

Coming Soon
Member Discount
Program



Coming May 13

Regional Legislative Summit

Featuring James Schultz,
Director of the Illinois
Department of Commerce &
Economic Opportunity and
other state department heads

Deering Consulting
Dennis C. Deering
Consultant
319 West Lake Street
Salem, IL 62881
(618) 292-0101

RODAN+FIELDS
Independent Consultant

Congratulations to the 2016 Recipients

J & J Ventures Gaming

J & J Ventures' roots in Effingham County go deep.

From the late 1920's when HG (Jack) Jansen and Lawrence (Big Jack) Jansen formed J & J Music, servicing the coin-operated market in Central Illinois, the company has continued to change with the times – encompassing the highly regulated food service industry, legalized bingo and pull-tab market, vending, amusement games and video surveillance sales and installation – to becoming one of the largest video gaming terminal operators in Illinois.

J & J is the largest video gaming terminal operator south of Interstate 80 as well as the largest Illinois-based operator of amusement devices, having grown 500% since 2012.

The company remains locally-owned and operated by 3rd generation owner Jack Jansen, his mother Kay Jansen and Bob Willenborg, managing member and owner. They provide employment to over 150 area residents from their Effingham-based headquarters and operate facilities in Springfield, Marion, Collinsville, Centralia and Evansville, IN.

The company is known for consistently setting the pace with innovative and aggressive management techniques to ensure that their clients and partners receive the highest possible revenue return on their investment and their staff is nationally recognized by their peers in both amusement and gaming as industry leaders.



J & J staff members hold positions on the Illinois Coin Machine Operators Association Board and Illinois Licensed Beverage Association.

J & J's owners and employees are active in local organizations and many hold positions on area boards. They have always been active in the Effingham County Chamber and have enthusiastically invested in the communities served, creating a Charitable Foundation to further develop and emphasize our process for giving back to the communities we serve.

In 2015, J & J provided over \$200,000 in donations supporting area education, youth and family programs, fraternal and veterans' organizations, helping organizations for disease prevention, disabilities and for community development.

Probst Auto Body

Mark Probst hasn't let owning and operating a business in a small town affect how he operates Probst Auto Body and has used his mechanical skills and business acumen to build a business that generates over \$1 million in annual sales and routinely gives back to the community that supports his business goals and dreams.

Located along Route 33 in Dieterich, Probst Auto Body's 6400 square foot body shop focuses on outstanding customer service and quick and efficient repair work to build its business and customer base. It also involves extra touches like fixing that extra dent, cleaning each car they repair, offering loaner vehicles, following up with customers and a well-trained team of certified technicians.

Since 2003, Probst has grown his business from a one-man operation to a full-staffed and well-equipped full service body shop with 10 employees. His interest in cars started in high school and led to obtaining an associate's degree in collision repair and spending nine years working in a nearby body shop. Probst decided to follow his dreams and open his own body shop repair business in 2003. Probst credits the support of his wife, Christina, who believed in his vision to start a business from scratch, with no customer base and the long hours of being a one-person operation.



A new state-of-the-art body shop was built in 2007 and has grown steadily through Probst's determination to continually

improve his business.

It starts with a well-trained staff that recently became I-Car Gold Class certified with ongoing training in new vehicle technologies and the latest repair techniques.

Most recently, they have adapted to lean processes in their business which involves a more thorough and accurate repair plan. For the customer, it means getting your car back quicker with repairs being done more accurately according to your manufacturer.

Active community involvement also plays a role in the company's success. Probst became part of the national car giveaway, Wheels to Prosper in 2012, providing a reliable vehicle to a local resident in need and has been joined in this effort by two other local automotive companies, with 3 cars given away in 2015. All together 7 cars have been donated to well deserving, local families by this combined effort over the past 4 years.

Probst helps various area organizations put on fundraising car washes at his facility, donates their bounce house to local families and events and has also provided their painting skills for non-profits such as the Effingham County Pork Producers, Dieterich Sports Program and the Teutopolis Sportsbackers to name a few. Probst also helped found the Dieterich Business Association and is actively engaged in the Effingham County Chamber of Commerce, having served as Board Chairman in 2014.



Past Excellence Recipients

2011

Midland States Bank
Y-Yard Auto & Truck, Inc

2012

Patterson Technology Center
Legacy Harley-Davidson

2013

Heartland Dental
Siemer Milling Company

2014

Dieterich Bank
Versatech, LLC

2015

Dan Hecht Chevrolet-Toyota
Martin's IGA

BUSINESS SPOTLIGHTS

Effingham Country Club

One of Central Illinois' premier golf destinations, the Effingham Country Club (ECC) is a private, member-owned organization. The club was established in 1923 starting with just nine holes and 100 members. Since that time, ECC has flourished with increased membership and numerous renovations to both the grounds and the clubhouse facilities throughout the years. Opportunities for both social and golf memberships are available year-round.

The scenic Effingham Country Club offers a championship 18-hole golf course with full pro shop



facilities. The course is maintained in championship condition offering beautiful tree lined and water challenged fairways. The ECC provides a wide variety of opportunities to test and improve your skills including an all-weather driving range,

practice bunkers, and both putting and chipping greens. Members enjoy both skill and social opportunities

on the course through league play, tournaments, group lessons, golf outings for fundraising and more.

Families also enjoy the Effingham Country Club by taking advantage of junior golf league, the swimming pool and kiddie pool areas, poolside wait staff service and more. Recently, a major renovation was completed on the clubhouse interior turning the dining area into a warm, upscale restaurant and bar great for both families and friends.



Farnsworth

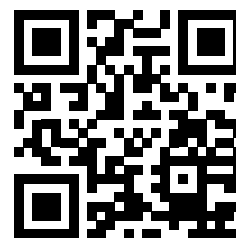
Opening in Effingham in 2001, Farnsworth Group offers full service engineering, site development, water/wastewater, mechanical, electrical, plumbing, construction, pipeline services as well as LEED consultation, grant writing and interior design to help shape the future of not only Effingham but the greater USA.

Through their 120 year history, Farnsworth Group has grown into a nationally recognized, full-service engineering and architecture firm. They have 18 offices in cities throughout the country, with nine of those located in Illinois. All of those professional and technical services can be provided through local Illinois offices. Farnsworth Group is an ENR Top 500 Firm.



More information about Farnsworth Group can be found at www.f-w.com.

Farnsworth Group, Inc is located at 400 W. Jefferson Avenue, Suite A, Effingham, IL 62401.



Country Rhodes

Established in 1998, Country Rhodes offers the greater Effingham County area a variety of corporate catering options including all-you-can-eat Fish Fry and Smoke House for fundraisers, multi-shift corporate catering for parties and celebrations and multiple other catering options.

Country Rhodes boasts two 40' mobile kitchens that can be brought on-site to provide fresh versatile catering options for corporate events in the local Illinois and Indiana area.

For more on Country Rhodes, go to www.countryrhodes.com or call them at 217.347.3474.

Country Rhodes is located at 1207 Network Centre Blvd, Suite 3C, Effingham, IL 62401.



McMahon Meats

McMahon Meats is owned and operated by Brent and Margo McMahon as an extension of the Teutopolis Locker Service (previously owned by Larry and Mert McMahon). With the launch of this new venture in a new building along U. S. Route 40 on the west side of Teutopolis, the McMahon family continues a proud family tradition of delivering fresh, premium products and quality service to the Effingham County community.

Many 'Locker Favorites' such as hog sausage will be available as well as a variety of new and exciting items: assorted fresh cuts of beef and pork, lighter fare



such as poultry and fish and a variety of deli meats and cheeses sliced to order.

McMahon Meats is located at 1112 W. Main Street, Teutopolis, IL 62467

For more information, visit www.mcmahonmeats.com or call them at 217.821.9708.

The Equity

The Equity is a locally owned and operated one-stop-shop for all of your hardware, farm, garden and greenhouse needs. Whether it's a backyard grill or a home remodel, The Equity is ready to serve in 17 counties in Central Illinois.



Established in 1919, the recently remodeled storefront boasts not just new fixtures but new products available to meet all of your repair,

refurbish and remodeling needs at home and at work.

For more information on The Equity, go to www.theequity.com.

The Equity is located at 201 W. Roadway Ave, Effingham, IL 62401.



Favorite Things

Newly established in September, Favorite Things is a one-stop-shop home décor and gift shop in downtown Effingham. Whether it's ready made or custom, Favorite Things offers unique wedding, baby, seasonal and all occasion gifts and gift baskets.

"We are constantly receiving merchandise so there's always something new to see," states Julie Buhnerkempe, owner operator of Favorite Things. "Whether it's home, office or baby, we can help you find the perfect décor or accent to pull the space



together. Our motto is Give. Create. Decorate. and that's what we do.

For more on Favorite Things, go to www.favoritethingseffingham.com or call them at 217.994.9204.

Favorite Things is located at 106 N. Banker St., Effingham, IL 62401

Lexington Inn

Effingham's newest hotel is also the first newly built Lexington Inn in the United States and since opening at the end of June 2015, Effingham's Lexington Inn & Suites was named the New Property of the Year by Vantage Hotels.



The newly constructed smoke-free property features 61 guest rooms and suites, heated indoor swimming pool with

Jacuzzi and sauna, fitness center, complimentary wireless Internet access and guest laundry facility. A hot deluxe continental breakfast is included and there is complimentary coffee available all day.

Corporate travelers will appreciate the convenience of the business center and complimentary business services. A 700 square-foot conference area has the flexibility to accommodate up to 100 guests.

Learn more about the Lexington Inn and Suites at www.lexingtoneffingham.com.

Richard E. Workman Sports and Wellness Complex

Opening to the public in 2016, this state of the art facility provides sports, fitness, wellness, and recreational activities for individuals, families, and organizations. From aquatics and personal training to youth sports and adult fitness, the Workman Sports Complex will strive to meet all the needs of the community.

The Effingham Park District was given a great opportunity to provide this fantastic facility that not only the City of Effingham can be proud of but the entire County can enjoy. It includes competitive and recreational swimming pools, regulation basketball and volleyball courts, an indoor track, fitness center and aerobics studio.

The facility is named after Dr. Richard E. Workman who kicked off the fundraising effort with a \$6 million donation. Over \$3 million more was donated by local businesses and individuals to get the facility off the ground and without raising park district taxes.

The Richard E. Workman Sports and Wellness Complex is located at 1301 N. Maple, Effingham, IL 62401.

More information can be found at www.workmansportscomplex.com.



Hodgson Mill

Hodgson Mill has grown from a local business into a national leader in whole grain products including stone-ground flours, cereals, side dishes, baking mixes and more and expanded their presence in late 2014 with the opening of The Mill Store which attracts travelers to its visible location at 1001 Ford Avenue, along Interstates 57-70.

The Mill Store provides a retail outlet for the popular Hodgson Mill whole grain products as well as offering a line of local jams, jellies, honey, syrup and candy as well as pottery and gifts. The Hodgson Mill Education

Center opened in 2015 offering cooking classes and demonstrations. New classes are available weekly.

Hodgson Mill's roots can be traced over a century ago in the rolling hills of the Missouri Ozarks, when Alva Hodgson

began a tradition of producing the finest all-natural, whole grain milled products from the nation's heartland. These high standards are still in use today in the modern Hodgson Mill plant located in Effingham's Business Park.

More information about Hodgson Mill can be found at hodgsonmill.com.



Stanfield Chiropractic

Stanfield Chiropractic is a full service modern chiropractic clinic offering the latest and most effective solutions to spinal related disorders and celebrating 25 years of service to the Effingham area in 2016.

The clinic is currently undergoing its fourth major construction event in company history. They moved into a newly constructed building at 414 West Jefferson

Avenue in 1994 and nearly doubled the clinic size with a 2007 addition. The current remodel will provide a more functional and esthetically pleasing environment of healing for the staff that includes four doctors, nine support staff serving thousands of patients.

More information about Stanfield Chiropractic can be found at www.doctorstanfield.com.

HSHS St. Anthony's Memorial Hospital

Since 1875, HSHS St. Anthony's Memorial Hospital has provided for the health care needs of the residents of the Effingham community and the south-central region of Illinois. St. Anthony's is one of 14 hospitals in Hospital Sisters Health System (HSHS), a health care ministry with hospitals and multi-specialty medical groups in Illinois and Wisconsin. HSHS is sponsored by Hospital Sisters Ministries, and Hospital Sisters of St. Francis is the founding institute. St. Anthony's Memorial Hospital is a 133-bed licensed acute care facility, providing inpatient, ambulatory, home health and hospice, with more than 800 colleagues and over 70 physicians on its Medical Staff. St. Anthony's approach to health care combines its Core Values of Respect, Care, Competence and Joy with the most modern technologies available today.

HSHS St. Anthony's has always strived to provide the most advanced technology close to home. In spring 2015, the hospital purchased a \$1 million MAKO® orthopedic system to offer patients robotic orthopedic surgery. The robotic arm technology provides our talented orthopedic surgeons with the equipment necessary to perform partial knee replacements and full hip replacements. Using CT scans transferred into the system, surgeons are able to map out a plan based on the patient's personal anatomy for the exact size and position of the knee or hip implant. It allows surgeons to target only the diseased portion of the joint, without compromising the healthy bone and tissue surrounding it by setting surgical boundaries, based on the pre-operative CT and the surgeon's plan. The robotic surgery is providing patients shorter hospital stays, more rapid recovery, and lasting positive results.



As a demonstration of the exceptional care HSHS St. Anthony's provides to the region, we received a number of awards this past year, including the following:

- 2015 Illinois Performance Excellence Bronze Award for Commitment to Excellence, for our efforts to adopt and apply continuous improvement principles throughout our organization.
- The Joint Commission's Gold Seal of Approval® for Joint Replacement Program Certification
- The Joint Commission 2014 Top Performer on Key Quality Measures®, for excellence in accountability measure performance shown to improve care for certain conditions such as Heart Failure, Pneumonia, Surgical Care, Venous Thromboembolism (VTE), and Stroke.
- Top-Ranked (Five-Star) Community Value Provider by Cleverley + Associates (Columbus, OH), based on our performance in these four areas: Financial Strength and Reinvestment, Cost of Care, Pricing and Quality.

HSHS St. Anthony's Memorial Hospital is located at 503 North Maple Street, Effingham, IL 62401.

**For more information
visit www.stanthonyhospital.org**

Patton Printing & Graphics

GROWING is the word that best describes Patton Printing & Graphics in 2016. Beginning at the end of 2015, Patton Printing started a full remodel including a 1200 sq. ft. addition. The growth process will also include new digital presses and wide format that will allow us to be the leader in technology. What an exciting time!

Dan & Madonna Patton started Patton Printing in 1982 as a small copy shop. They have expanded and grown over the years into a successful full service digital and onset commercial printing company.

For over 33 years, Patton Printing has offered their customers everything from design services to direct mail, postcards to newsletters, and promotional products. At Patton Printing, you can count on great customer service with the highest quality and on-time delivery.



**902 W. Wabash Avenue, Effingham, IL 62401
217.347.0220 • print@pattonprinting.com
www.pattonprinting.com**

**Chamber Conference Room is Available
to Chamber Members at no charge**

Seats 10-12 people.
Also available to rent for your business
needs: LCD Projector, Portable Sound
System, Video Camera with stand.

Call the Chamber office for details.



**Country Rhodes
Fundraising & Catering
provides quality food
delivered to you fresh
by our mobile kitchens!**

CountryRhodes.com

217.347.3474

Cornerstone

TRAVEL LLC

1007 W. Jefferson Ave.
Effingham, IL 62401



- Destination Weddings
- Cruise's
- Vacations
- Honeymoon Trips



Contact John, Desiree, or Tara today!

217-347-TRIP (8747)

email: cornerstone_travel@yahoo.com

Building for Tomorrow!



Expansion
Coming

Spring **2016**



CancerCare

SPECIALISTS
OF ILLINOIS

Crossroads Cancer Center

905 Medical Park Drive • Effingham, IL • 217.342.2066

www.CancerCareSpecialists.org



Beverly Hart - Meek
Investment Executive
Vice President

Tel. 217.342.5710
Toll Free 888.262.7902
Fax 217.342.5776
beverly.hart@53.com
www.53.com

200 E. Jefferson Ave.
MD K47621
Effingham, IL 62401



Grant Bushue
Investment Executive

Tel. 217.342.5736
Fax 217.342.5776
grant.bushue@53.com
www.53.com

200 E. Jefferson Ave.
MD K47621
Effingham, IL 62401




Jerry Jansen, GRI
Bus: 217-342-6080
Res: 217-868-5370
Cell: 217-343-3915
jerry@jerryjansen.com
www.century21realtyconcepts.com

111 S. Henrietta
Effingham, IL 62401


Each office is independently owned and operated.



PHONE 217-536-6961



MARXMAN EXCAVATING
GENERAL CONTRACTOR



ROBERT (BOB) MARXMAN
Owner

BULLDOZING
TRENCHING

9629 N 1200 ST
EFFINGHAM, IL 62401

Mapping Effingham's Progress!



PHELPS MAP SERVICE

P.O. Box 622
Charleston, IL 61920
PH. (217) 345-4007

phelpsmaps.com

BLESSINGS IN A BACKPACK

BACKPACK BALL

SAVE THE DATE!
FRIDAY, MARCH 4, 2016

Dueling Pianos - Back by Popular Demand!

WWW.EFFINGHAMBACKPACK.ORG



*Vintage • Modern • Local • Global
Home Goods and Gifts*

210 N. Banker St. • Effingham, IL 62401

Connect with us: www.freshdigsinc.com

Shop: 217-350-0812

BUILD YOUR FUTURE WITH US

For products and services that can help form the foundation of your financial life, turn to Prudential. LIFE • INVESTMENTS** • ANNUITIES • LONG TERM CARE* • RETIREMENT



Richard Hartke - Financial Advisor
The Greater Illinois Financial Group
The Prudential Insurance Company of America
210 S Second Street, Suite A • Effingham, IL 62401
Office 217-347-8801



Insurance issued by The Prudential Insurance Company of America, Newark, NJ and its affiliates. Prudential, the Prudential logo, the Rock symbol and Bring Your Challenges are service marks of Prudential Financial, Inc. and its related entities, registered in many jurisdictions worldwide. **Securities products and services are offered through Pruco Securities, LLC. Offering investment advisory services through Prudential Financial Planning Services (PPFS), a division of Pruco Securities, LLC (Pruco), pursuant to separate client agreement. Offering insurance and securities products and services as a registered representative of Pruco and an agent of issuing insurance companies. 1-800-201-6690 *Availability varies by carrier and state. 0221354-00004-00

Village

WINE & GIFT SHOP

109 S. Banker • Effingham • 217-347-0477
www.EffinghamVillagewine.com



STAFFING SOLUTIONS TO FIT YOUR BUSINESS NEEDS

Positions include:

- Clerical
- Administrative
- Customer Service (CSR)
- Reception

Temporary or long-term, Express has skilled workers ready to fit your business needs.

Contact us and see how Express can help.
(217) 347-2224
813 N 3rd Street
Effingham, IL 62401



ExpressPros.com/EffinghamIL

Midland States Bank

In 2016, Midland States Bank will celebrate 135 years in the banking industry and has been a living and growing part of the Effingham community, with two banking centers, the corporate headquarters and numerous ATMs around the area.

In 2005, Effingham State Bank officially became Midland States Bank and currently operates 28 offices throughout Illinois and Missouri. Providing a full range of trust and investment management, along with insurance and financial planning services, Midland States Bank prides itself on establishing and maintaining relationships with its customers and is committed to serving the financial needs of the communities it serves.

A new downtown Effingham branch opened in the Fall of 2015, providing a convenient and modern banking facility designed to meet the ever growing needs of their banking customers.



Midland States Bank's downtown Effingham branch is located at 110 South Fifth Street, Effingham, IL 62401.

Visit the bank online at www.midlandsb.com.



Blessings In A Backpack

With a goal of combating food insecurity for local area children, Blessings in a Backpack was started in 2013. With the help of volunteers and local area businesses, Blessings in a Backpack provides food for children who don't have access to regular meals during the weekends and breaks from school.

In 2015, Blessings in a Backpack conducted their first summer food program and is now serving almost 400 students weekly. Programs and fundraisers are held throughout the year to help raise money and supplies needed to keep this worthy endeavor going.



To see how you can help, visit www.effinghambackpack.org or email them at effinghambackpack@gmail.com.

Blessings in a Backpack can be reached at P.O. Box 28, Effingham, IL 62401.

Imagine This! Marketing Group

Imagine This! Marketing Group is the Effingham area's premier one-stop-shop marketing agency specializing in making an impact for your business. We strive to deliver the absolute best professional services to our clients helping achieve the results needed to stay current and relevant in their appropriate markets. ITMG has established many partnerships with area businesses and



nonprofit organizations to help achieve goals in growing local business and beyond.

Passion for community involvement is a top priority at ITMG. We are honored to be involved with many great area

organizations that help make our community what it is today. Donating resources to organizations such as Workman Sports Complex, Blessings in a Backpack, Trail Recreation Effingham County (TREC), Construction Trades Education Curriculum (CTEC) and others, is our civic duty to promote community awareness and growth. It is groups such as these who in turn will support a strong and prosperous future for our area.

Imagine This! Marketing Group invites you to see our diversified portfolio and new look! We are your local go-to for web design, HD video production, graphic design, social media management, public relations, branding and more. Let our forward-thinking team of marketing experts think, create, and do for you!

Tytia Habing Photography

Tytia Habing has been honing her skills as a fine art photographer for over 16 years. After living abroad for some time, Tytia came back to her hometown roots in 2011 to provide fine art prints, commissioned portraits, and commercial and editorial photography.

Habing has degrees in horticulture and landscape architecture and is a self-taught photographer. She's been published in National Geographic and other industry magazines and her work has been on exhibit nationally and internationally. She currently has work on exhibit at the Effingham Public Library, an upcoming exhibit in Lincoln, Nebraska and is in negotiations with a high profile gallery in New York for representation. A solo show is scheduled for Fall 2016 at the University of St. Francis Gallery in Peoria.

Habing's work is currently being considered for both the 2015 Black and White Photographer of the Year, sponsored by Leica and Critical Mass 2015. Her plans for 2015 include renovating a historic older home into a studio and gallery space.

Information about Tytia Habing Photography can be found at www.tytiahabing.com or www.tytiahabingphotography.com.



Washington Savings Bank

Washington Savings Bank has expanded and is growing! Acquiring the 1st Federal Savings and Loan of Mattoon allows for WSB to offer additional assets and financial opportunity not only locally, but also to surrounding communities. The mission of WSB is to be financially strong, progressive bank, serving our customers by providing quality, professional and innovative products and services they need and want, in a safe, sound manner with a friendly touch.

Community support and involvement is no stranger to Washington Savings Bank. The Bank's financial donation to organizations like the Effingham Public Library, food drives to area food pantry's and in-school programs including Teach Kids How To Save are prime example of their passion for our growing community and supports the bank's core values and overall mission.

Washington Savings Bank, the second oldest and largest customer owned financial institution in Effingham County now also serving the Mattoon area, offers a full line of personal and commercial deposit and loan products. The bank has received a 5-Star rating, the highest possible, from Bauer Financial for 25 consecutive years.



Express Employment Professionals

A leading staffing provider in the U.S., Canada and South Africa opened at 813 N. 3rd Street in Effingham, IL in 2015. Every day, we help job seekers find work and help businesses find qualified employees. Local owner Diane Rieck, MBA, PHR has been in the staffing industry since 1997 and opened her Express franchise in Coles County in 2006. She serves the Effingham County Chamber of Commerce as the Vice President for Membership Development.



Express is on a mission to put a million people to work each year. With a vision to be the number one career and hiring solution for our associates and clients in the communities we serve, she often says "it's not who we send, it's who we don't send." She and her team work diligently to place that right person for you and your business the first time.

Express started in 1983 and is headquartered in Oklahoma City, OK. Locally, Express has worked with over 355 different companies throughout a 6 county region of east central Illinois over the last 9 years.

Express Employment Professionals:
813 N 3rd Effingham, IL 62401
(217) 347-2224
www.expresspros.com/Effingham

1st National Bank of Waterloo



The First National Bank of Waterloo merged with Prairie National Bank of Effingham and Stewardson in 2015, bringing

their customer-focused approach and expertise to local businesses and residential customers.

Beginning in 1912, the First National Bank of Waterloo has been a financial leader in the communities they serve. Their team of banking experts is dedicated to providing financial support for community progress, building one-on-one customer relationships and committing time and leadership to local civic and charitable organizations.

First National Bank of Waterloo is still locally owned and operates nine banking centers serving Central and Southern Illinois, including Waterloo, Columbia, Millstadt, Effingham and Stewardson.

More information can be found at www.fnbwaterloo.com, or by calling (888) 231-3165.



Altamont Community Unit School District #10



With a commitment to educate, enhance abilities and transform opportunities into action for students in Altamont Community Unit 10 schools, the district provides many opportunities for students and parents to get involved and stay involved with enhanced

educational tools, career and technical learning, continuous building improvement and community involvement that motivate the whole student.

The district took another step to improving student learning experiences with the renovation of grade school classrooms over the summer of 2015, part of their ongoing building and athletic facility improvement program.

With a student body of over 370 students in pre-K through 12th grade students, the district strives to

provide 21st Century learning experiences with their 1:1 laptop program, junior high industrial technology program, student-led Farm to School Garden and many community involvement activities.



Altamont Unit #10 was recently ranked 68th among all school districts in Illinois in the Niche 2016 Best Schools for state test scores college readiness, graduation rates, SAT/ACT scores, teacher quality and student and parent reviews among other criteria.

Altamont Community Unit School District #10 is located in 7 South Ewing St, Altamont, IL 62411.

Events, information and sports news can be found at altamontschools.org.



Andrew Hanfland PE
Engineering Manager

office 217.342.5668
cell 217.343.6993
ahanfland@f-w.com



Power Up Your Business

with Consolidated Communications.



consolidated.com | 844.YOUR.CCI

Data & Internet | Voice | Cloud Services | Managed & Hosted | IT Services

Pet Wellness Center of Southern Illinois

In early spring of 2016, the Pet Wellness Center of Southern Illinois will open its new office at the corner of Evergreen Avenue and Outer Belt West in Effingham, IL.

This 4200 square foot facility is the dream of Drs. Stan Huels and Nanci Wood-Huels to bring the highest level of diagnostics and care available in the Southern Illinois region. The Pet Wellness Center is located on a 3 acre green space close to the TREC trail and Effingham Performance Center (EPC).

"We feel that the close proximity to these Effingham County icons speaks about who we are. Stan and I value health, wellness, and entertainment, which is portrayed in establishments like the TREC trail and the EPC. Our goal is to educate our clients about all the health care issues of today as well as help their pets live longer, healthier lives," stated by Dr. Wood-Huels.



"Effingham is a progressive hub for human health care and now Effingham can also be known as being the premier location for pet wellness and pet health care in the Southern Illinois region," she continued.

The Pet Wellness Center will provide all levels of care for client's pets in the form of elective surgeries, 24 hour manned emergency ICU service, house calls, therapeutic laser treatments, hospice care, boarding and grooming, and spa services, just to name a few. The center will take all forms of pet insurance and will also offer PPO discounts.

The clinic will maintain 3 doctors, Dr. Jean Czernski, DVM, Dr. Justin Suchomel, DVM,MS, and Dr. Nanci Wood-Huels DVM,MS. They will also have on staff two certified Veterinary Technicians, McKayla Weddell and Rebecca Wolff.

The Huels also operate the Altamont Veterinary Clinic. More information about both clinics can be found at www.altamontvetclinic.com.

Stevens Industries

The Stevens Industries story is like many others that make Effingham County unique. Starting from one man making wood products in his father-in-law's garage to becoming a full-line manufacturer of quality laminated products, from panels to furniture and cabinets and providing employment for over 450 area residents.

Founder Charles Stevens literally built his business from the ground up, hand-digging footings for his first building along Main Street in Teutopolis. A new larger facility was built in the early 1970s and Stevens Industries was born. The company is celebrating 60 years in business in 2016.

Stevens Industries provides innovative engineering, design, and craftsmanship, along with expertise that leads to cost-effective solutions for their global customer base. They provide the total package to meet their customers' needs through management, engineering and design, manufacturing and installation.

Their innovative laminate products are used in medical, educational and commercial settings and produced from their 430,000 square foot plant in Teutopolis.

Stevens Industries is the first manufacturer in the United States to produce material for furniture application and received national recognition in 2015 for its Legno



Collection of custom wood grain products. Stevens Industries is an integral part of the Teutopolis community and Effingham County as one of the top 10 employers in the county. It is a 100% Employee Owned company.



Stevens and their employee-owners are involved in their community, give back through contributions to many charities and school programs and support civic growth through active involvement in the Chamber. The company hosted Illinois Governor Bruce Rauner, area legislators and high school students during Effingham County Manufacturing Day in October 2015.

Stevens Industries is located at 704 West Main Street in Teutopolis. For more information about Stevens Industries, visit them at www.stevensind.com.





anatime
Event Group

PO BOX 363 * Effingham, IL 62401
www.anatime.com
618.322.6780



Ruben Boyajian, M.D.
General Surgeon

Emily Boyajian, APN
Nurse Practitioner

Breast Care Specialist • Surgical Oncology
General and Laparoscopic Surgery • Gastrointestinal Endoscopy

904 Medical Park Drive, Suite 2
Effingham, IL 62401
(217) 347-2255

rboyajianmd.com

FIFTH THIRD BANK PROUDLY SUPPORTS THE EFFINGHAM COUNTY CHAMBER OF COMMERCE

Fifth Third Bank. Member FDIC.



Inspiring Others to Inspire Everyone

We are proud to announce that we will have the 2015 Citizen of the Year, Craig Lindvahl, at our CEO Experience. This business conference will be sure to motivate and inspire all who attend. You don't want to miss this!

Learn Today. Lead Tomorrow.

Wednesday, February 3, 2016
Thelma Keller Convention Center
Event Starts at 1:00 pm

Speakers:

Jon Acuff, Habeeb Habeeb, Craig Lindvahl, Karen Wolters and a variety of breakout sessions will impact your business and life.

For More Information, Visit:
www.effinghamceo.com/ceoexperience

Effingham County
CEO Experience



@EffinghamCEO



DOEHRING, WINDERS & CO. LLP

Certified Public Accountants

400 W. Jefferson Ave. • Suite B
Effingham, IL 62401

(217) 342-0377 or (217) 342-3983
www.dwcocpa.com



**Americas
Best Value Inn**
by Vantage

1606 West Fayette Avenue
Effingham, IL 62401
217/342 - 4667

* Free Wi-Fi * Indoor Pool *
* Continental Breakfast *

www.americasbestvalueinn.com

Thelma Keller Convention Center at the Holiday Inn

Illinois' Premier Meeting and Conference Facility offers today's meeting participants a relaxed atmosphere, quality service and tempting cuisine designed to make every meeting impressive and productive. No matter what size event you are planning, we have a room just right for your needs!



1202 N. Keller Drive • Effingham, IL 62401 • www.kellerconventioncenter.com
217.347.5115 • 888.875.5115 • FAX 217.347.8757



**KOERNER
DISTRIBUTOR, INC.**
FINE WINES • SPIRITS • MALT BEVERAGES

Connect with us! 

Your Hometown Distributor
KoernerDistributor.com
(217) 347-7113




Evergreen
Nursing & Rehabilitation Center, LLC

*Stop In For
A Tour
Of Our Facility*



**Evergreen Rehabilitation
& Wellness Center**
Offers:
Rehab To Home
Respite Care
Hospice
Adult Day Care
Wound Care

1105 N. Wendt
Effingham, IL 62401

217-347-7121
www.evergreennursingrehab.com



aramark

1911 W. National Ave
Effingham, IL 62401

Uniform Services

(217) 342-4915

www.aramarkuniform.com

**Estate Planning
Estate Settlement
Business & Farm Planning
Nursing Home Planning**

FRISSE & BREWSTER LAW OFFICES



David M. Frisse
L. Kaye DeSelms Dent
Rick A. Brewster
Attorneys Practicing
in Illinois and Indiana

Our experienced attorneys know you have questions about planning for the future. We can help your family find the answers during a personal consultation or at one of our free, no-obligation workshops. Call one of our offices or visit our website for more information.

www.frissebrewsterlaw.com

Helping protect what's important to you.

111 Sheriff Street, Suite B
Paris, IL 61944
217.465.1234

2901 Ohio Blvd., Suite 110
Terre Haute, IN 47803
812.234.2777

2301 Hoffman Drive, Suite B
Effingham, IL 62401
866.631.2946



**BONUTTI
CLINIC**

217-342-3400

Keeping people moving, working & playing

- **Comprehensive Musculoskeletal Care**
- Orthopedic Surgery
- Arthritis Surgery
- Minimally Invasive Total Knee & Hip Replacement
- MAKOpasty Surgery
- Hip Resurfacing
- Cervical & Spine Surgery
- Elbow / Wrist / Hand Surgery
- Arthroscopic & Laser Surgery
- **Sports Medicine**
- **Occupational Medicine**
- **Industrial Urgent Care**
- Prompt treatment of sprains, strains, lacerations & other minor injuries
- **Complete Diagnostics**
- **Open MRI of Effingham**
- **Biomax Rehabilitation**
- **Custom Orthotics**

Orthopedic Surgeons

Peter Bonutti, MD/FAAOS/FACS
Timothy Gray, MD/FAAOS
Frank Lee, MD/FAAOS
Bernard Rerri, MD/FRCS(C)
Didi Omiyi, MD

Occupational Medicine

Karl Rudert, DO/FACEP

1303 W. Evergreen Ave
Suite 101
Effingham, Illinois
www.bonutticlinic.com

Medicare • Blue Cross Blue Shield • Healthlink • MultiPlan • Health Alliance • Coventry/Aetna

KINGERY Printing Company

Kingery Printing Company has grown to become one of the top 200 printing concerns in the United States. We proudly serve a broad spectrum of industries and this year added the franchise food industry to our repertoire. Printing and delivering menus and nutritional guides to more than 1,900 cafés throughout North America on a regular interval may sound easy until each café creates its own unique menu lineup and print quantity. Kingery Printing's outstanding customer service, innovative IT group, and plant technology all come together to meet the most challenging customer requirements.

Promoting environmentally conscious business practices, Kingery Printing conforms to strict procurement guidelines to provide our clients with eco-friendly commercial printing services. From our chain of custody certifications to the soy ink we use, and even to the lighting initiatives in our plant – we take care to be good stewards of our environment.

In many cases, the logistics of the distribution puzzle is more expensive than the printing component of a project. In 2015 Kingery Printing's Director of Mailing Operations, over both plants, was appointed to the USPS Mailers' Technical Advisory Committee. Known as MTAC, this group serves as a venue for the USPS to share technical information with mailers and receive recommendations from mailers on matters concerning mail-related products and services. Established in 1965, MTAC has provided technical advice and feedback vital to the formation and implementation of many postal innovations such as the Zip Code, Zip+4, Move Update, postal certification programs, and the Intelligent Mail barcode. MTAC serves to the mutual benefit of the USPS and the participating organizations and offers unique insight into new mailing pilot programs and solution testing that is not available to the general mailing community. MTAC meets quarterly in Washington DC.

As printing continues to evolve, Kingery Printing Company continues to be the area's most informed, technically advanced, source for printing, binding, and mailing services.

The founding vision of continued investment in the latest technologies and superior customer service are preserved and built upon by its family Board of Directors which includes, left to right: Steven Kingery, Vice-President; Angela Helmuth, Secretary; John Kingery, Chairman; and Michael Kingery, President.

Want to learn more about Kingery Printing Co.?
Check out our website at **www.kingeryprinting.com**

Kingery Printing Company • 3012 S. Banker St. • Effingham, IL 62401



STRONG, SOLID, COMMUNITY BANKING

SINCE 1912

EFFINGHAM

210 E. FAYETTE
217-342-3200

STEWARDSON

217-682-3236



"That's My Bank!"

1st National Bank

www.fnbwaterloo.com



DIETERICH BANK

Live for Today.
Bank for Tomorrow.

Live for Today. Bank for Tomorrow.



(800) 699-9766 | DIETERICHBANK.COM



GRILLE

Inside the



Holiday Inn

Ph: (217) 540-7716



1301 Avenue of Mid America • Effingham, IL
holidayinn.com/effinghamil

BREAKFAST
MON – FRI 6 AM – 10 AM
SAT & SUN 7 AM – 2 PM

LUNCH 11 AM – 2 PM DAILY
OR
DINNER 5 PM – 10 PM DAILY

Some of our Featured Items

- Eggs Benedict
- English Muffins & Bagels
- German Chocolate Pancakes
- All American Skillet
- Chef Special Omelets
- Fresh Fruit

**Try our NEW
Menu Items!**

The bar is open daily
4 pm – 1 am with an
Appetizer Menu available
from 10 pm – 1 am
– Everyone Welcome –

Appetizers

- Buffalo Wings
- Quesadillas
- Sliders

Try our Lavosh, a traditional
cracker bread crust topped with
Havarti cheese served with pico
de gallo or tomatoes & pesto.

Some of our Menu Items

- Burgers
- Grilled Salmon BLT
- Caesar Salads
- House Salads
- Steaks
- Salmon
- Pizzas



image squared marketing
*The creative spark that fuels
your marketing campaigns—with
inspiration and style!*

217.690.7474

casey@imagesquaredmarketing.com

**We are your outsourced
marketing department.**

Imagine This! Marketing Group provides you Marketing Directors, Graphic Designers, Copywriters, Social Media Managers, Web Developers, Video Producers and more. You get the resources of our entire team for less than the cost of one full-time employee.

Let us Think, Create, & Do for you!



think



create



do

itmg!



creative



web



video



photo



social



strategy



results

imaginethis!
MARKETING GROUP



217.342.2661 | thinkcreatedo.com

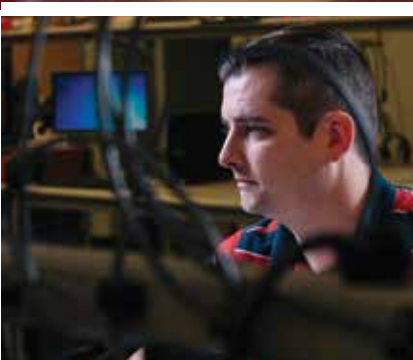


Visit THE MILL



- Browse our store for whole grain flours, cereals, pastas & mixes that are made in Effingham, IL
- Buy locally made crafts, food & gifts
- Take a cooking class with friends

THE MILL Retail Store & Education Center • Mon-Fri 9-5, Sat 9-3
1001 Ford Ave, Effingham, IL 62401 • 217.347.MILL (6455) • HodgsonMill.com



New Career Opportunities with Heartland Dental

Looking for a challenging career and personal growth? As we continue to grow, Heartland Dental Home Office has new career opportunities for open, positive and hardworking individuals. Join our growing company as we continue to support over 700 dental offices nationwide with our world-class administrative services.

We are looking for team members with backgrounds in:

- Information Technology
- Graphic Design
- Legal
- Marketing
- Management
- Talent Acquisition
- Accounting
- Web Development
- And Much More!

Apply Today! www.Heartland.com/HomeOffice
or **Call 217-540-5100**



Stay Connected
With Us



+



=

2FAST4U
PRODUCTIONS

lead creative K.L. CLEETON
call 217-663-3949
email KL@2FAST4UPRODUCTIONS.COM
visit WWW.2FAST4UPRODUCTIONS.COM

epic

33 years **PATTON** **PRINTING & GRAPHICS**

A Business Imaging Company

902 W. WABASH AVENUE • EFFINGHAM, ILLINOIS 62401

217.347.0220 • print@pattonprinting.com

www.pattonprinting.com

OVER

32 YEARS IN BUSINESS

- - SINCE 1983 - -

Professional Computer, Networking & Software Services



System Development Services, Inc.
313 Professional Park Ave, Effingham, IL 62401
(217) 347-5242 • www.sdscomputers.com

GOOD DESIGN IS GOOD BUSINESS



FLYERS



BUSINESS CARDS



LOGOS



BROCHURES



DIGITAL MEDIA



MAGAZINES

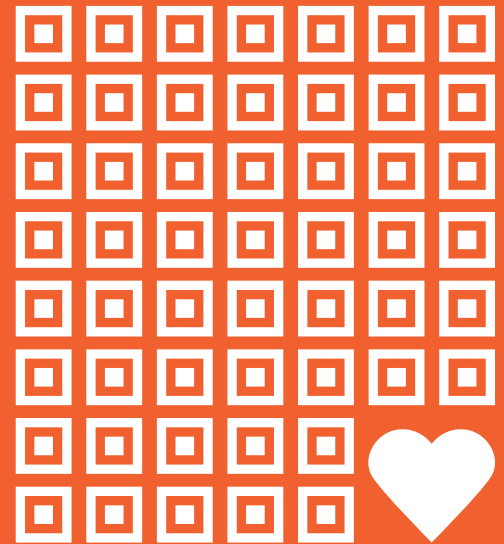
www.freshgraphicdesignstudio.com

fresh.
GRAPHIC DESIGN STUDIO

217.298.2013
305 Professional Park Ave. • Effingham



Midland
States Bank



Great strength. More heart.

midlandsb.com

Member FDIC



SBL Effingham Clinic

905 North Maple Ave. • Effingham, IL

- Allergy
- Audiology Services
- Lincolnland Hospice
- Laboratory Services
- Sleep Disorders Center

(217) 347-7077

(217) 540-6100
(Sleep Disorders Center)

1-877-796-5227
(Laboratory Services)

 **Sarah Bush
Lincoln**
Trusted Compassionate Care
www.sarahbush.org
   

2015 New Members

2Fast4u Productions
Advanced Veterinary Care, LLC
Ann Deters
Aving Rice LLC dba Jumpin' Jimmy's
Beck's Hybrids
Bev Soltwedel
Bluegill Marina
Bob Shelton
Brad Hastings
Busey Bank
Click Video Productions LLC
Cornerstone Travel
Days Inn
DMI - D. Martin Industries Inc.
Doppelt Creek Farm & Hunt Club

Ed Wolfe Construction, Inc.
Effingham County Republican Party
Effingham Regional Growth Alliance
Factory Connection
Favorite Things LLC
Foxy's Styles Salon & Spa
Fresh Graphic Design Studio
Guaranteed Rate, Inc.
IL Forno Restaurant
J&R Collision Centers
Lexington Inn & Suites
Lincoln FBFM Association
McHugh Hospitality Group, Inc.
McMahon Meats
National Rifle Association of America

Paul's Auto Repair
Quantum Vision Centers
Roy Schmidt Honda
Rush Truck Center - Effingham
Sugar N Spice & Everything Nice LLC
Sutter Disposal
The Car Company of Effingham, Inc.
The Sauced Up Smokers
Turnkey Computer Systems, Inc.
Viamedia
Whiskey Bend Entertainment
Zona's on the Lake

A-B

#1 Network
72VEST
AAIM Employers' Association
ADM Alliance Nutrition
Advanced Digital Solutions/Xerox Agent
Advanced Towing and Recovery LLC
AFLAC
AGE-Affordable Gas & Electric
Agracel, Inc.
Air Evac Lifeteam
Air Stamping Inc.
AKRA Builders, Inc.
Al's Tire Mart & Electronics
Allstate Insurance

Altamont CUSD #10 - August



Altamont News Banner
Altamont Veterinary Clinic
Ameren Illinois
America's Best Value Inn

America's Select Homes Inc.
American Cancer Society
American Legion Post 120
American Red Cross
Anatime Entertainment
Anderson's Jewelry
Andes HealthMart
Anthony Acres Resort, Inc.
ApexNetwork Physical Therapy
Arab Termite & Pest Control
Aramark Uniform Services
ARC Community Support Systems
ARCH Air Medical Service, Inc.
Arrow Pest Control, Inc.
Artisan Depot Inc.
Auctions/Realty by Schackmann
Auto Glass Unlimited
B & L Machine and Design
B and B Homes
B B & K Development
Bahrs Equipment, Inc.
Balda Dental Office
Bales Unlimited Inc.
Ballard Nature Center
Bandy's Medical Equipment
Barlow Lock & Security, Inc.
Barr Construction & Remodeling, Inc.
Baseball Card Connection
Bauer Funeral Home

Baymont Inn & Suites
Beccue Builders Inc.
Best Western
Better Business Bureau-Eastern
MO & Southern IL
Bierman Welding Inc.
Bill Nuxoll
BK Resources
Blessings in a Backpack
Blue Stingray
Bob's Discount Home Improvement
Bonutti Clinic
Boos Enterprises Inc.
Bray Title Services
Brookstone Estates/Suites
Browns Drug Store
Brumleve Industries, Inc.
Buffalo Wild Wings dba The Cekander Group
Buhnerkempe Plumbing & Heating Inc.
Burford Electric
Burkland's Greenhouse
Bushue Human Resources Inc.

**We are the Voice of the
Business Community**

Be A Chamber Volunteer!



2015 Chamber Member of the Month Recipients are noted in the directory with a picture and their company name in bold.

Camp New Hope
Camp Walter Scott
Campos Family Dental
Carle Physician Group
Carriage House Event Center
CASA of Effingham County
Casey's General Store
Catholic Charities
CCI RediMix
CEFS Economic Opportunity Corp.
Central Illinois Home Inspection Service Inc.
Central Illinois Oral Surgery
Century 21 - Realty Concepts
Charles Heuerman Trucking Co.
Charles Horin D.D.S.
Chuck's Satellite & Antenna
Citizens for Kyle McCarter
City of Effingham - November



Civil Design Inc.
Claude Coats
Clean The Uniform Company
CliftonLarsonAllen
Coldwell Banker/First Realty
Comfort Suites
Commercial Refrigeration of Central IL, Inc.
Community Blood Services of Illinois
Community Directories, Inc.
Compass Advisory Group

Consolidated Communications - December



Continental Mills
Cornerstone Wealth Management
COUNTRY Financial
Country Inn & Suites
Country Peddlers
Coventry Health Care
CQI Associates

Creative Designs
Credit Collection Partners
Cromwell Radio Group
Crossroads Bank
Crossroads Cancer Center
Crossroads Truck Equipment
Culture-A Frozen Yogurt Lounge, Inc.
Custom Family Homes Inc.
CW Motorsports



Are You Mobile?

Keep your Chamber in your pocket with MyChamberApp, where Chamber members and the public can find member businesses, local events, discounts and hot deals. Available to download for free on the iPhone, Android, and Blackberry.

D-E

Dale Carnegie Training/S.J. Grant & Assoc.
Dale Esker Construction
Dale Fitzpatrick
Dan Hecht Chevrolet-Toyota
Dan's Glass Inc.
Daniel J Clasby
Data Management Shredding
Deb's Catering Inc.
Delta Inn
Denny's
Designs Unlimited, Inc.
Detection Security Co., Inc.
Dieterich Bank
Dieterich Business Association
Dieterich Community Development Corporation
Dieterich Community Unit #30
Dimond Bros. Insurance Agency Inc.
Dirtbuster Carwash LLC
Doehring, Winders & Co. LLP - January



Donnewald Distributing Company

Donors Forum
Double D Sign Repair
Doug McCain's Bar-B-Q Sauce
Dr. James C Graham S.C.
Dr. Margaret Merry-Niebrugge, DMD
Dr. Ruben Boyajian
Dr. Ted Koester, D.M.D., P.C.
Draves Trim Tone 'N Tan/Archery
Drees Enterprises LLC
Drees Plumbing Inc.
Drs. Sehy & Jones, Optometrists
Duckett's Carpet Care
Dust & Son L.P.
Dust Electric
Dusty's Outdoor Media, LLC & Country Rhodes, Inc.
Eastern Illinois University
Edward Jones - Adam Butts
Edward Jones - Lynn Deters
Effingham & Teutopolis News Report
Effingham Ambulatory Surgery Center
Effingham Animal Health Center Inc. (E.A.H.C.)
Effingham Animal Rescue Sanctuary (EARS)
Effingham Area Crime Stoppers
Effingham Asphalt Co., Inc.
Effingham Auto Repair LLC
Effingham Builders Supply
Effingham Child Development Center
Effingham Country Club
Effingham County
Effingham County Committee on Aging

Effingham County Cultural Ctr and Museum Assoc.
Effingham County Farm Bureau
Effingham County Health Department
Effingham County Public Transportation
Effingham County Recycling/Sutter Sanitation
Effingham CUSD #40
Effingham Daily News
Effingham Elks Lodge #1016
Effingham Express Care
Effingham Homes
Effingham Knights of Columbus
Effingham Obstetrics & Gynecology Assoc.
Effingham Ophthalmology Associates
Effingham Performance Center
Effingham Post Office
Effingham Printing Company
Effingham Public Library
Effingham Railroad Company
Effingham Signs & Graphics
Effingham Surgical Associates, S.C.
Effingham Telecom Solutions Inc.
Effingham Tire & Auto Center Inc.
Effingham Travel Agency
Effingham Urology Associates, S.C.
Effingham Veterinary Clinic
Effingham Water Authority
EJ Water Cooperative, Inc.
Enterprise Dynamics Inc.
ESS Clean Inc.
Evergreen Nursing & Rehab, LLC
Express Employment Professionals

F-H

F.E. Moran Alarm & Monitoring
 Fairfield Inn & Suites
 Family Care Associates of Effingham S.C.
 Family Foot Care Center
 FARLEY Insurance & Investments
 Farm Credit Services of Illinois
 FARMWELD INC.
 Farnsworth Group Inc.
Fifth Third Bank - October



Fine Arts, County of Effingham
 Fire Equipment Service & Sales Inc.
 Firefly Grill Inc.
 First Mid-Illinois Bank And Trust
 First National Bank of Waterloo Effingham Bank
 Four Scoops, Inc. dba Dairy Queen
 Frank Kabbes
 Freedom Martial Arts dba Leaders for Life Martial Arts

Fresh Digs, Inc.
 Frisse & Brewster Law Offices
 Fujiyama Japanese Steak House
 Funneman Frontier Arms, LLC
Gabby Goat - June



Girl Scouts of Southern Illinois
 Glik's
 Global Technical Systems Inc.
 Goeckner Accounting & Financial Services, Inc.
 Goeckner Bros. Inc.
 Grandma's Twice is Nice
 Griffith Trucking Inc. dba Broadway Express
 Grunloh Building Inc
 Grunloh Construction, Inc.
 H & R Block
 H and W Service Center Inc.
 Hampton Inn & Suites

Hawickhorst and Associates
 Heartland Beef dba Arby's
 Heartland Dental
 Heartland Family Dental Care
 Heartland Health Foods
 Heartland Human Services
 Heartland Landscaping Inc.
 Heather and Marty - vocal/guitar duo
 Heidanes Hidden Timbers
 Henry J. Poterucha, M.D.
 Henry Merz
 Heritage Builders of Effingham, Inc.
 Hetzels Overland Transport Inc.
 hibu Inc.
 Hitachi Metals Automotive Components USA, LLC
 Hodgson Mill, Inc.
 Hoelscher Concrete Construction Inc.
 Holiday Inn
 Holland Energy, LLC
 Holli's Flour Shop
 Home Accents Custom Picture Framing
 Homebuilders Plus, Inc.
 Hoosier Hospitality Consulting LLC
 HSHS St. Anthony's Memorial Hospital

I-K

I.C. Enterprises, Inc.
 image squared marketing, inc.
 Imagine This Marketing Group
 Innovative Staff Solutions
 Interstate Batteries of South Central IL
 Irwin Telescopic Seating Company
 It's Almost Home

J & J Ventures Gaming LLC - March



J.B. Esker & Sons, Inc.
 JA FA Photo
 JAD Imports Inc. dba Stadium Cinemas
 James R. Gartner
 Jansen Cable Construction, Inc.
 Jansen Computers
 Jansen's Auto Sales
 Jansen's Heating/Air
 Jedco Sales, Inc.
 Jimmy John's
 Job Match, Inc.
 Joe Sippers Café
 Joe's Pizza & Pasta
 John Boos & Co.
 John Kirby & Assoc.
 John Kroeger, D.M.D.
 John Lewis Concrete Construction Inc.

John M Johnson
 Johnson Funeral Home
 Journal Gazette & Times Courier/Herald & Review
 K & F Storage
 K & M Floral Shoppe, Inc.
 K. Wohltman Construction, Inc.
 KC Investment LLC dba Camp Lakewood Campground
 KCH Mechanical Inc.
 Keller Convention Center
 Kemper CPA Group
 Ken & Norma Lansing
 Kiefer Landscaping
 Kingery Printing Company
 Kirby Risk Electrical Supply Co.
 Koerner Distributor Inc.
 KTD Computer

L

L.J. Swingler & Sons Inc.
 Laboratory Corporation of America (LabCorp)
 Lake Land College
 Lake Pointe Apartments
 Lake Sara Area Water Cooperative, Inc.
 Lake Sara Marina
 Lakeland Rehabilitation & Health Care Center, LLC
 Lakeside Services
 Land of Lincoln Credit Union

Land of Lincoln Goodwill Industries
 LaPetite Boutique & Fine Decor Consignment Store
 Larry O'Dell
 Lavender Ridge: Dignified Memory Care
 LeFevre Oldfield Myers Apke and Payne Law Group, Ltd.
 Legacy Harley-Davidson
 Leisure Times Pools & Spas Ltd.
 Lidy Graphics
 Lifeline Christian Books & Gifts

Lilley Land Improvement
 Linda L. Mitchell
 Linders Limited LLC/McDonald's
 Lions Liquors
 Local Workforce Investment Area 23
 Longhorn Buildings LLC
 Loudon Machine, Inc.
 Lustig Custom Cabinet Co.

If you would like information on how to become a Chamber member, contact the Chamber at (217) 342-4147.

Mansfield's U-Stor-It
 Martin's IGA
 Marxman Excavating
 Mary Kay Cosmetics
 Maurices
 Maxedon Landscaping
 Mayhood Properties L.L.C.
 MBI Construction
 McDevitt, Osteen, Chojnicki & Deters, LLC
 Mechanovent Corp. (A New York Blower Co.)
 Mederi Caretenders Home Health
 Mediacom Business
 Merz Heating & Air Conditioning Inc.
 Mette's Cabinet Corner Inc.

Meyer Funeral Home
 Meyer Oil Company
 Mid America Motorworks
 Mid Illinois Big Brothers Big Sisters Effingham County Program
 Mid Illinois Equipment Sales
 Mid-Illinois Concrete, Inc.
 Mid-Illinois Medical Care Associates, LLC
 Midland States Bank
 Midwest Office
 Midwest Toppers & Pickup Accessories Inc.
 Muhlbacher Insurance Agency, Inc.
 Milano & Grunloh Engineers, LLC
 Morgan Distributing Inc.

NAPA Auto Parts
 National Bank At Effingham
 National Trail Development LLC
 New Health Chiropractic
 New Hope Church
 Niebrugge Lumber Company, Inc.
 Niebrugge Plumbing & Electric
 Niebrugge's Furniture
 Niemerg's Steak House
 Northside Ford-Lincoln
 Nova Solutions, Inc.
 NOVATEK Medical Rental Group Inc.
 Nuxoll Food Center

O-R

Office of Congressman John Shimkus
 One Hope United
 Oneighty
 Opportunities For Access
 Orr Law, LLC
 Pagel Silver Dollar Lanes
 Pals Electric Inc.
 Pam Crisman
 Party Worx
 Pat Copple
 Patterson Companies Inc.
 Patton Printing & Graphics
 Peerless of America, Inc
 Pepsi Mid America
 Personal Finance Company

Pet Feed Store N' More Inc.
 Phelps Map Service
 Physician's Choice Wellness LLC
 Pizza Man of Effingham Inc.
 Popeyes Louisiana Kitchen
 Power Therapeutic Massage
 Premier Broadcasting
 Prime Sole
 Probst Auto Body, Inc.
 Promark Advertising Inc.
 Prudential Financial
 PURE architecture studio, llc
 Pyramid Marble & Granite
 Quad Graphics
 R & R Powersports, Inc.

R.C. Buildings, Inc.
 RE/MAX Key Advantage
 Rice Sullivan
 Rides Mass Transit District
 Riley Business Services
 Ring Financial
 Robert Lewis
 Roepke Overhead Door Co.
 Roger's Home Appliance-Direct Maytag
 Roses from Linda
 Rotary Club of Effingham
 RPM - Reliable Professional Maintenance Inc.
 Rural King
 Russ Braunecker Cadillac, Buick, GMC

S

Sacred Heart Parish
 Safe Haven Hospice
 Sandra Walk, Architect
 Sandschafer Electric Inc.
 Sanitation Service, Inc
 Sarah Bush Lincoln
 Sbarro's
 Schaefer Appraisal Service
 Scheid Diesel Service Company, Inc.
 Schmid Auction & Realty
 Schultheis Garage and Classics, LLC
 Schultz Investment Company
 Schumacher Orthodontics
 SDS Computers (System Development Services, Inc.)
 Seagle Tax and Financial Services, Inc.
 Sears, Roehll Family Corp.
 Security Alarm Corporation
 Security Finance
 Sentinel Pest Control
 ServiceKing Collision Repair Centers
 Servpro
 Sherwin Williams Company
 Sherwin Williams Paint
 Shoe Sensation

Siemer Milling Company
 Siemer, Austin, & Fuhr
 Siemerworks-Crossfit Effingham
 Smith Moore

Smith Realty Group of Effingham, LLC - May



South Central FS - February



Southeastern Illinois Community Foundation
 Southern Illinois Hand Center
 Southtown Car Wash
 Spectrum Screen Graphics
 Sporty's Beverage Connection, LLC
 Springfield Clinic Effingham
 Springleaf Financial Services
 St. Anthony Church
 Stanfield Chiropractic
 STANG Arts Studio & Gallery Inc.
 State Representative David Reis
 State Representative John Cavaletto
 Steffen Heating/Air Conditioning Inc.
 Stevens Industries, Inc
 Stillwater Enterprises, Inc.
 Support Products Inc
 Susan Hanfland
 SWAN
 Sylvan Learning Center

**Support Chamber Members
 SHOP LOCAL**

T

TAP Business Systems
Taylor Law Offices, P.C.
Teutopolis Auto Repair Inc.
Teutopolis Auto Sales Inc./Webster Tire and Auto Service
Teutopolis Community For Progress
TGI Friday's
The AutoMall of Effingham
The Center For Jaw and Facial Surgery, P.C.
The Equity
The Glenwood Assisted Living
The Healing Jukebox

The Midway
The Mill
The Thomas Shop
The Villas of Holly Brook
The Wellness Loft
The Zone 24 Hour Fitness
Thoele Plumbing Inc.
Three Chicks and a Stage
Tick Tock Energy, Inc.
Timber Ridge Antiques & Clock Repair
Tingley Insurance Agency, Inc.

TNT Recycling
Tod Lancaster
Tom Henderson - State Farm Insurance
Total Quality Warehouse
Totten Law Office LLC
Travel Centers of America
Trigg's Flooring
TriPower Towing and Recovery/Tri Parts Truck Salvage
Tucker Accounting Service Inc.
Tuscan Hills Winery
Tytia Habing Photography

U-Z

Unique Personnel Consultants
United Way of Effingham County
University of Illinois Extension-Effingham Co.
Utz and Associates Architects P.C.
Van Dyke Culvert Sales & Backhoe Service
Vantage Outsourcing
Versatech LLC
Village Apartments of Effingham I & II
Village of Dieterich
Village of Strasburg
Village of Teutopolis
Village Wine - April



Visionary Eyewear, LLC
W S Broom & Co. Inc.
W.E.T. Inc.
Wabash Tire and Auto

Wal-Mart #0936
Walgreens
Walks Auto Body
Walnut Street Weddings
Washington Savings Bank
Watts Copy Systems
WCIA
Weber Optiks
Weber's Clothing & Jewelry
Weis Insurance Agency, LLC
Wells Fargo Advisors, LLC.
Wente Plumbing & Fire Protection
West & Company, L.L.C. - September



Wiedman Cleaners, Inc.
Willowbrook of Effingham

Wireless Stores Inc.
Witt's Smokehouse and Deli-Expansion of "Unique"
Country Catering
Woodlawn Cemetery/Effingham Monument
Woods Advisors, LLC
Wortman Printing Company
Wright's Furniture & Flooring
WTWO-TV-Illinois Bureau Office
Y Yard Auto and Truck Inc. - July



THANK YOU for your continued support of the Chamber!

Join Our Winning Team in 2016!

- Access to valuable business resources and tools
- Chamber volunteer opportunities provide valuable leadership skills
- Credibility & Visibility
- Great marketing opportunities
- Advocate for community support & growth



Get Noticed. Get Exposure. Get Business.

NEW Chamber Magazine in 2016 - Online and in Print!

Message Sign - Seen by over 20,000 vehicles daily

Stay Informed - www.EffinghamCountyChamber.com

Join our **Email Marketing** List! Reach over 1400 area decision makers with your business message through our E-Blast Program. Call Becky Brown at (217) 342-4147 for more information.



NEW Website!

Calendar of Events 2016

JANUARY

Jan. 8 First Friday Luncheon
Jan. 20 Natural Gas Market Update
Jan. 21 Business After Hours - Stanfield Chiropractic

FEBRUARY

Feb. 3 CEO Experience
Feb. 5 First Friday Luncheon
Feb. 11 Business After Hours
- Southern Illinois Hand Center
Feb. 25 Business After Hours - Stevens Industries

MARCH

Mar. 4 First Friday Luncheon
Mar. 8 YBNext Annual Meeting
Mar. 10 Business After Hours
- Effingham Surgical Associates
Mar. 17 Business After Hours - Legacy Harley-Davidson
Mar. 31 Business After Hours
- Effingham Regional Growth Alliance

APRIL

Apr. 1 Employee Appreciation Luncheon
Apr. 7 Community Celebration of Excellence Breakfast
Apr. 16-24 China Trip
Apr. 21 Business After Hours - Patton Printing & Graphics
Apr. 22 Radio Day with 95.7 WCRC
Apr. 27 CEO Trade Show
Apr. 28 Converge - Business After Hours

MAY

May 6 First Friday Luncheon
May 12 Business After Hours
- Pet Wellness Center of Southern Illinois
May 13 Legislative Summit
May 20 Chamber Golf Outing
May 26 Business After Hours - Dieterich Bank

JUNE

June 3 Scholarship Recognition Luncheon
June 8 Effingham County Career Fair
June 9 Business After Hours - BALDA Dental
June 23 Business After Hours
- Tick Tock Energy/Pals Electric

JULY

July 8 First Friday Luncheon
July 22-23 EffingHAM - JAM
July 28 Business After Hours - Hodgson Mill - THE MILL

AUGUST

Aug. 3 Kickoff to Education Breakfast
Aug. 5 First Friday Luncheon

SEPTEMBER

Sept. 2 First Friday Luncheon
Sept. 8 Chamber After Hours
Sept. 22 Business After Hours - Cobblestone Hotel
Sept. 23 Chamber Fall Social
Sept. 27 Top Leaders Under 40 Awards Dinner

OCTOBER

Oct. 6 Effingham County Manufacturing Day, KCHall
Oct. 7 First Friday Luncheon
Oct. 7-17 European River Cruise
Oct. 13 Business After Hours
- Schultheis Garage and Classics, LLC
Oct. 13 Radio Day with 97.9 XFM

NOVEMBER

Nov. 3 Business After Hours - Village Wine & Gift Shop
Nov. 4 First Friday Luncheon
Nov. 17 Business After Hours - Burkland's Florist & Gifts
Nov. 26 Hometown Christmas/Small Business Saturday

DECEMBER

Dec. 2 First Friday Luncheon

Over 130 Events attended by over 9,000 people in 2015!

If you would like to host or sponsor an event this year, contact the Chamber!



Scan this code with your smartphone or visit us online at www.effinghamcountychamber.com for up-to-date calendar information.

Our Partners in Business & Community Growth



A special THANK YOU to everyone that helps us do our job!

Becky Brown Membership Manager
Norma Lansing President & CEO
Leah Orr Administrative Assistant
Grace Zeller Intern

Effingham County Chamber of Commerce

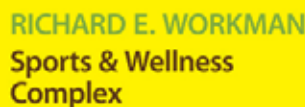
903 North Keller Drive • P.O. Box 643 • Effingham, IL 62401
217.342.4147 • EffinghamCountyChamber.com

The Chamber 360 is published by the Effingham County Chamber of Commerce. Every effort is made to ensure the accuracy of the information in this publication. The Chamber can not guarantee the correctness of all information available to them and assumes no liability arising from errors and omissions. © Copyright 2016 Effingham County Chamber of Commerce. All rights reserved. Reproducing any part of this book by photocopying, by electronic storage and retrieval or by any other means is prohibited.



Improving Our Community!

For 87 years the J&J Ventures companies have strived to improve the economic vitality and quality of life in the communities where our customer and employees work and live by investing in the communities, encouraging employee volunteerism, and building mutually beneficial relationships.



Power Up Your Home and Business with Consolidated Communications.

Up to Gigabit speeds now available with CCI Fiber+!

In today's multi-device world, you need powerful technology services to keep running strong. For your home and your business, you can trust the strength of Consolidated Communications —your local provider for more than 100 years. Our CCI Fiber+ network delivers the power you need, and we deliver the care you deserve.

POWER UP YOUR HOME

- + High-Speed Internet
- + Digital TV
- + Phone
- + Home Automation
- + Home Security

POWER UP YOUR BUSINESS

- + Data & Internet
- + Voice
- + Cloud Services
- + Managed & Hosted Services
- + IT Services

844.YOUR.CCI
consolidated.com

* Services not available in all areas.

