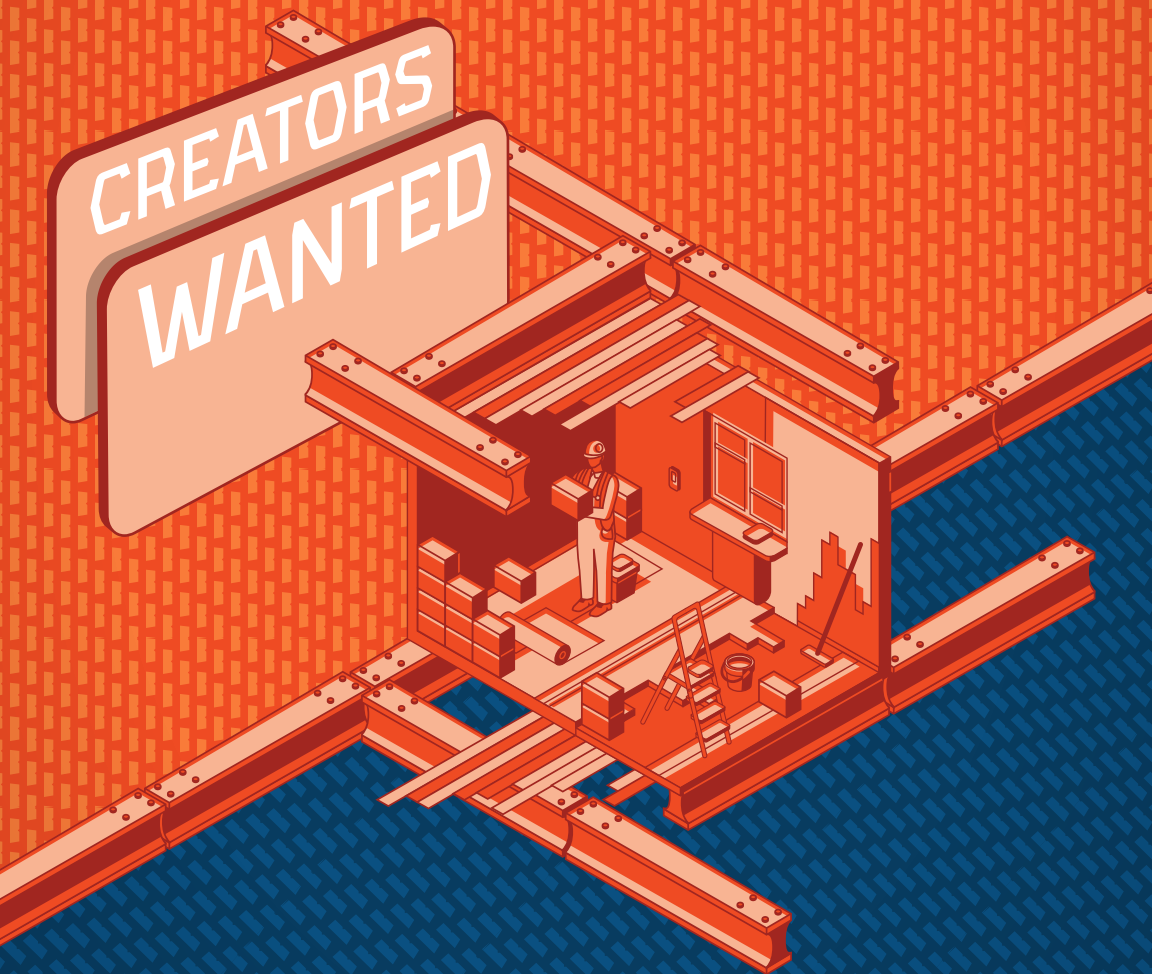


# NETWORK

*Effingham County Chamber of Commerce*

SEPTEMBER 2019



**EFFINGHAM COUNTY**  
**CHAMBER OF COMMERCE**  
*Engaging Business and Community*

# better businesses deserve better websites.

Does your website truly tell your story and engage your audience? Our brand-first approach to design and development leads to websites that not only inspire & engage, but elevate your brand in today's digital landscape.

are you ready for a better website?

**let's talk.**

web design & development • comprehensive SEO  
digital advertising • social media advertising • content marketing



**imaginethis!**  
MARKETING GROUP

better marketing solutions for better business.

217.342.2661  
thinkcreatedo.com



## FORM A UNIQUE PARTNERSHIP WITH THE LAKE LAND COLLEGE CENTER FOR BUSINESS & INDUSTRY



### CUSTOMIZED SERVICES IN:

BUSINESS SERVICES • MANUFACTURING SKILLS LAB •  
COMMUNITY LEARNING • COMMERCIAL TRUCK DRIVER TRAINING

### BENEFITS OF INVESTING IN TRAINING

**24%  
HIGHER**  
\$   
**PROFIT  
MARGINS**  
than those who spend less on training

### CONTACT US!

217-238-8260  
lakelandcollege.edu/cbi

**LAKE LAND**  
COLLEGE

# LETTER FROM THE PRESIDENT



*Chamber of the Year recognition by ACCE President  
Sheree Anne Kelly*

When we ask businesses why they are Chamber members, there's a pretty common thread in the responses we receive:

- Making connections with other business people, connections that would likely not happen without the Chamber.
- Creating awareness about my business and the products and services it provides.
- Participation in the overall growth and development of Effingham County.

Satisfied Chamber members are among our greatest sales tools. While we have a great Membership Director in Becky Brown, we need all of our members to be sales advocates for the Chamber. And, we make it easy for you to help us grow the Chamber.

With our Member Referral Program, simply identify a business, vendor or acquaintance that you feel would benefit from Chamber membership, provide the name

to Becky and she'll do the rest! (Becky can be reached at [bbrown@effinghamcountychamber.com](mailto:bbrown@effinghamcountychamber.com)). When the new member is announced in the Network magazine, your name will be included in the information. That's great free publicity for your business!

Check out Page 3 as a reminder of all the great benefits available to Chamber members. Then go out and encourage others to join you in building a better Effingham County through the Chamber.

**In This Issue:** Network focuses on Effingham County Manufacturing Day and the important role manufacturing plays in the local economy. Check out our special section to learn more about our local industries and employment opportunities that exist in a broad range of categories – from production and assembly to computer technicians, human resource and sales professionals – manufacturing supplies 17% of all jobs in Effingham County.

You'll also learn about a December workshop on the new recreational marijuana laws, a county-wide visioning project and a new Shared Workspace opening soon in downtown Effingham.

The Chamber is actively involved in all of these initiatives to help grow Effingham County and your business.

**Norma Lansing, President & CEO**  
[nlansing@effinghamcountychamber.com](mailto:nlansing@effinghamcountychamber.com)  
217-342-4147

## THANK YOU TO OUR CAPITAL INVESTORS:



Gold Level Investor



Silver Level Investor



# LEISURE TIMES FAMILY FUN

217.347.0777 • LEISURETIMESFUN.COM



## Sundance® Spas

Experience the Sundance® Difference

**FIREPLACES • PATIO • GRILLS • BILLIARDS**

The ART of fine Cabinetry.



## LUSTIG CUSTOM CABINETS

921 E. Fayette • Effingham

217-342-6210

lustigcabinets.com



www.crossroadsbank.com

## Crossroads Bank

Locally Owned and Operated

2000 S. Banker St. • 806 N. Keller Dr.  
Effingham, IL 62401 • Bank NMLS #401683  
Ph: 217-347-7751 • Toll Free: 800-305-7751



**Lisa Wilson**, Mortgage Loan Officer

lwilson@crossroadsbank.com

NMLS #1809787



Like us on Facebook!

*See me for your home loan needs!*



# REASONS TO INVEST IN YOUR CHAMBER



[www.effinghamcountychamber.com](http://www.effinghamcountychamber.com)

# WAYS TO MAXIMIZE YOUR MEMBERSHIP

- Display your Membership Plaque
- Review and enhance your online business Listing

- Follow the Chamber on Social Media
- Read the Monday e-updates, Network News letter and Chamber 360 Magazine

- Get additional company representatives connected.
- Explore the Chamber website

- Boost your visibility by posting a Hot Deal, Available Position, or Calendar Event on the Chamber Website.

**Include the Chamber in your marketing strategy**

**ADVERTISE** in the Chamber publications

**SPONSOR** and attend Chamber Events

**OBTAIN** mailing labels and/or utilize our bulk mailing permit for your direct mail marketing.

For assistance in utilizing your membership to the fullest, contact Becky Brown, Membership Director at [bbrown@effinghamcountychamber.com](mailto:bbrown@effinghamcountychamber.com)

903 N. Keller Dr., Effingham, IL 62401

November 6, 2019  
9:00am-12:30pm

Hampton Inn & Suites  
1305 N. Keller Dr.  
Effingham. IL

### What is Diversity and Inclusion?

Diversity is the mixture of individuals in society - generations, personalities, race, gender, to name a few. Inclusion is allowing that mixture to exist and work well together. Diversity recognizes that everyone is different. Inclusion is involvement and empowerment, where the inherent worth and dignity of all people are recognized. Elaine Hand of Innerview Inc., will cover the ways to shift your perspective, educate employees, challenge stereotypes and much more!



Nothing will change overnight but this workshop will provide information, guidance, and thought processes to help you work with your staff on this ever-evolving topic. We need to start talking about it - by educating and having open yet difficult conversations.

Members: \$249  
Non-Members: \$299

Save \$50 if you register by Oct. 28, 2019 and be sure to mention if you are an ECCC member!

100 ILLINOIS  
1919-2019 CHAMBER

Contact: Kirsten Constant, Illinois Chamber of Commerce  
(217)552-5512 or [kconstant@ilchamber.org](mailto:kconstant@ilchamber.org)

# 9 am • Saturday • October 12

2019



**\$25 Registration Fee**  
**Includes a shirt and medal.**

*Proceeds support  
SBL Regional Cancer Center.*

Register at [www.sarahbush.org](http://www.sarahbush.org)

 Sarah Bush Lincoln

## RECREATIONAL MARIJUANA SEMINAR

Illinois will soon become the 11th state to permit recreational cannabis. Beginning January 1, 2020, the Cannabis Regulation and Tax Act ("Act"), will allow adults (21+) to possess and consume cannabis. The Act expressly permits employers to adopt and enforce "reasonable" and nondiscriminatory zero tolerance and drug free workplace policies, including policies on drug testing, smoking, consumption, storage, and use of cannabis in the workplace or while on-call.

The Act's language indicates that employers may not be allowed to take adverse action against an applicant or employee for marijuana usage outside the workplace. In particular, the Act amends the Illinois Right to Privacy in the Workplace Act ("Right to Privacy Act"), which prohibits employers from restricting employees from using legal products outside of work. Specifically, the Right to Privacy Act is amended to provide that "lawful products" means products that are legal under state law, indicating that recreational and medical marijuana are legal

products that must be treated like alcohol and tobacco. Employers may not discriminate against an employee or applicant who lawfully uses cannabis (recreationally or medically) off-premises during nonworking and non-call hours.

On December, 12, 2019, from 8:30-12:00 the Labor & Employment Attorneys of Smith Amundsen LLC, will be conducting a seminar to carefully examine the new law and talk through the statutory changes impacting Illinois employers. The discussion will emphasize What Employers Should Do to Diminish Legal Risks and Protect their Workforce. Policy, practice and training will be examined closely. Fees are \$249. Save \$50 by registering before DecRegister at [www.ilchamber.org](http://www.ilchamber.org). Please be sure to mention if you are a member of The Chamber.

**When:** Thurs., December 12 • 8:30 a.m. – 12:00 p.m.

**Where:** Hampton Inn & Suites, CEUs available.

**Cost:** \$249/person. Registration info available at [ilchamber.org](http://ilchamber.org)



# The Glenwood

## Assisted Living

*Where the Only Things You  
Leave Behind Are Worries!*

14061 E. 1600th Ave. | Effingham  
Corner of N. 4th & Rickelman

**217-347-8880**

[www.theglenwoodcommunities.com](http://www.theglenwoodcommunities.com)



# Brücke Financial, Inc.

111 E. Main • Teutopolis, IL



Richard Hawickhorst



Andrew Hawickhorst



Luke Doedtmann

217-857-3912 [www.bruckefinancial.us](http://www.bruckefinancial.us)

Need gift ideas they will love?

## WE HAVE CUTTING BOARDS FOR EVERY OCCASION!

- ✓ Holiday Gifts
- ✓ Corporate Events
- ✓ Employee Appreciation
- ✓ Retirement Parties
- ✓ Wedding Gifts
- ✓ Much More!

Discount  
Available On  
Large Order  
Quantities!

Personalize Your Gift With  
Custom Laser Engraving!



Contact us for more gift ideas!

- Gift Packs
- Cutting Boards
- Butcher Blocks
- Much more!

**Boos**<sup>®</sup>  
**lockS**

JOHN BOOS FACTORY  
**SHOWROOM  
& OUTLET**

1703 AVENUE OF MID AMERICA  
EFFINGHAM, IL 62401 • (217) 347-7790

**VISIT US TODAY!**

MON-FRI: 8AM-6PM • SAT: 8AM-4PM

**SHOP ONLINE 24/7!**

[SHOP.BUTCHERBLOCKSPECIALIST.COM](http://SHOP.BUTCHERBLOCKSPECIALIST.COM)



## THE FUTURE OF PET FOOD IS HERE

*An industry-defining facility in Effingham*

### ADM Pet Nutrition Is Leading The Way In Premixes and Blends.

Innovation is happening right here in Effingham, with ADM's state-of-the-art premix facility. It is yet more proof of ADM's dedication to continually committing more expertise and resources for the future of custom premixes and blends along with raising the standards in sourcing and safety.

[animalnutrition@adm.com](mailto:animalnutrition@adm.com) | 877-236-2460 | [ADMAAnimalNutrition.com/Pet](http://ADMAAnimalNutrition.com/Pet)



WHERE *Innovation*  
AND *Collaboration* MEET



## NEW SHARED WORKSPACE IN DOWNTOWN EFFINGHAM

The Effingham Regional Incubator Network will be opening **AXIS @ 109 West**, Effingham's first shared work-space. Located at 109 W. Jefferson, **AXIS** was made possible by partnership grants from the City of Effingham and Effingham Regional Growth Alliance.

A shared work-space is a flexible office solution for a range of business professionals. Utilized by remote workers, freelancers, entrepreneurs, graduate students, and working parents, shared work spaces are the fastest growing sector of business office space in the nation.

**AXIS @ 109 West** will provide a range of open office settings for working professionals. **AXIS** members will have access to traditional table top space, stand-up work areas, lounge seating, a privacy booth, conference room and other amenities. The **AXIS** space also includes individual cubicles for enhanced individualized space.

Along with the City of Effingham and The Alliance, **AXIS** is made possible through a public-private

partnership with Gehl and Tara Higgs, owners of the building. In addition, several businesses and individuals have stepped up with contributions to make the newest office innovation a reality.

The opening of **AXIS @ 109 West** is slated for mid to late October. Additional information on **AXIS**, please contact Norma Lansing at the Chamber, [nlansing@effinghamcountychamber.com](mailto:nlansing@effinghamcountychamber.com), or by phone at 217.342.4147.



### Brunch, Brainstorming, and Business Services

Order the entrée. Open the laptop.  
Share the ideas. Inspire. You can trust  
our team to have your back so you  
can keep moving forward.

Data Networking | Voice & VoIP | Managed & IT Services  
Cloud Services | Security Services

Let's get down to business.

844.968.7224 | [consolidated.com](http://consolidated.com)



**Consolidated**  
communications

CONNECTING YOU BETTER

# MADE

IN EFFINGHAM COUNTY



If you have spent any time viewing programming on the Food Network, you've probably noticed the cutting boards branded with the John Boos logo, used by professional chefs like Rachel Ray, Emeril and Bobby Flay. Perhaps you have shopped at Kohl's, Starbucks, JCPenney or Target and noticed laminated wood products manufactured by Steven's Industries or maybe you watched as the US took home the World Cup while spectators viewed the excitement from the bleachers made by Altamont's own Irwin Telescopic. These are just a few of the products that are actually manufactured right here in our backyard from the hard work, skills and dedication of the people in our very own community.

Manufacturing made its debut in this area as far back as the late 1800's with the establishment of companies such as The Altamont News Banner, Siemer Milling and John Boos. Today more than 70 companies



in manufacturing and distribution have opened their doors, producing products that reach local, national and even international markets.

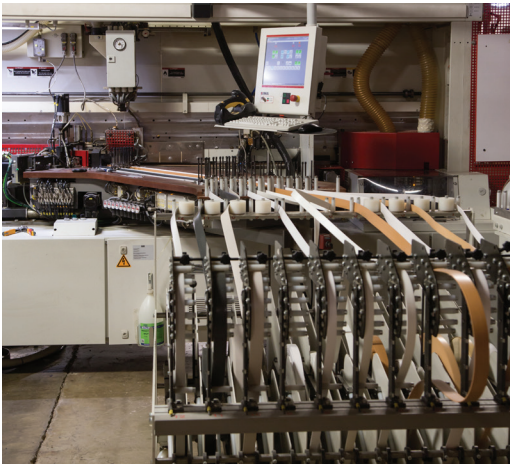
This area offers manufacturing companies multiple benefits for maintaining their company here. Coast to coast access via rail and highway provides transportation advantages and reduced delivery costs. These area characteristics blended with the available workforce, the support of the local programs to encourage that workforce, will all help to ensure the continued growth and sustainability of this important area industry.

This sustained growth of the industry is attributable in part to the skilled employees working in these companies. Would you believe that approximately



## EFFINGHAM COUNTY MANUFACTURERS & DISTRIBUTORS

The Altamont News Banner.....	1881	Effingham Regrinding, Inc.....	1943	Kingery Printing Company.....	1968
Siemer Milling Company.....	1882	South Central FS.....	1944	#1 Network Inc.....	1974
John Boos & Co.....	1887	ADM Grain Company.....	1946	Mid America Motorworks.....	1974
Brumleve Industries.....	1904	Quad Graphics.....	1947	Mid-Illinois Concrete.....	1977
Peerless of America II, Inc.....	1912	Effingham Asphalt.....	1953	SIM Products.....	1977
The Equity.....	1919	Willenborg Hardwood		Three Z Printing.....	1978
Effingham Printing Company.....	1920	Industries.....	1955	Farmweld Inc.....	1979
Lustig Custom Cabinets.....	1925	Stevens Industries.....	1956	Bierman Welding.....	1980
Merz Hearing and		Air Stamping Technology		ADM Alliance Nutrition.....	1982
Air Conditioning.....	1935	Integrators, Inc.....	1957	Loudon Machine Inc.....	1982
Beck's Hybrids.....	1937	Effingham Automotive		Patton Printing.....	1982
Fabweld Designs.....	1941	Warehouse, Inc.....	1960	Koerner Distributor, Inc.....	1982



17% of people working in Effingham County, are employed by manufacturing and distribution companies? These employees fill a wide variety of capacities in the industry, drawing on multiple skills, trades and specializations.

Manufacturing today relies on skilled trades such as electricians, mechanics, machinists, welders and maintenance technicians and technological advances have ushered in more and more automation which provides employment for mechanical and computer



## DID YOU KNOW?

*Products and parts made in Effingham County circle the world!*

- John Boos Co. manufactures cutting boards used by famous chefs on the Food Network such as Rachel Ray and Bobby Flay, as well as stainless kitchen equipment for commercial restaurants across the Country.
- Irwin Telescopic manufactured the seating in the US Bank Stadium, Minneapolis, Carnegie Hall in New York, and the Royal Arena in Copenhagen among many others.
- Peerless of America II, Inc. manufactures parts for four commercial jet engines including the Boeing 787 Dreamliner
- Siemer Milling Company flours are found in some of your favorite foods including Kentucky Fried Chicken's white gravy, Denny's Pancakes, Nestle Cookie Dough, McDonalds Biscuits, Long John Silver's Coatings, Duncan Hines, Red Lobster Retail Cheese Biscuits and Rold Gold Pretzels.
- Waupaca Foundry supplies automotive components to Ford, Chrysler, General Motors, BMW, Mazda, Nissan, Subaru, Mitsubishi and Honda.
- Nova Desks which are used all over in schools, colleges, and universities. They also manufacture technology desks for classrooms and offices that feature visual display options such as the trademarked "Trolley Lift."
- Quad Graphics creates consumer magazines, special interest publications, including catalogs, retail inserts, circulars and direct mail to name a few. They are also highly integrated with digital, mobile and online media to get the right message to the right people.
- Kingery Printing Company uses soy ink its climate controlled green facility. They have printing presses, bindery equipment and more. Tourism magazines and brochures, recreational magazines and catalogs are just a few of the products produced.

## EFFINGHAM COUNTY MANUFACTURERS & DISTRIBUTORS

Irwin Telescopic	Wortman Printing Company.....	1990	Holland Energy.....	2001
Seating Company .....	Pepsi Mid America .....	1990	BK Resources.....	2001
Support Products Inc.....	Joint Active Systems.....	1991	The New York Blower Company	2002
Adworks .....	R&G Machine Shop .....	1991	Ideal Machine, Inc.....	2006
Higgs Welding .....	Heartland Hardwoods, Inc.....	1992	ADM Animal Nutrition.....	2006
Ludwig Medical, Inc.....	Pyramid Marble & Granite.....	1992	Palamides USA Inc.....	2007
Sherwin Williams.....	Patterson Companies.....	1993	Versatech, LLC.....	2008
B&L Machine and Design.....	Candle Art .....	1995	Vogel Manufacturing Co., Inc.....	2008
K&W Auto Electric .....	Waupaca Foundry.....	1995	J. Chester Amplification.....	2012
Prince Inc.....	Kirby Risk Supply.....	1997	SRMD Solutions.....	2013
Nova Solutions.....	Novatek Medical .....	1997	Continental Mills.....	2014
Bonutti Technologies .....	Advanced Powder Technology.....	1998	Prairie Land Building Systems .....	2019



engineers, operators, software developers and maintenance personnel just to name a few. Other professional roles in human resources and other specialized administrative departments, product development and marketing are also available within the manufacturing realm.

The opportunities in this industry are vast and are constantly growing. This growth and the types of jobs available within our County enriches our local market and helps to keep young people here to start their careers. The continued growth and progress of these industries supports the retention of the local population which means more revenue for our overall local economy.

There are multiple programs available to help foster the continued infusion of employees into these local manufacturing and distribution firms. At the high school level, are Effingham High School's Manufacturing Skills program, Manufacturing Class, CAD class and a Production Metal course that also draws students from other county schools.

St. Anthony offers "MobileMakers" a coding curriculum, which exposes students to the lightning-fast growing industry involved in facilitating communication between people and machines. Altamont, Beecher City and other county high schools offer production technology curriculum within their Career and Educational Training Programs.

John Boos & Company is among area manufacturers who have started making connections with students through their internship program exposing students to the various jobs throughout their different facilities.

The planned Effingham Regional Career Academy will be a powerful resource for employers and

educators to aid in the development of students in high school and beyond to pursue regional careers in the industry. Lake Land College's Center

for Business and Industry offers programs designed to prepare students to enter the work force with their 9-week programs in Electronics Engineering Technology, Building Construction Technology, Welding, Industrial Maintenance, and Computer Integrated Manufacturing. There are also specialized programs at all of the nearby state universities including the University of Illinois at Urbana-Champaign, Eastern Illinois University and Southern Illinois University at Carbondale to name a few.

Thanks to these programs and the overall support of local schools and universities students have access to training that can get them on the job in a shorter period of time, with a smaller capital investment than traditional university programs.

## **EFFINGHAM COUNTY OCCUPATION STATISTICS**

Healthcare	- 18.5%
Manufacturing	- 16.6%
Retail Trade	- 13.1%
Education Services	- 4.9%
Construction	- 4.7%
Finance and Insurance	- 2.4%

*\*Data provided by the IDES*



Each year we are proud to partner with local businesses to host Effingham County Manufacturing Day, bringing awareness to 300 area high school students of the availability of the many career options that area manufacturing offers. This event is designed to educate and inspire students that are at an age when they begin to contemplate their future to consider all of the opportunities available to them here locally.

Manufacturing and distribution companies and Effingham County are great friends, offering each other myriad mutual benefits. The jobs created by these companies attract and retain not only the local population, but extend to areas outside of the County, drawing people to this community. More people means more consumers which is great news for local business. This infusion of revenue to the community aids in local programs, education, infrastructure, development and leadership to support businesses and individuals in cultivating all of the growth and potential of this dynamic county.







Continental Mills is proud to celebrate 5 years of manufacturing in the **Effingham Community**.



Our employees are passionate about **inspiring people** to create, share, and connect through food.



**KRUSTEAZ**



CONTINENTAL MILLS

# STAFFING SOLUTIONS TO FIT YOUR BUSINESS NEEDS

Express Employment Professionals has a solution for your hiring needs. Whether you want temporary help now, or you're looking for the perfect fit for a long-term position, Express has skilled workers ready when your business needs them.

Call or go online today to see how Express can help.

Solutions include:

- Office Services
- Commercial
- Professional
- Onsite Services

(217) 347-2224

813 N 3rd Street  
Effingham, IL 62401

**2.58  
MILLION**  
PEOPLE ARE EMPLOYED BY  
STAFFING COMPANIES  
EVERY BUSINESS DAY.

**Express**  
EMPLOYMENT PROFESSIONALS

source: American Staffing Association



[ExpressPros.com/EffinghamIL](http://ExpressPros.com/EffinghamIL)



HSBS  
**St. Anthony's**  
Memorial Hospital

**Emergency Room  
RENOVATED  
WITH CARE**

[STANTHONYSEFFINGHAM.ORG/EMERGENCY-DEPARTMENT-EFFINGHAM](http://STANTHONYSEFFINGHAM.ORG/EMERGENCY-DEPARTMENT-EFFINGHAM)



DOWNTOWN EFFINGHAM BUSINESS GROUP PRESENTS

## **HOMETOWN** CHRISTMAS

### **Sponsorship Program**



#### **SILVER Sponsor - \$250**

5 Ice Skating Tickets.

Company name on event flyer, all promotional material & social media.

Sponsors listed on banner displayed at event.



#### **GOLD Sponsor - \$500**

15 Ice Skating Tickets.

Company logo on event flyer, all promotional material & social media.

Sponsors listed on banner displayed at event.

Mentioned as Event Sponsors on radio & newspaper advertising.

*Please make checks payable to:*

*Downtown Effingham Business Group*

*and mail to: P.O. Box 643, Effingham, IL 62401*



*Questions Contact:*

*Lori Worman (217) 821-2238*

*dlworman@live.com*

SOMETHING NEW!



*Guiding you in the right direction*

## FIRST FRIDAY A.M.

### *Speakers:*

State Senator Jason Plummer (54th District)  
State Senator Dale Righter (55th District)  
State Rep. Blaine Wilhour (107th District)  
State Rep. Darren Bailey (109th District)

**When:** Friday, October 4 • 7:30 a.m. – 8:30 a.m.

**Where:** Keller Convention Center

**Cost:** \$15/person. Registration info available at  
[EffinghamCountyChamber.com](http://EffinghamCountyChamber.com)

**Kurt A. Strullmyer, President**  
**Investment Advisor Representative**

**Corey McDaniel, Vice President**  
**Insurance Services**

105 S. Maple St., Effingham, IL 62401  
(217)347-9697

1942 E. McCord St., Centralia, IL 62801  
(618)532-7221

[www.compassadvgroup.com](http://www.compassadvgroup.com)

Securities and investment advisory services offered through Woodbury Financial Services, Inc., Member FINRA, SIPC and Registered Investment Adviser. Compass Advisory Group and Woodbury Financial Services, Inc. are unaffiliated entities. Investments fluctuate and when redeemed may be worth more or less than original value.



**JOB** Effingham County  
**F A I R**

Thank you to all of the businesses that participated in our recent Job Fair! We hope that many of you found highly qualified individuals to add to your teams.

If you have more positions to fill, we wanted to take this opportunity to remind members of the Chamber that one of the many benefits available to you is the ability to post job openings on our website at no cost.

To post an ad, email Becky Brown at [bbrown@effinghamcountychamber.com](mailto:bbrown@effinghamcountychamber.com) with the title of the position, a description of the duties, and how many people you would like to hire for the position and we will get your ad posted right away.



**EFFINGHAM COUNTY**  
**CHAMBER OF COMMERCE**  
*Engaging Business and Community*

## LEARN MORE ABOUT HUMAN TRAFFICKING

A public information session has been scheduled for Thursday, November 7 at the Keller Convention Center to share information with the community on Human Trafficking and things they can do to assist law enforcement in identifying human trafficking.

Speakers will include:

- Annie Shomaker, director of Eden's Glory, a home where victims can be restored
- Effingham Chief of Police Jason McFarland
- Nikki Quandt, Executive Director of Heartland Human Services
- A human trafficking survivor

**When:** Thurs., November 7 • 6:30 p.m. -7:30 p.m.

**Where:** Keller Convention Center

**Cost:** Free and open to the public

## HUMAN TRAFFICKING IS MODERN-DAY SLAVERY.

## ILLINOIS RANKS 9<sup>TH</sup> IN THE NATION IN HUMAN TRAFFICKING ACTIVITY.



## Walk In. Be Treated.

Effingham's First Combined  
Primary and Urgent Care Clinic.

### Occupational Health

Getting your employees well & back to work!

### Physicians On-Site Every Day

Each patient is seen by a physician, not a nurse practitioner or physician's assistant.  
You deserve nothing less.



EFFINGHAM  
**PromptCare**  
You're Sick. We're Quick.



401 N. Mulberry St. Effingham, IL 62401 • 217.347.0768 • M-F 9am-5:30pm • [effinghampromptcare.com](http://effinghampromptcare.com)



2020 Edition  
Effingham County Map

EFFINGHAM COUNTY CHAMBER OF  
COMMERCE & THE EFFINGHAM  
CONVENTION AND VISITORS BUREAU

**ADVERTISING RATES**

3" x 2" - Map Side - \$360.00

6" x 2" - Map Side - \$649.00

3" x 4" - Map Side - \$649.00

Featuring Effingham County, City of Effingham, Lake Sara &  
Teutopolis Street Maps

Only map endorsed and distributed by our Chamber

A portion of the proceeds will benefit the Effingham  
County Chamber

Contact: Jim Phelps  
Phelps Map Service  
P.O. Box 622  
Charleston, IL 61920  
(217) 345-4007  
jmphelps@consolidated.net

10k Total Distribution  
22"x 28" Large Version



Don't spend another day uncertain of your IT security.  
Call SDS today and gain peace of mind.

We can assist you with all of your technology needs;  
including hardware, software, managed services, and  
even UCAAS phone systems!



**TECH  
SHIELD**



PH: 217.347.5242 **SDS**tech.net



**TOMORROW'S  
TREATMENT  
▶ TODAY**



**CROSSROADS CANCER CENTER 217-342-2066**

Hanna Saba, MD • Vijay Damarla, MD, MPH • Casey Duncan, MD • Philip Dy, MD

[CancerCareSpecialists.org](http://CancerCareSpecialists.org)

**EFFINGHAM • OLNEY • FLORA • FAIRFIELD • VANDALIA**

Partnering with the Effingham Area Chamber of Commerce, The RMC Village Square Mall Cinema along with 1 Better Advertising will be offering Chamber members a **FREE HD VIDEO PRODUCTION** of a 15 or 30-second commercial with the purchase of a 6-month advertising package.



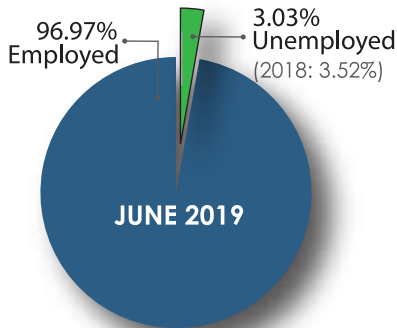
Chamber members will also receive a 20% discount off the rates of any ad package. The RMC Theaters have recently completed some major renovations including a new lobby, expanded concessions with a larger food and drink menu, beer and wine service, and new luxury suite seating in 3 of the 8 theaters. With the upcoming holiday season blockbusters set for release including Frozen 2 and the next Star Wars movie....what better time to get your message in front of a captive audience. Once completed the ads will be featured before every movie on all 8 screens. That ads up to over 4,500 movies and 70,000 people over a 6-month period.

To reserve your on-screen commercial spot contact  
**Craig Takalo at 952-239-3080 or at [craig@1better.net](mailto:craig@1better.net)**

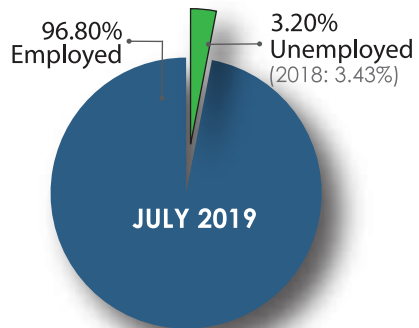


# ECONOMIC INDICATORS

## EFFINGHAM COUNTY LABOR MARKET



Total Labor Force: 19,494  
 Effingham County Unemployment: 3.03%  
 Illinois: 4.0%      United States: 3.8%



Total Labor Force: 19,701  
 Effingham County Unemployment : 3.20%  
 Illinois: 4.2%      United States: 4.0%

June-July 2019

## CITY BUILDING PERMITS



**Residential Permits: 16** (YTD: 27)

**Est. Cost of Construction: \$2.1MM**

(YTD: \$4.8MM)

2018 Total RESIDENTIAL Construction Permits:  
 33 at \$3.7MM

**Commercial Permits: 31** (YTD: 53)

**Est. Cost of Construction: \$5.3MM**

(YTD: \$15.7MM)

2018 Total COMMERCIAL Construction  
 Permits: 39 at \$1.6MM

## EFFINGHAM COUNTY BANK ASSETS

**June 30, 2019: \$1,745,568,000**

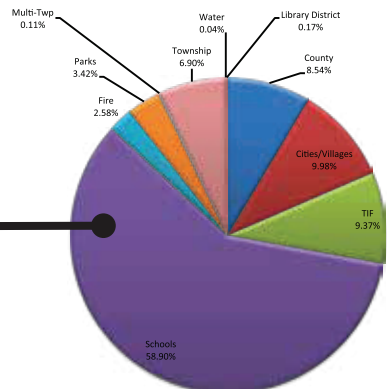
June 30, 2018: \$1,681,466,000

## EFFINGHAM COUNTY PROPERTY TAXES

2018 payable 2019 tax year is \$54,174,880.90

2017 payable 2018 was \$51,886,981.58

An overall increase of 4.4%.”



## Sources:

Illinois Department of Revenue, [www.revenue.state.il.us](http://www.revenue.state.il.us); Illinois Department of Employment Security, [www.lmi.ides.state.il.us](http://www.lmi.ides.state.il.us); Effingham City Building Official, [www.effinghamil.com](http://www.effinghamil.com); Federal Deposit Insurance Corporation, [www.fdic.gov](http://www.fdic.gov); U.S. Census Bureau, [www.census.gov](http://www.census.gov); and, Effingham County Treasurer, [www.co.effingham.il.us/treasurer](http://www.co.effingham.il.us/treasurer)



# CELEBRATIONS



Sarah Bush Lincoln Evergreen Clinic Ribbon Cutting



2019 Chamber Community Scholarship Recipients



Top Shelf Beer Wine & Spirits Ribbon Cutting



Effingham Ham Jam Winners

Top: Al's Tire Mart (Squeals on Wheels) Hometown Throwdown Corporate Challenge Winners;  
Bottom: Kick Addis BBQ - KCBS Reserve Champion



Reverse Raffle - Grand Prize winners (split \$5K pot)



Glik's Ribbon Cutting - \$122 used as ribbon, representing no. of years the company has been open. The money was donated to The Chamber.



Reverse Raffle - Second Chance Winners;



## CONGRATULATIONS

Lake Land College President Dr. Josh Bullock has been appointed to the Illinois Student Assistance Commission by Governor J.B. Pritzker.

Adam Mette from Probst Auto Body has received the Administrative Support Award from Fender Bender publications.

Pat Bauer, President and CEO of Heartland Dental, was recently recognized as a top 100 CEO by Glassdoor, one of the world's largest job and recruiting sites.

Tick Tock Energy has been named one of the top solar contractors in the U.S. for the fifth year in a row by Solar Power World magazine, with a rank of 297.

Midland States Bank's Midland Equipment Finance, its business equipment financing division, has ranked among The Monitor Daily's Top 100 U.S. equipment leasing companies by total assets and annual volume in 2018, following its first year in operation.

HSHS St. Anthony's Memorial Hospital has received prestigious international recognition as a Designated Baby-Friendly birth facility from Baby-Friendly USA, a global program sponsored by the World Health Organization and UNICEF which encourages and recognizes hospitals and birthing centers that offer an optimal level of care for breastfeeding mothers and babies.

Chamber President & CEO Norma Lansing has been appointed to the Illinois Advisory Committee of the U.S. Global Leadership Coalition. USGLC is an influential network of businesses and NGOs, national security and foreign policy experts and military leaders who are dedicated to highlighting the importance of U.S. engagement abroad. The organization works across the country to educate the American public and policymakers on the importance of investing in diplomacy and development alongside defense in building a strategic, modern foreign policy.

## NEW MEMBERS

### COMMUNITY BLOOD SERVICES OF CENTRAL ILLINOIS

Krista Jiroutek, Recruitment Development Coordinator  
2801 S 10th St, Springfield  
(217) 367-2202  
[www.bloodcenter.org](http://www.bloodcenter.org)  
Blood Services

### TEUTOPOLIS STATE BANK

Hank Koester, President  
106 E Main Street, Teutopolis  
(217) 857-3166  
[www.teutopolisstatebank.com](http://www.teutopolisstatebank.com)  
Banks

### HSHS MEDICAL GROUP

Craig Brace, Director of Marketing & Communications  
3051 Hollis Drive, Suite 200, Springfield  
(217) 321-9292  
[www.hshsmedicalgroup.org](http://www.hshsmedicalgroup.org)  
Healthcare

### COUNTRY RHODES FUNDRAISING & CATERING

Lee Althoff, Owner  
P O Box 26, Effingham  
(217) 347-3474  
[www.countryrhodes.com](http://www.countryrhodes.com)  
Catering

## Member Milestones

### Farmweld

Celebrating 40 Years

### Continental Mills

Celebrating 5 years in Effingham

The Boos Block Mystery Oil and Board Cream has hygienic benefits, according to a recent study conducted by the University of Illinois. The John Boos & Co. product used on cutting boards, kitchen islands and counter tops can now be listed as antimicrobial by the National Sanitation Foundation. The study confirmed the benefits of the registered trademarked oil.



## WELCOME

Melissa Kanizer is the new Director of Admissions at Evergreen Nursing and Rehab.

Doehring Winders & Co. LLC has added Lucas Probst, Sarah Lustig and Jerrod Eckard to its professional staff.

HSHS Medical Group welcomes Dr. Scott Urch, orthopedic and sports medicine and Dr. Kevin Calder, plastic and reconstructive surgeon. Dr. Urch and Dr. Calder see patients at 900 W. Temple in Effingham.

Dr. Connor Kabbes has joined the practice of Weber Optiks.

Effingham Obstetrics and Gynecology Associates welcomes Dr. Abbie Massengill to the clinic.

Drs. Sehy and Jones welcomes Dr. Michael Stock and Dr. Craig Woods.

SDS Technology welcomes Vanessa McKee as Office Manager

Amber Brungard has been named General Manager and Allison Funneman, Assistant General Manager, for LaQuinta Inn & Suites.

Megan Anderson is the new General Manager and Travis Diss, Outreach Manager, for The Clinic Effingham.

Clare Sedlacek is the new Marketing Coordinator for ApexNetwork Physical Therapy.

Shawn Griffith is a new Sales Executive for Dimond Bros. Insurance Agency

Justice Grown welcomes Brandy Strohl as Production Manager.

The Chamber welcomes Kristin Probst as our Coordinator of Marketing and Communications



## CHANGES & NOTES

Chuck's Satellite Inc. has moved to 103 W. Section Street in Dieterich.

HSHS St. Anthony's Memorial Hospital has named Bobbi Kinkelaar as Chief Nursing Officer.

Wright's Furniture has added locations in Robinson and Taylorville.

Midland States Bank has completed acquisition of HomeStar Financial Group, Inc.

L. Kaye DeSelms Dent has joined Dent Law Offices, LTD as Managing Partner. The firm also welcomes Paralegal Frank Sandoval.

Effingham County Museum has a new phone number: 217-240-2471.

Express Employment Professionals has announced the addition of James Rieck as a franchise owner and the promotion of Katie Mills to Employment Specialist.

Heart & Home Realty has affiliated with franchise Weichert, Realtors® and will now be known as Weichert, Realtors® - Heart & Home. Office location and phone number remains the same.

Nova Solutions has a new website: [novasolutionsinc.com](http://novasolutionsinc.com)

Turnkey Computer Systems, Inc. has relocated to 2303 Hoffman Drive, Suite A, Effingham.



Illinois Department of Tourism's 2018 annual report shows that Effingham County contributed \$170.71 million in travel expenditures and \$3.44 million in local tax revenue during 2018. These represented a 4.1% increase in expenditures and 2.7% increase in tax revenue.

# CALENDAR OF EVENTS

## OCTOBER

- event: 5-7pm  
**Business After Hours**  
@ Bushue HR
- event: 7:30-9am  
**Coffee & Connections**  
@EJ Water Cooperative
- event: 8:30am-4:30pm  
**Thought Patterns  
for High Performance**  
@ Effingham Public Library
- event: 5-7pm  
**Business After Hours**  
@ Drs. Sehy & Jones
- event: 12-1pm  
**First Friday Luncheon**  
@ Keller Convention Center
- event: 5-7pm  
**Business After Hours**  
@ Dieterich Bank Corporate Center
- event: 7:30-8:30am  
**First Friday A.M.**  
@ Keller Convention Center
- event: 5-7pm  
**Business After Hours**  
@ AKRA Builders
- Chamber Radio Day**  
@ WXF
- event: 7:30-10am  
**HR Roundtable**  
@ Dieterich Bank Corporate Center

## NOVEMBER

- event: 5-7pm  
**Business After Hours**  
@ Village Wine Shop
- Hometown Christmas**  
@Downtown Effingham

## DECEMBER

- Hometown Christmas**  
@Downtown Effingham
- event: 5-7pm  
**Business After Hours**  
@ Roy Schmidt Honda
- event: 12-1pm  
**First Friday Luncheon**  
@ Keller Convention Center

## JANUARY

- Annual Chamber  
Recognition Gala**  
@ Keller Convention Center

Online calendar available at  
[EffinghamCountyChamber.com](http://EffinghamCountyChamber.com)

*Please tear off and post for your employees.*

# THOUGHT PATTERNS FOR HIGH PERFORMANCE® FIVE.ZERO

## When

October 17 & 24  
8:30am-4:30pm

## Where

Effingham Public  
Library,  
Workman Room  
200 N Third St.,  
Effingham

## Investment

\$300 per person  
or \$275/person for  
groups over 2 persons.  
Continental Breakfast,  
Snacks & Lunch Provided

## To Register:

217-342-4147  
[www.effinghamcountychamber.com](http://www.effinghamcountychamber.com)

Would you like to:

OVERCOME BARRIERS

LEARN TEAM  
COLLABORATION  
TECHNIQUES

CREATE PRODUCTIVE  
THOUGHT PATTERNS

Join the hundreds of local  
residents that have  
achieved personal and  
professional growth from  
this valuable training!



**EFFINGHAM COUNTY**  
**CHAMBER OF COMMERCE**  
*Engaging Business and Community*



**RECREATIONAL  
MARIJUANA  
SEMINAR**  
**Thursday, December 12**  
*See Page 5 for details.*

PRST STD  
U.S. POSTAGE  
**PAID**  
PERMIT NO. 172  
EFFINGHAM, IL 62401

**(217) 342-4147 | [EffinghamCountyChamber.com](http://EffinghamCountyChamber.com)**

903 N. Keller Drive, PO Box 643  
Effingham, IL 62401