

NETWORK

Effingham County Chamber of Commerce

AUGUST 2020

**Progress And
Growth**



ALL LANES



**EFFINGHAM COUNTY
CHAMBER OF COMMERCE**
Engaging Business and Community

CREATE. CONNECT. COLLABORATE.

We are Focused on Business Growth & Development through Collaborative Partnerships and Strategic Initiatives.

CHAMBER MEMBERSHIP CORE BENEFITS

- Referrals to Chamber members only through the Chamber website, phone calls & walk-ins
- All your employees are members too and can access Chamber benefits
- Cost-effective advertising and sponsorship opportunities offers exposure that are only available to Chamber members
- “Proud Member” decal, virtual badge and plaque
- Announcement of your membership and business milestones in Chamber Communications Center (print and online)
- Complimentary Notary Public services
- Display business cards & brochures in Chamber lobby
- Use of Chamber bulk mailing permit (restrictions apply, - postage not included)
- Access to Chamber events, programs & services at member pricing, including the Business Outreach Program, Incubator Network
- Annual subscription to Chamber print, online and digital publications
- Guide the direction of the Chamber by participating in surveys and polls
- Opportunity to build connections through committee & taskforce participation
- Access to Full-time Professional Chamber Staff located at Chamber office, 903 N Keller Drive, Effingham, IL.
- Complimentary use of Chamber Conference Room during business hours (per availability)
- Printed Membership Directory



Get the most out of your membership! Contact us today for information on how to take advantage of your membership benefits!

Effingham County Chamber of Commerce • 903 N. Keller Drive, Effingham, IL 62401 •
(217) 342-4147 • effinghamcountychamber.com

LETTER FROM THE PRESIDENT

Our focus on the various aspects of Effingham County's economy is designed to build better awareness, relationships and appreciation of the foundation that built and sustains Effingham County. In this issue, we focus on a key driver of our local economy - Transportation.

Transportation provides the ability to bring people from all directions to Effingham County to live, shop and do business, contributing to the economic base and quality of life.

From the beginning of Effingham County, roads and railroads are what brought people to the area. Early settlers found the rich soil desirable as the place they would stake their claim and make a living.

Today's landscape looks very different from those early years as wave after wave of development and improvement has transformed Effingham county into the bustling area we see today. Our location in the heart of the Midwest has made Effingham County a desirable location for manufacturing and distribution, regional health care, business and government offices and tourist related businesses to set up shop and create employment opportunities in the region.

The Chamber's history is strongly tied to the growth of Effingham County's transportation importance. As far back as 1921, the Chamber was involved in the development of the transportation and hospitality needs of the community as we assisted in the development of a new hotel for the community (The Benwood, now the site of the Effingham County Office Building), secured right of way for highway construction and development of the airport and worked to obtain more "hard roads" for access to the community.

As we look to the future, the Chamber will continue its role as a leader in Effingham County's growth and development. Check out the new Effingham County Economic Development Update on pages 8-9, which showcases lots of new construction taking place all over Effingham County.

Leading change for the betterment of the communities we



serve was the role of the early Chamber and continues as our role today. As we've witnessed over the last few months, we have entered a world of enormous change to the way we do business, interact with our employees and customers and plan for the future.

You can be assured that the Chamber's leadership role in the community is important to ensuring that Effingham County continues to grow and prosper into the future. We have had to make changes to our business model, just as you have, but our goal to be your advocate, your resource and your business partner has not changed.

The Chamber's work creates a strong community by connecting businesses to valuable resources and relationships, driving initiatives to improve our region and advocating for businesses with a unified voice.

We are **#CommunityStrong**.

A handwritten signature in black ink that reads "Norma Lansing".

Norma Lansing, President & CEO

nlansing@effinghamcountychamber.com

217-342-4147

THANK YOU TO OUR CAPITAL INVESTORS

Stakeholder Level



HSBS
St. Anthony's
Memorial Hospital

Advocate Level



Catalyst Level



VIRTUAL

FALL DRAW



EFFINGHAM COUNTY

CHAMBER OF COMMERCE

Engaging Business and Community

FALL DRAW

REVERSE RAFFLE

September 25th

fLIVE@5:30pm

**EFFINGHAM COUNTY CHAMBER
OF COMMERCE**

Tickets: \$50 ea.

\$5000 GRAND PRIZE

**ONLY 250
TICKETS**
Available!

To register: Visit www.effinghamcountychamber.com

HOME SWEET LOAN

*We have
a home
loan
for every
shape
& size!*



Rates as low as:

**2.250%
APR**



**Crossroads
Bank**

Member **FDIC**
LENDER

2000 S. Banker St. • (217) 347-7751 • 806 N. Keller Dr.

www.crossroadsbank.com

APEXNETWORK.
PHYSICAL THERAPY

**WE OFFER DRY
NEEDLING!**

Dry Needling can help reduce inflammation, decrease muscle tension, and ultimately relieve pain. A fine needle is placed into a muscular trigger point. Trigger points can make it painful to perform everyday activities and often radiate pain to other areas of the body. Once the needle is positioned, the muscle is able to contract and release.

THIS PRACTICE CAN HELP TREAT A NUMBER OF AILMENTS INCLUDING:

- Pain in the neck, back, hip or knee
- Muscle strains or spasms
- Sciatica
- Tendonitis
- Sports-related injuries
- Headaches and whiplash
- TMJ or facial pain

Click Now or Call/Text 217-280-4550 to schedule an appointment
with Ashley Meseke, DPT, Certified Dry Needling Provider.

Need a break from work-ING at home?



Amenities

Internet Access
Conference Room
Kitchenette
Restrooms
Private Phone Room
Corporate Plans
Locking Cubicles
Available
Free Coffee

INDIVIDUAL AND CORPORATE MEMBERSHIPS

Single
Membership

\$85/Month

Locking Cubicle

add \$100/Month

DAY PASSES

Day Passes are available to the public at a rate of \$10 per 24 hour period.
Payment is due upon issuance.

Terms and Conditions Apply. Contact Us for Details

109 W. Jefferson Ave. Effingham, IL, 62401
www.axis109west.com

Based on a recent poll, the Chamber of Commerce website is one of the top resources utilized by the community to search for local career opportunities.

Find your next great employee...

As a member of the Effingham County Chamber of Commerce, many of our membership tiers have access to post job openings on our website. This goal of this *complimentary* service is to help bring great employees and great employers together!

Jobs are updated daily and many are featured in our weekly LOCAL LINK e-publication, delivered to nearly 1800 inboxes each week! If you are looking for your next great hire, the Chamber can help! Email job listings to jniemerg@effinghamcountychamber.com.



RE-OPENING YOUR BUSINESS

Direct Mail Can Help

Re-opening your business can be very challenging to say the least. Once you have your employees back, get your inventory ready, sanitize your physical location, and prepare your new "Go To Business Procedures", you now need customers.

Direct Mail, along with Social Media and Email Marketing campaigns together are the best way to let your customers know that you're ready and prepared to welcome them back.

Whether it's a postcard, an invitation, or a letter, these marketing vehicles get your message into the hands of your customers and explain your preparedness to make your business safe and welcoming.

It's going to be challenging re-opening, but just like when you first opened your doors, you have the courage and perseverance to be extremely successful.

Dan Patton

*Patton Printing & Graphics
902 West Wabash
Effingham, IL 62401
217.347.0220
www.pattonprinting.com*

The Value of Direct Mail



Direct mail outperforms digital channels by nearly

600%

81%

of recipients read or scan their mail daily



85%

of consumers will open mail if it looks interesting



Like Ask-An-Expert? Chamber members are invited to submit a column on a subject of their choosing. A 300 word (text only) article can be submitted to Norma Lansing at nlansing@effinghamcountychamber.com.

The article can not be a solicitation for your business, but rather a sharing of topics, tips and trends relevant to current business needs. With the purchase of an Ask An Expert feature, your business will receive a ¼ page ad in the Network magazine and the Ask An Expert articles will be available on the Chamber website. Only two Ask An Expert columns will be featured in each issue of Network. If you have questions, please contact Norma at 217.342.4147.

BRANDING

It's All About You!

We Can Help With Visual Marketing

www.pattonprinting.com



PATTON
PRINTING & GRAPHICS

902 W WABASH AVE • EFFINGHAM
print@pattonprinting.com • 217-347-0220

CROATIA & ITS ISLANDS!

Small Ship Cruising on
the Adriatic Coast
with Optionals 2-night
Dubrovnik Pre Tour Extension

Aug. 13-24, 2021

Contact:

Donna Cravens

Effingham Travel Agency

(217) 342-3965

donna@effinghamtravel.com

Book Now
& Save
\$550
Per Person



EFFINGHAM COUNTY
CHAMBER OF COMMERCE
Engaging Business and Community



Don't delay your
CARE.



HSBS
St. Anthony's
Memorial Hospital

At all times, HSHS St. Anthony's stands ready to care for you and your family. You can trust in our team of experts to keep you safe in your moment of need. We are committed to our calling to care for you.
Learn more at WeCare.hshs.org.



After COVID – What is Effingham County's Path Forward?

When COVID-19 hit in mid-March and most businesses were shut down, the Chamber went into action in a new and different way. Our connection to our members and the community became much more personal. We first surveyed members asking about the effects that the pandemic has had on their businesses and what the Chamber and the community could do to help them. Then, we reached out to community leaders to gather information on current needs, future needs and a long term view of the community. How we as businesses support each other will lay our foundation for moving forward.

Following is a synopsis of the responses we received from community leaders, which included Chamber Board members, industry leaders and elected officials. For detailed results, please contact Norma Lansing at (217) 342-4147.

In your opinion, what are the top 3 challenges that will be faced by Effingham County businesses from now to Sept. 1st?

The majority of cited challenges were related to the Business Impact of COVID-19 with key themes focused around the reopening of businesses, compliance with COVID restrictions and decreased cash flow. The second highest mention of challenges were related to health and safety concerns about COVID-19 with key themes focused around employee and resident safety and whether businesses can reopen and operate in a safe manner. The next category of common responses was related to the influence of consumer behaviors with key themes focused around the fear of shopping/dining inside and confidence in safety measures as to whether businesses can reopen and operate in a safe manner.

How can the Chamber best serve the business community during this time?

Based on the feedback from leaders, the top three highest rated roles for the Chamber are: providing relevant information through Chamber communications/ website; Outreach to policy makers to support business continuation initiatives; and, Partnerships with other organizations to provide business support (SBDC, SBA, HR organizations, etc.)

In your opinion, what are the challenges Effingham County will face over the next 3 – 5 years?

The majority of cited challenges were related to the Economic Recovery after the COVID-19 crises main themes focused on business growth, small business vitality and economic climate. The second highest mention of challenges were related to workforce with key themes focused on having the skilled employees needed for businesses, workforce shortage for specific industries and skillsets, and high unemployment levels. The third category of common responses, albeit much less of a concern than the first two, was about the need for housing in the county.

How important are these roles for the Effingham County Chamber for 2020 – 2023?

Based on the feedback from leaders, the top five highest aggregated roles for the Chamber over the next three years are: to convene leaders, influencers, and policymakers to address business and community challenges; represent business interests to the community and local, state and national policymakers; promote Effingham County as a good place to live, work and visit; serve as a community partner with the local government agencies and the school district; and, promote Effingham County businesses to the community and surrounding areas.

In the year 2030, Effingham is ranked on Livability's Top 100 Best Places to Live in the U.S.. What factors made Effingham County so desirable for employers and residents?

Leaders who responded to the Chamber survey were asked to rank a list of factors that will influence Effingham's desirability to attract and retain residents over the next 10 years. The aggregated top factors that influence Effingham's desirability over the next decade are: Pro-business policies that allow for market-driven growth; Integrated planning and collaboration among the business community, educational institutions, non-profit organizations, and the government and public sector; and, Investments for infrastructure.



EFFINGHAM COUNTY
CHAMBER OF COMMERCE
Engaging Business and Community

**PROMOTE YOUR BUSINESS AND
SHARE THE MICROPHONE WITH
OUR AREA'S TOP ON-AIR TALENT!**



Call today to book your slot!
Space is limited.

(217) 342-4147

Fall | WXEF | October 15th

better businesses deserve better websites.

The website is the central hub for your business.
Is yours truly telling your story?
Is it engaging your audience?

Our approach to design and development leads to
sites that not only inspire and engage,
but elevate your brand.

are you ready for a better website?

let's talk.



imaginethis!
MARKETING GROUP

217.342.2661
thinkcreatedo.com

branding & design • web development • digital & social media advertising • content marketing



EFFINGHAM COUNTY ECONOMIC DEVELOPMENT UPDATE

Illinois Fiber Connect, LLC was among entities awarded funding as part of the state's largest broadband expansion initiative announced in June by Governor Pritzker.

Nearly \$5 million was awarded for a Broadband Access project in Effingham County that will serve a total of 844 premises in Beecher City and south of Effingham. Illinois Fiber Connect, LLC will improve unserved areas to 1Gb per second download and 1Gb per second upload as demand warrants.

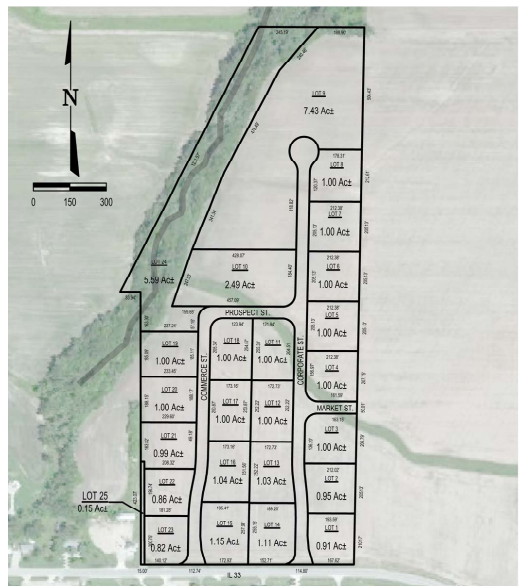
Building a fiber-to-the-premises network that provides advanced, high-speed broadband services to households, businesses and farms in the grant area improves access to critical school e-learning applications while also providing residents the opportunity to work from home. The broadband network will improve access to rural health care resources and will stimulate a more robust local area economy, according to the announcement.



CANARM facility in progress, Teutopolis



Bobcat of Effingham facility in progress, Teutopolis



The Village of Dieterich is developing a new industrial park - Dieterich Industrial Park East - using the success of their residential development as a model for industrial development. The 30-acre park is in the Village's new TIF 3 district, with 25 lots available for \$10,000/acre. The village is looking to offer more jobs, services and amenities.



Jumpin' Jack Flash, Altamont

EFFINGHAM COUNTY ECONOMIC DEVELOPMENT UPDATE



New Farmweld offices, Teutopolis



Doedtmann Apartments, Effingham



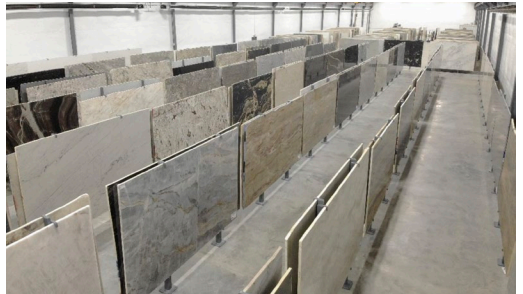
Altamont Senior Residence, Altamont



New Banquet Hall, Teutopolis



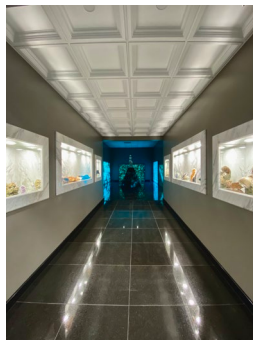
J & J Ventures new corporate center, Effingham



Pyramid Marble
expansion and new
showroom, Effingham



Golden Fields Apartments, Effingham



PLANES | TRAINS | AUTOMOBILES

Getting you from here to there is easier in Effingham County

Transportation has been at the center of Effingham County's development, starting in the 1800s when settlers moving west along the Old Cumberland Trail (U.S. Route 40), stopped to work a living from the rich prairie soil. The coming of the railroads in the 1850s signaled the area's first "boom", followed 100 years later with initiation of the Interstate Highway System.

Today, Effingham County is a regional trade, employment, industrial and transportation hub, increasing population daily as people come to work, shop and live. Thanks to the county's location at the intersection of major interstates and highways and railroads, the county is attractive to transportation -related industries which generates a strong business economy.

The ability to ship products and services quickly and efficiently to major markets and deep-water ports attracts major industries and distributors. To make that happen, government leaders and businesses work together to ensure that transportation services are meeting the needs of the local community.

Many local manufacturers and distributors have found Effingham County's transportation network

a boost to their company's ability to move products nationwide. Siemer Milling Company is one of the local companies that has found savings with rail shipping. The company loads eight rail cars each week with wheat flour to take to market in addition to its trucking fleet.

Local economic development professionals tout Effingham County's transportation network to industrial and commercial prospects. Sasha Althoff, City of Effingham Economic Development Specialist notes: "Having both the Canadian National and CSX railroads cross at Effingham provides an asset for businesses located here or looking to locate. Companies are able to utilize the Effingham Shortline Railroad to access the best rates and advantages of each line. We often find that when companies are looking for new locations, access to rail is important."

A key driver of our local economy

Transportation provides the ability to bring people together from all directions; drawing people to the community. This constant movement results in numerous economic benefits including local development of retail, medical, governmental and industrial facilities. These improvements result in increased employment opportunities and the infusion of sales tax dollars into the local economy to support infrastructure, growth and the overall prosperity of Effingham County.

The transportation industry in Effingham County generates a payroll of 40 million annually and employs @4% of the county's employment base.* The area draws from a trade population area of 175,000 people.

Effingham County contributed to the state's economic domestic growth, with \$171 million in travel expenditures (a 4.1%



increase) and \$3.44 million in local tax revenue (a 2.7% increase) from FY18 to FY19.*

Planes

Air transportation in Effingham County is housed at the Effingham County Memorial Airport which offers two runways, hangar storage, aviation gas and jet fuel and pilot and passenger services in a terminal constructed in 2011.

The airport is owned by Effingham County and was named 2019 General Aviation Airport of the Year by the Illinois Department of Transportation. Corporate jet traffic by local manufacturers, distributors and retailers as well as private plane usage has created the need for expansion of the ramp area and plans are in the works for a \$3 million runway extension in 2022 with 90% of the funding being made available through state Rebuild Illinois funding.

Effingham County Memorial Airport generates an estimated \$5 million in annual economic impact.

Trains

Effingham County offers a great competitive advantage for companies needing to transport products, with access to two Class I rail lines and connectivity between the east-west and north-south lines through a short-line railroad.

Canadian National Railway (north-south mainline) and CSX Transportation (east-west mainline) serve the area with Class 1 lines that can reach over 75%



of the U.S. population, all major Canadian markets and over 70 ports. Union Pacific also serves the county.

The addition of a short-line railroad in the early 2000s, Effingham Railroad Company, provides connections between industrial parks and Class 1 lines with reliable, responsive and cost effective service. EFRR offers nearly 10 miles of track that offer a Storage in transit model allowing companies the advantage of loading product onto a rail car for storage until it is shipped to the customer. Effingham Railroad provides mainly outdoor storage for items such as steel and wood products. EFRR handles 3-4,000 carloads annually.

The Effingham region is also served by Amtrak for daily passenger service between Chicago and New Orleans on the City of New Orleans and twice daily corridor service between Chicago and Carbondale is available on the Illini and Saluki trains. For FY2018, Amtrak ridership through the Effingham station was 24,384 for boardings and alightings.*

Automobiles - and Trucks!

Effingham County's location and interstate access makes it one of the state's major freight corridors providing fast and affordable delivery of products in any direction to 34% of the U.S. population within an eight-hour drive and 75% within a 16-hour drive. Over 40,000 vehicles per day travel the interstates through Effingham, with nearly half of those identified as truck traffic.



Amtrak has announced plans to reduce most of their long-distance trains, including the City of New Orleans which stops in Effingham, to three-day-a-week service as of October 1, citing revenue losses related to COVID-19 reductions in ridership.



The company's goal is to "restore daily service on these routes as demand warrants, potentially by the summer of 2021."

Knowing that many area residents use the train on a regular basis, we encourage anyone with concerns on this cutback to contact U.S. Senators Dick Durbin and Tammy Duckworth and Congressman John Shimkus.

In recent years, substantial investment in improvements on the Interstate 57/70 corridor have been made in anticipation of future traffic growth and has included nearly \$200 million to add a third lane in each direction, reconstruct the U.S. Route 45 and Fayette Avenue interchange and rehabilitate or rebuild 13 bridges.

A major street development project planned in the city of Effingham is the widening of the heavily traveled Fayette Avenue (U.S. Route 40) through Effingham, which accommodates 15,000 to 18,000 vehicles per day. The project will stretch from the interstate exchange on the west to Willow Street on the east side of town. Plans are to convert the existing four lanes to five wider lanes and an additional pedestrian/bicycle path. Land acquisition will be the first step in the project, which is targeted for FY2021-2026 at a total project cost of \$61 million.

New streets and redevelopment of existing streets is ongoing throughout the county. In Effingham, the extension of Ford Avenue between Charlotte Avenue and North Fourth Street is on the drawing board in cooperation with a major retail development that is planned as well as the anticipated construction of a Meijer store.

Effingham is a popular stopping place and tourist attraction for travelers headed in any direction along the two coast to coast Interstates (57-70), two national highways (US Routes 40 and 45) and three state highways (Illinois 32, 33 and 37) that converge here. Hotels, restaurants, truck stops, gas stations, attractions and other amenities contribute to the county economy. More than 1,000 people are employed in the local tourism industry.

As we look to the future, effective logistics, transportation and distribution and smart technology will factor into the vehicles we drive and the modes of transportation we use. We look back at the early transportation advancements from horses to cars and know that the advancements in the future are likely not even imagined right now. One thing that won't change is Effingham County's place as a transportation center for planes, trains and automobiles.

Resources:
South Central Illinois Regional Planning, 2013 Survey of Local Airports
2018 U. S. Census Bureau, County Business Patterns
City of Effingham website
Amtrak Fact Sheet FY2018
Illinois Bureau of Tourism, 2019 Report
The Shortline Advantage
Illinois Department of Transportation

Join Chamber's texting program and bring important messages to your phone with reminders about Chamber events and community information. To sign up, text your name and cell phone number to Norma Lansing at **(217) 246-5844**.

Join the

Chamber Texting

Program Today!



Welcome



Dan Regenhardt (left) is the new Plant Manager for **Continental Mills**.

Sarah Bush Lincoln has added Dean Katsamakidis, DO to the cardiology team and Cody Gass, DMD to the dental clinic.

Amanda Jackson is the new HR Specialist for **Ryder System Inc.**

Grunloh Building Inc. welcomes Vice Presidents Patrick Grunloh & Andrew Grunloh. Their new website is www.grunlohbuilding.com.

CCI RediMix welcomes Matt Kessler - General Manager, Jon Horn - Accounting Manager and Kevin Ruholl - Q/C/Safety/SWPP Manager.

Ryan Gibson is **Eastern Illinois University's** Executive Director for Information Technology Services (ITS).

Planet Fitness welcomes new General Manager Anthony Woolever.

Kacee Smith is the new Customer Service Representative for **Crossroads Bank**.

Austin Brooks has been named Executive Director of the **Midland Institute for Entrepreneurship**, replacing Donnie Wilson, who has retired.

Austin Hartke has been added to the **Prudential Insurance** office of Rich Hartke as a Financial Professional Associate.

Changes & Notes

Kyle Kuhns has joined **Farm Credit Illinois** as an assistant vice president of crop insurance at the Effingham regional office.

Lexington Inn & Suites is now Holiday Inn Express & Suites. Their new website is www.hiexpress.com/effinghamil. Phone number is still (217) 994-9949.

Express Employment Professionals has relocated its Effingham office to 900 North Third Street, Suite D in Effingham.

Agracel, Inc. has announced that Dean Bingham will take over as CEO and President, effective January 1, 2021, replacing retiring CEO and Founder Jack Schultz. Schultz will remain as Chairman of the Board. Ryan Witges has been named Chief Operating Officer, effective immediately.

Homewood Grill has announced the opening of a second location in the Summer of 2021. Homewood Grill 2.0 will be located on South Banker street in front of Village Square Mall and will feature a drive through. The Willow Street location will remain open.

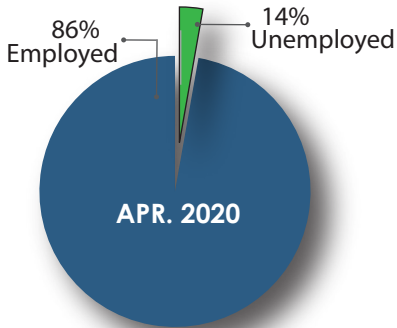
If you have news you want to share with the Chamber membership on special awards, recognition, employee promotions, etc. please e-mail the information to: Norma Lansing at nlansing@effinghamcountychamber.com



BALDA DENTAL will host its inaugural semester with Accelerated Dental Assisting Academy in October. With the ongoing need for dental assistants in the area, Balda's 10-week dental assisting school provides hands-on training and up to date technology that prepares students for a career in dental assisting right away. Balda's staff prepared the curriculum with classes taught on Saturdays at their office. To learn more about the program, contact Accelerated Dental Assisting Academy at 844-727-3755 and mention BALDA DENTAL.

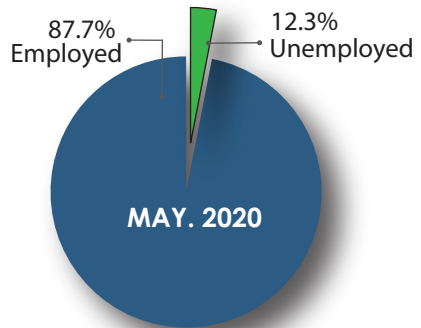
ECONOMIC INDICATORS

EFFINGHAM COUNTY LABOR MARKET



Total Labor Force: 18,519

Effingham County Unemployment: 14%
Illinois: 16.9% United States: 14.4%



Total Labor Force: 19,155

Effingham County Unemployment : 12.3%
Illinois: 14.7% United States: 13.0%

Q1-Q2 2020

BUILDING PERMITS

YTD Residential Permits: 21
Est. Cost of Construction:\$1.6MM

Q1-Q2 2019
Residential Construction Permits: 11
Construction Value:\$2.7MM

YTD Commercial Permits: 28
Est. Cost of Construction:\$3.3MM

Q1-Q2 2019
Commercial Construction Permits: 22
Construction Value:\$7.7MM

RETAIL SALES
Q1 2019

City: \$162.2MM
County: \$183.4MM

RETAIL SALES
Q1 2020

City: \$161.7MM
County: \$183.1MM

Sources:

Illinois Department of Revenue, www.revenue.state.il.us; Illinois Department of Employment Security, www.lmi.ides.state.il.us; Effingham City Building Official, www.effinghamil.com; Federal Deposit Insurance Corporation, www.fdic.gov; U.S. Census Bureau, www.census.gov; and, Effingham County Treasurer, www.co.effingham.il.us/treasurer

NEW MEMBERS

The Chamber encourages all members to do business with each other. The following companies and organizations have made an important investment in their business by joining the chamber. Please consider them for your personal and professional needs. To find a complete list of Chamber members, visit the Business Directory online at EffinghamCountyChamber.com.

EFFINGHAM COUNTY CEO

Molly Bushue, Facilitator
P O Box 1211, Effingham
(217) 254-0777
www.effinghamceo.com
Education/Schools

*HSHS St. Anthony's Memorial Hospital -
Pay It Forward Partner*

PROREHAB

Jon Frohning, Clinic Mgr/Physical Therapist
1302 Avenue of Mid America, Ste. 4, Effingham
(217) 606-3004
www.prorehab-pc.com
Physical Therapy

EFFINGHAM COUNTY FISH HUMAN SERVICES

Susan Elke, Chairman
P O Box 473, Effingham
(217) 868-5913
Non-Profit Organization
Midland States Bank - Pay It Forward Partner

THE HANDY MAN CAN, INC.

Doug Murrell, Owner/Operator
P O Box 1606, Effingham
(217) 663-9054
Home Services/Handy Man

BROUGHTON TATTOO COMPANY

Nicki Hendrix, Co-Owner
401 W National, Effingham
(618) 316-6207
Tattoo Parlor

LIBRA INSPECTIONS LLC

Cale Woolridge, Owner
803 N Seymour Street, Sullivan
(217) 402-8393
<https://librainspections.com/>
Home Inspections

EFFINGHAM ASSEMBLY OF GOD

Bryan Newswander, Lead Pastor
3200 S Banker Street, Effingham
(217) 536-6099
<https://ea.church>
Churches

MEMBER MILESTONES

Modern Family Dinners

1 year in business

Grunloh Building, Inc.

15 years in business

Noah's Ark Pet Shoppe

20 years in business

Prudential Insurance - Rich Hartke

20 years in business

StangArts

20 Years

CQI Associates

25 years

Southern Illinois Healthcare Foundation

35 Years

Effingham County FISH Human Services

50 years

Heartland Human Services

50 years

YYard Auto & Truck

50 years

Rural King Supply

60 Years

CELEBRATIONS



Eastern Illinois University has ranked #1 in the State of Illinois among public institutions for job placement after graduation according to Zippia.com, a career resources website.

Effingham Noon Rotary has recognized Dr. Peter Bonutti with the annual Vocational Excellence Award.



Congressman John Shimkus has received the Spirit of Enterprise Award from the U.S. Chamber of Commerce. The award recognizes members of Congress who have earned a 70% or higher pro-business score on the Chamber's How They Voted legislative scorecard. This year, the Chamber has expanded the factors used to include bipartisanship and leadership.



HSHS St. Anthony's Memorial Hospital's Wound Healing Center has been awarded the Center of Distinction by Healogics, the nation's largest provider of advanced wound care services.

Josh Mathis, Residence Director at **Willowbrook of Effingham** has obtained his Certified Montessori Dementia Care Professional (CMDCP) Certification from the International Council of Certified Dementia Practitioners. CMDCP is the highest standard in Montessori Dementia Care knowledge and experience.

The Effingham County Cultural Center and Museum Association has been awarded certificates

of achievement by the American Association for State and Local History in their process toward achievement in the AASLH Standards and Excellence Program for History Organizations's museum accreditation readiness.. To date, the museum has met criteria for Bronze certification in three sets of standards - mission, audience and interpretation.

Effingham County Chamber of Commerce Membership Director Becky Brown is the recipient of the Dana Ketterling Lifetime Sales Achievement Award from the Association of Chamber of Commerce Executives. Brown was recognized at the Bronze Level for accumulating 500 transactions or \$175,000 in membership sales.



Dieterich Business Association has announced their 2020 Scholarship Recipients: Molly Niemerg and Colin Hartke.

Chamber Ambassador Debbie Womack was recognized as 2020 Ambassador of the Quarter for the first quarter of 2020. Ambassador of the Quarter is a new recognition program based on the Chamber member engagement level by an Ambassador. Womack received personal recognition and her employer, **First National Bank of Waterloo**, also received Chamber promotional opportunities.





YBNext presented a check for \$500 to Effingham Child Development Center from proceeds of their recent Welcome Back event.



YBNext 2020-2021 Officers

Back (L-R) Michael Brummer - VP, Daniel Bierman - Ex-Officio, Vince Higgs - President, Courtney Mersman - Secretary, Callie Vogt - Membership Chair

Front (L-R) Kristen Braun - Professional Development, Chelsey Koester - Marketing Chair, Monica Schumacher - Treasurer, Sami Hoedebecke - Charitable Committee, Jessie Koester - Social Chair



Downtown Effingham Business Group Cookies for Cops

Effingham County Chamber of Commerce

LOCAL LINK



- Delivered locally to individuals, members and non-members **FREE!**
- Marketing Opportunities
- Featured Job Postings
- Local Business Updates

Contact Kristin Probst for more information at kprobst@effinghamcountychamber.com.

Sponsor a new member.
Grow **your** Chamber.
Support the Community.

Pay It FORWARD

EFFINGHAM COUNTY CHAMBER OF COMMERCE
Local Businesses Supporting Local Business

Pay It Forward is an exciting opportunity for YOU to sponsor a Tier 1 membership. Do you work with a charitable non-profit organization? Know of a start-up entrepreneur? Work with a small business? What a great way to introduce them to all the valuable resources, programs & services offered by the Chamber just by sponsoring them as a new member of the Chamber family!

Our Capital Investors have the opportunity to be a Pay It Forward Partner, which is included in their investment. THANK YOU to Dieterich Bank for being a FIRST Pay It Forward Partner by sponsoring 100+ Women Who Care of Effingham.

Due to the Covid-19, we are all learning new ways to keep our businesses operating, help our employees, serve our customers and care about our community. I can't think of a better way to support an organization, entrepreneur or business – Be a Pay It Forward Sponsor!! It's easy to do – just contact Becky Brown, Membership Director with the name of the organization, entrepreneur or business you would like to sponsor and she will do the rest.

"We are proud to be members of the Effingham County Chamber of Commerce! Thank you to Dieterich Bank for sponsoring our membership. We are so thankful for you!"

-100 Women Who Care

Effingham County Chamber of Commerce
903 N. Keller Dr.
Effingham, IL 62401
www.effinghamcountychamber.com

2020 Scholarship Recipients

2020 EXCLUSIVE SPONSORS

HSHS St. Anthony's Memorial Hospital
J & J Ventures Gaming LLC
Siemer Milling Company
B & L Machine & Design

2020 PLATINUM SPONSORS

BK Resources
Effingham New Car Dealers Association
Koerner Distributor Inc.
John Boos & Co.

2020 GOLD SPONSORS

Agracel, Inc.
Land of Lincoln Credit Union
Pagel Silver Dollar Lanes
Whitney Roofing Inc

2020 SILVER SPONSORS

Cancer Care Specialists of IL
Coldwell Banker First Realty
Farm Credit Services of Illinois
Ken & Norma Lansing
Lustig Custom Cabinet Co.
Stillwater Enterprises Inc.
Taylor Law Offices, P.C.
Tom Henderson-State Farm
Weber Optiks

2020 BRONZE SPONSORS

Weber's Clothing
Weber's Jewelry
Frank & Anne Kabbes
Lakeside Services



Kourtney Cordes, Madiline Stortzum, EHS, Taylor Hartke, Sarah Schabbing, Lee Hardiek, Danielle Everett, Devin Flach, Emma Ruholl, THS. Not Pictured: Tate Niebrugge, EHS, Madeline Thoele, THS



Do you need help starting or growing your business?

The Chamber's Business Outreach Center is here to help with information, assistance and services for individuals interested in starting a business or business owners ready to grow their business.

We provide access to resources critical to making smart business decisions.

Our team of professional, knowledgeable and experienced business mentors are available to offer general advice on business planning, management and growth.

Business Plan Development
Financial and Market Analysis and Planning
Marketing Plan Assistance



Put your expertise to work as a Business Mentor. Contact Norma Lansing at 217.342.4147 to learn more.

Need help bringing your business ideas into focus? Contact the Chamber office at 903 North Keller Drive or call 217.342.4147 to obtain an intake form.

Make plans to be a part!

Calendar of Events

Sept

- 4th - 12:00 PM: **FIRST FRIDAY**
Thelma Keller Convention Center
- 10th - 5-7:00 PM: **BUSINESS AFTER HOURS**
Pyramid Marble & Granite
- 24th - 5-7:00 PM: **BUSINESS AFTER HOURS**
McDevitt, Osteen, Chojnicki & Deters, LLC
- 25th - 5:30PM- **FALL DRAW**
Virtual
- 29th - 5:30PM- **TOP COMMUNITY LEADERS UNDER 40 AWARDS**
Thelma Keller Convention Center

Oct

- 2nd - 7:30 AM: **FIRST FRIDAY AM**
Thelma Keller Convention Center
- 2nd - 12:00 PM: **50th ANNUAL CHAMBER GOLF OUTING**
Effingham Country Club
- 8th - 5-7:00 PM: **BUSINESS AFTER HOURS**
Wortman Printing
- 14th - 7:30AM: **COFFEE & CONNECTIONS**
Heartland Human Services
- 15th - **CHAMBER RADIO DAYS - WXF**
Premier Broadcasting, 206 S. Willow St.

FRIDAY, OCT. 2nd

EFFINGHAM

COUNTRY CLUB

\$150 per
Golfer!

33rd ANNUAL



EFFINGHAM COUNTY
CHAMBER OF COMMERCE

GOLF OUTING

2020

Register at effinghamcountychamber.com or call
217-342-4147.

SPONSORSHIP OPPORTUNITIES AVAILABLE!



Learn More About the
**BUSINESS
OUTREACH
CENTER**

See page 20 for details



(217) 342-4147 | EffinghamCountyChamber.com

903 N. Keller Drive, PO Box 643
Effingham, IL 62401