



NETWORK

Effingham County Chamber of Commerce

FEBRUARY 2021

TACKLING Effingham County's
CHILDCARE CRISIS



EFFINGHAM COUNTY CHAMBER OF COMMERCE

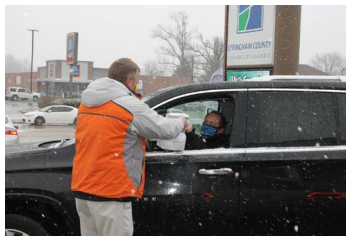
Engaging Business and Community



**CHAMBER OF THE YEAR
2020 WINNER**

We are proud and honored to be the **2020 National Chamber of the Year!** An award like this doesn't happen without the dedication of a great management team, including the Board of Directors, Staff, amazing volunteers, and a dedicated and supportive membership. **YOU** are the reason we received this treasured award!

We celebrated all month long in January and appreciate the member turnout for our drive thru food events, even on the snowiest of days! January 2021 was recognized by both the City and the County as 'Effingham County Chamber of Commerce of the Year' Month, with the County naming January 27 as 'Effingham County Chamber of Commerce Founders Day'.



THANK YOU TO OUR CHAMBER OF THE YEAR EVENT SPONSORS!



LETTER FROM THE PRESIDENT

What do you value about your Chamber membership?

- Do you value the business connections that allow you to meet potential customers and business acquaintances?
- Do you value the programs that engage young professionals, assist entrepreneurs in establishing a business, encourage shop local efforts to grow the community?
- Do you value the advocacy efforts that draw attention to government regulations that are harmful to business?
- Do you value the chamber's leadership in improving business opportunities and quality of life initiatives in Effingham County?
- Do you value the opportunities available to promote your business, showcase your products and services, broadcast your job openings and increase interest in your company growth?
- Do you value professional development programs for you and your employees like HYPE webinars, Peer to Peer Networks, YBNext, our young professionals' network) and other special training with national experts?

The Effingham County Chamber of Commerce's mission to strengthen member businesses and stimulate the regional economy is grounded in our ability to serve as the voice of business, a catalyst for economic growth, a champion for a strong community, and to identify the issues and challenges that affect our businesses' ability to prosper and grow.

As we take a closer look at the child care crisis that exists in Effingham County and elsewhere

around the country in this issue of Network, we are reminded that challenges that impact our community come in many shapes and forms. When we understand that there are working adults that cannot fulfill their responsibilities to their employer due to lack of child care, we see the importance of this issue in our community.

Please take time to read the article and think about how you and your business can become a part of the solution to this community problem. Then reach out to the Chamber office at 217.342-4147 or to Johnna Schultz at the Effingham Public Library, 217-342-2464 to learn more.

The value of your Chamber membership becomes much more important when you dig deeper into what the Chamber is all about. Read our print publications, email blasts, visit our website, social media posts and other marketing avenues to get the most up-to-date information on what we're working on.

Your Success is our Business!



Norma Lansing, President & CEO

nlansing@effinghamcountychamber.com

217-342-4147

THANK YOU TO OUR CAPITAL INVESTORS



MEET THE 2021 BOARD OF DIRECTORS



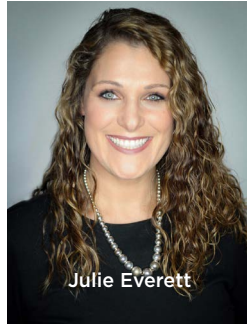
Jeff Speer
RE/MAX Key Advantage

Board Chair



Christopher Swingler
Vantage Outsourcing

Chair Elect



Julie Everett

**VP Membership
Development**



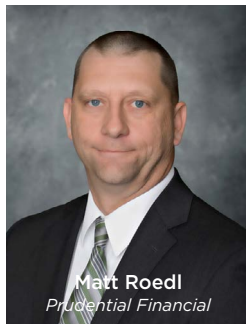
John Wright
Wright's Furniture & Flooring

**VP Business
Development**



Jamie Stang Ellis
Stang Arts Studio

**VP Community
Development**



Matt Roedel
Prudential Financial

**VP Workforce
Development**



Matt Cekander
Doehring, Winders & Co. LLP

Treasurer



Travis Bushue
Bushue HR Inc.

Secretary

2021 BOARD MEMBERS

Jay Buehnerkemper, First Mid Bank & Trust; Rachel Collins, Stevens Industries, Inc.;
Mark Doan, Effingham CUSD #40; Anthony Hecht, Dan Hecht Chevrolet-Toyota;
Dr. Ryan Jennings, HSHS St. Anthony's Memorial Hospital; Joe Knabe, Al's Tire Mart & Electronics;
Kevin Swan, Consolidated Communications; Kara Wade, Taylor Law Offices

2021 EX-OFFICIO BOARD OF DIRECTORS

Sasha Althoff, Downtown Effingham Business Group; City of Effingham;
Dawn Burrow, Altamont Chamber of Commerce; Rich Hartke, Teutopolis Community for Progress;
Vince Higgs, YBNext; Higgs Welding, LLC; Jim Niemann, Effingham County Board;
Sara Ruholl, Downtown Effingham Business Group; The Beanstalk Boutique;
Mike Schutzbach, City of Effingham; Courtney Yockey, Effingham Regional Growth Alliance

GAIN VISIBILITY AND MAKE CONNECTIONS IN 2021

No matter what your business or organizational goals are, the Chamber is here to help you create more meaningful connections, build professional clout and develop a variety of skills. Whether virtually or in person, there are many opportunities to build your network through the Chamber.

Peer to Peer Networks New for 2021!



"Your peer group are people with similar dreams, goals and worldviews. They are people who will push you in exchange for being pushed, who will raise the bar and tell you the truth. They're not in your business, but they're in your shoes"

-Seth Godin

Small Business Owners Group - a place where small business owners/managers can discuss challenges, share solutions and work as a back-office consortium.

HR Roundtable - are you responsible for the HR

functions of your business? At roundtable meetings, you can openly discuss HR topics from the hiring and firing process, employee benefits, labor laws and more.

Women in Business - through networking, mentoring and education women can find opportunities for growth and celebrate achievements. This group's major initiative is in human trafficking awareness. 2021 activities will include monthly online interviews and discussions as well as other issues businesswomen face on a daily basis.

Other Peer to Peer groups in consideration are sales and marketing, technology, customer engagement and volunteerism/community service. If you are interested in participating in one of these groups, please contact the Chamber office at 217.342.4147.



Heighten Your Professional Edge with our monthly webinar series, new for 2021! Held on the 3rd Thursday of the month at 9 a.m., HYPE presentations will focus on building & strengthening your business skills & knowledge. Check out monthly topics on the Chamber events calendar.

Thanks to Vantage Outsourcing, our 2021 HYPE sponsor for making these webinars FREE for all Chamber members!



Effingham Area Connect Mobile App

We are preparing to launch the Effingham Area Connect mobile app, a community-wide mobile solution to all things Effingham County right at your fingertips! This mobile resource will provide locals, visitors and people relocating to our community up to date information on local businesses, community services, events, job openings, amenities and so much more.

All Chamber members will receive a complimentary business listing including being able to call your business directly from the app. Opportunities to upgrade your listing with video and static images, map and GPS integration, text, and links to your social media sites, website and direct email are available at affordable prices.

This will be an incredible resource and service guide for those visiting our community with multi-cultural needs and language barriers.

For more information, please call Norma Lansing, Chamber President & CEO, at 217.342.4147 or email nlansing@effinghamcountychamber.com.



ASK AN EXPERT

Can employers require employees to get the COVID vaccine?

As COVID-19 vaccines become available, employers are asking if they can require employees to get vaccinated, and what they can do if employees refuse.

Employers may require COVID-19 vaccinations, but policies must comply with the Americans with Disabilities Act, Title VII of the Civil Rights Act and other workplace laws. Indeed, an employee with a religious objection or a disability may need to be excused from the mandate and/or otherwise accommodated, and if the employee is in a union, employers may need to bargain and reach an agreement with the union before mandating vaccines.

Under the ADA and Title VII, if a vaccination requirement screens out a worker with a disability

or based on a religious belief, employers must show that the unvaccinated employee would pose a direct threat due to a significant risk of substantial harm to the health or safety of the individual or others in the workplace that cannot be eliminated or reduced by reasonable accommodation, such as allowing the employee to work remotely or take a leave of absence. But, this does not mean an individual can be automatically terminated.

Employers will need to determine if any other rights apply under other federal, state and local laws, such as the Family and Medical Leave Act.

– Scott Cruz

Employment & Labor Group,
Greensfelder, Hemker & Gale, P.C.

200 W. Madison St., Ste 3300 • Chicago, IL 60606
312-345-5008 • www.greensfelder.com

Like Ask-An-Expert? Chamber members are invited to submit a column on a subject of their choosing. The article cannot be a solicitation for your business, but rather a sharing of topics, tips, and trends relevant to current business needs. If you have questions, please contact Nicole at 217.342.4147.



Greensfelder

Effingham Chamber Members
can count on Greensfelder's attorneys
to help navigate the employment and
human resources situations that affect
their businesses every day.



Scott Cruz
Employment & Labor Group
312-345-5008
scruz@greensfelder.com

Greensfelder, Hemker, & Gale, P.C. | www.greensfelder.com

Chicago
200 W. Madison St.,
Suite 3300
Chicago, IL 60606

Southern Illinois
12 Wolf Creek Drive,
Suite 100
Belleville, IL 62226

St. Louis
10 S. Broadway,
Suite 2000
St. Louis, MO 63102



Chamber Sponsorship Program – New for 2021!
Sponsorships provide increased value and visibility for your business in today's competitive market. Business and community leaders recognize and appreciate companies that help and support the business community via the Chamber and its initiatives to create a healthy business climate. Whatever your business, we offer creative opportunities designed to promote your business. To learn more, contact Nicole Morrison, Director of Marketing & Communications, at 217.342.4147 or nmorrison@effingham-countychamber.com.



More choices. More rewards.

New best-in-class credit card options for you and your business are now available.

Learn more at
midlandsb.com/personal-credit-cards
midlandsb.com/business-credit-cards



Midland 
States Bank®

Effingham Main Banking Center
110 S. 5th Street | Effingham, IL 62401

855-696-4352

Member FDIC

CALLED to CARE.



HSHS
St. Anthony's
Memorial Hospital



Thank a health care hero at stanthonyshospital.org/calledtocare.

SAVE THE DATE!

FRIDAY, MAY 21
EFFINGHAM COUNTRY CLUB

54TH ANNUAL



EFFINGHAM COUNTY
CHAMBER OF COMMERCE

GOLF OUTING

2021

Radio Days 2021

APRIL 15
95.7 WCRC

Financial Solutions for every step along the way.



First Mid

BANKING | INSURANCE
WEALTH MANAGEMENT

First Mid locations in Effingham County:

Altamont 101 W. Washington | 618-483-5151

Effingham 902 N. Keller Dr. | 217-342-6111

Learn more about us at www.firstmid.com.



**Offering 1GIG
\$85/Month For LIFE**

111 N Commercial Drive
Teutopolis, IL 62467

Contact Us Today!

(217) 367-1578

info@americanfibernet.com
AmericanFiberNetwork.com

Your local, family owned and operated internet provider!



ARE YOU LOOKING FOR A SPECIAL GIFT? WE HAVE CUTTING BOARDS FOR EVERY OCCASION!

- ✓ Corporate Events
- ✓ Employee Appreciation
- ✓ Holiday Gifts
- ✓ Retirement Parties
- ✓ Wedding Gifts
- ✓ Much More!

We offer special pricing on large order quantities. Contact us today and ask how we can help you handcraft the perfect gift.



Personalize Your Gifts With
Custom Laser Engraving!

Boos
Block

JOHN BOOS FACTORY
SHOWROOM
& OUTLET

1703 AVENUE OF MID-AMERICA
EFFINGHAM, IL 62401 • (217) 347-7790
SHOP.BUTCHERBLOCKSPECIALIST.COM

EXPAND YOUR BUSINESS' MARKETING PLAN

From Small Town Shops to Hospitals, Banks to Colleges, the Chamber's "Network" & "E-Network" Magazines get tremendous exposure in Effingham County!

When you advertise with us...

- new customers are attracted
- store traffic is generated
- employee morale is boosted

**Affordable rates & sizes
available!**

Let Nicole help you grow your brand with the community & Chamber Members! Use your Chamber Credit or marketing budget in one of our next issues!

**Our April issue will be
focused on Education!**

217.342.4147

nmorrison@effinghamcountychamber.com



TACKLING Effingham County's CHILDCARE CRISIS



Businesses need employees who are job-ready, team-capable and well-prepared. In most U.S. families, both parents work outside the home and rely on access to child care for their young families so that they can advance their careers and make a good living. When child care is not readily available, workers' time, productivity, and careers are diminished.

The economic consequences of inadequate childcare are large and long-lasting for young families, employers and the community with lost workforce earnings, reduced productivity and lower tax revenues.

Child care has been an ongoing workforce issue in Effingham County and there are instances where people have not been able to work due to the lack of child care. Day care providers receive multiple calls daily in search of child care. Many have stopped adding names to their already lengthy waiting lists.

The COVID-19 Pandemic has increased the challenges of finding adequate child care as daycare facilities were forced to reduce the number of children they can accommodate and at the same time, increase the costs of providing child care by increasing staffing and social distancing, safety requirements.

In 2019, a local group came together to begin looking for ways to resolve the child care needs of Effingham County. A plan for a children's community center was outlined that would house independently operated child related businesses

and related agencies and services and expand the number of full-time slots needed to help with increased child care options for local families.

With the onset of COVID, those plans were set aside as individual day care facilities and service agencies were tasked to comply with new capacity guidelines. But, the idea isn't dead and will continue to be pursued.

More recently, Illinois Action for Children has organized a year-long planning process to assist Effingham County in creating a comprehensive, community-based plan to address the lack of equitable access to high-quality early childhood care and education.

The initiative is based on data collected over 20 years by Illinois Early Childhood Asset Map that has consistently shown high unmet needs for Early Childhood Care and Education in certain communities and counties.

The project is designed to expand access and develop new high-quality programs, increase support for community systems and applicants for state and federal funding as well as provide communities with large slot gaps in the systems knowledge, community data and planning capacity to prepare for applying for state and federal funding.

According to Illinois Action for Children, Effingham County has 239 infants and toddlers and 333 preschoolers who fall in the "slot gap" and lack access to high-quality Early Childhood Care and Education.

There are twenty Family Child Care programs and seven licensed child care centers in the city of Effingham

Statistics Provided by Project Child which administers the Illinois Department of Human Services (IDHS) Child Care Assistance Program (CCAP) to families in southern Illinois. County-wide data not available at this time.

At the forefront of Effingham County's child care initiative are Shelli French, Director of the Effingham Child Development Center; Meghan Rewers, Director of the Crisis Nursery of Effingham County; Courtney Hatcher, Provider Recruitment/Retention Specialist with Project Child; & Johnna Schultz, Assistant Director of Effingham Public Library.

For the past 16 years, Shelli French has been serving as Center Director of the **Effingham Child Development Center**, also known as ECDC. ECDC is a non-profit licensed child care center that has been serving children six weeks to 13 years since 1972.

How would you describe the child care situation in Effingham County now as compared to a year ago?

"Families are still desperate to find child care in our County. I have received so many calls from parents that are unable to start new jobs, because they cannot find child care. I can't help but think how a lack of workers will begin to hurt all industries. I have had foster families tell me they are unable to take in more children, because they cannot find child care. I worry about children being lost in the system versus living with a stable foster family." French said.

"Our area also suffers from a shortage of qualified teachers for child care centers. One reason is that the field of child care is often lower paying and lacks benefits. For many years there have been few to none scholarships, funding streams or sign on bonuses to encourage people to go into the childcare field. Everyone agrees there is a shortage of ECE teachers and it is a need in our community, we just need to take the next step and move forward."

"Another issue that has come to light is that DCFS changed the requirements for teaching staff, so someone that was qualified as a teacher at one Center cannot make a lateral move to a new Center. They would find themselves no longer teacher qualified and needing to take more college credits. There are people who absolutely love the ECE field and were called to this line of work. We need our community to recognize the ECE field as essential and provide scholarships to encourage people to pursue this career field."

What can businesses do to support the child care needs of the community?

French continued, "Our area business can help by offering scholarships in the Early Childhood Care and Education field (ECE). Our High School could partner with our local Community College to offer dual credit classes in the ECE field. I feel child care is a huge community need in Effingham County and it is time for our community to get serious and come together to find the solution."

Meghan Rewers is a licensed clinical social worker and Executive Director for **Crisis Nursery of Effingham County**. Crisis Nursery's mission is to protect and prevent childhood trauma, abuse and neglect through the provision of a free 24/7 emergency shelter care program for children birth through six years of age.

"Effingham County is moving in the right direction! Our community is continuing the conversation and raising awareness for this ongoing issue, which is GREAT! We also had a new daycare open (MKU) which is helping by providing more licensed child care slots in our county. Yay! This is a great thing for sure." Rewers said.

How can businesses help?

"I think we are in the beginning states of a paradigm shift in our community when it comes to understanding and valuing our child care professionals (in-home and center-based programs). Businesses can continue to raise awareness for the importance of childcare and can look for ways they can invest in our local child care system."



A March 2020 report by Ready Nation, a nonprofit network of business leaders across the country, reported that insufficient child care was costing Illinois workers, their employers and economy nearly \$2.5 billion a year — these costs were specific to infant/toddler care, which is particularly scarce.

“Standard employee benefits usually come in the form of paid-time-off and health insurance, but I think it will be great to see businesses consider offering support for child care as well. Through our planning with the Illinois Action for Children process, I believe we will have tangible constructs for our community and businesses in our community to invest in very soon. That’s the core objective of this initiative so we can identify the most impactful actions we can take as a community to address our local childcare issue.” , Rewers commented.

On a personal note, Rewers is a parent raising 2 young children in our community. She notes that child care professionals are much more than child care professionals to her family. They are helping raise Rewers’ family and are part of her family. Child care professionals are there when parents cannot be and they are doing some of the most important work there is. They need to be supported, appreciated and invested in. In doing so we are investing in our communities families and the future of our community.

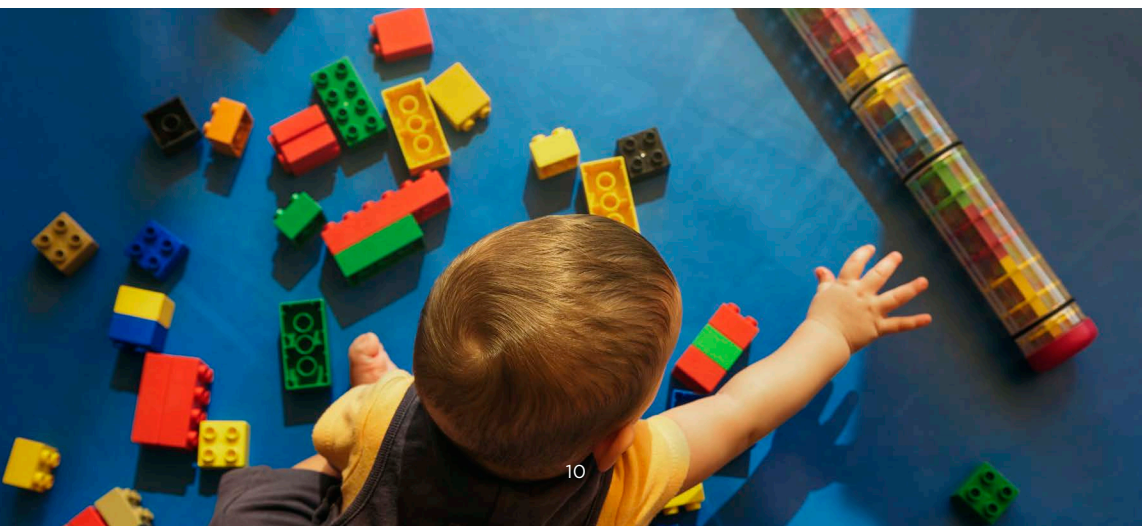
Courtney Hatcher is the Referral/Recruitment/Retainment Specialist at **Project CHILD** in Mt. Vernon. She not only helps families find a child care program but helps new programs open and existing programs remain open through various resources such as training, funding and technical assistance. Prior to working at Project CHILD, Courtney was a licensed family child care provider for 13 years in Clay County.

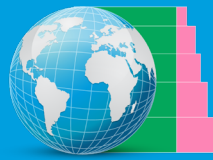
Hatcher notes that while there is movement in the right direction in Effingham County, the lack of child care for children 0-5 is still considered a crisis and there is still much to be done to fill the gap in child care. When a community is lacking available child care, many aspects suffer causing a rippling effect throughout the entire county.

Johnna Schultz is the Assistant Director at **Effingham Public Library**, a position she has held for four years. Schultz believes that the library’s primary role is to be a catalyst within the community. The library should always be listening and then responding to the needs of the community either through resources or experiences - building these connections, especially in rural, small libraries - provides further opportunities for the community and its individuals to thrive. Schultz is the connector between our community stakeholders and the Illinois Action for Children.

She sees the growing conversation around child care concerns a positive step for the community. The library has hosted classes on How to Open & Maintain a Licensed Daycare classes every other month with Courtney Hatcher from Project Child.

Schultz sees systemic challenges like this one require a comprehensive community response and notes that there is a role for everyone in our community to play: businesses, employees, child care providers, educational institutions, government and community based organizations too.





MONTESSORI
KIDS UNIVERSE™

Brad & Jordan Jansen returned to Effingham County in 2014 and were unable to find childcare for their growing family, making due for a few years with help from grandparents, relatives and friends.

When they started seeing stories in the local media about the child care situation locally, they became involved in those discussions and finally decided to take the plunge and open a child care center themselves. With no child care education or experience, they felt a franchise was the best method to pursue and chose Montessori Kids Universe because of the education style offered, family oriented atmosphere and their willingness to take a chance on a small town operation.

The franchise agreement was signed in early 2020 and space was found at 2201 Willenborg Street that was formerly occupied by hibu. The MKU architect and building specs were used to design the 10,000 square foot space.

The facility opened February 1, 2021, with space to accommodate 90 children.

Dieterich Funding New Community Center to Include Daycare

Fundraising is underway to support development of a community center that will help meet the community's demand for child care. The approximately 12,000 square foot building will house a 3,000 square foot day care facility to house 40 children, newborn to preschool.

LCC Kids in Altamont Brings Young & Old Together

The Lutheran Care Center Child Enrichment Center provides year-round high quality child care services for children from six weeks to 12 years. The curriculum nurtures the whole child, cognitively, physically, spiritually, emotionally and socially. The enrichment center is housed in a skilled care facility in Altamont.

Chamber Foundation Expands Scholarship Program

With funding set aside to honor the late Jack Graham, a local entrepreneur, the Chamber Foundation of Effingham County has targeted these funds to the highest local need. Two \$1,000 scholarships will be given to individuals studying the trades, health care and child care. The application deadline is March 12. Check the Chamber website at www.effinghamcountychamber.com for details.

This story only scratches the surface of the Child Care Crisis that exists in Effingham County. We did not even look at the costs associated with child care or the issue of early childhood education and the long-term impacts that occur when we're not adequately helping children acquire the foundation of many skills they will need to be successful in school and at work.

There's much more about to talk about! We urge you to join the discussion.

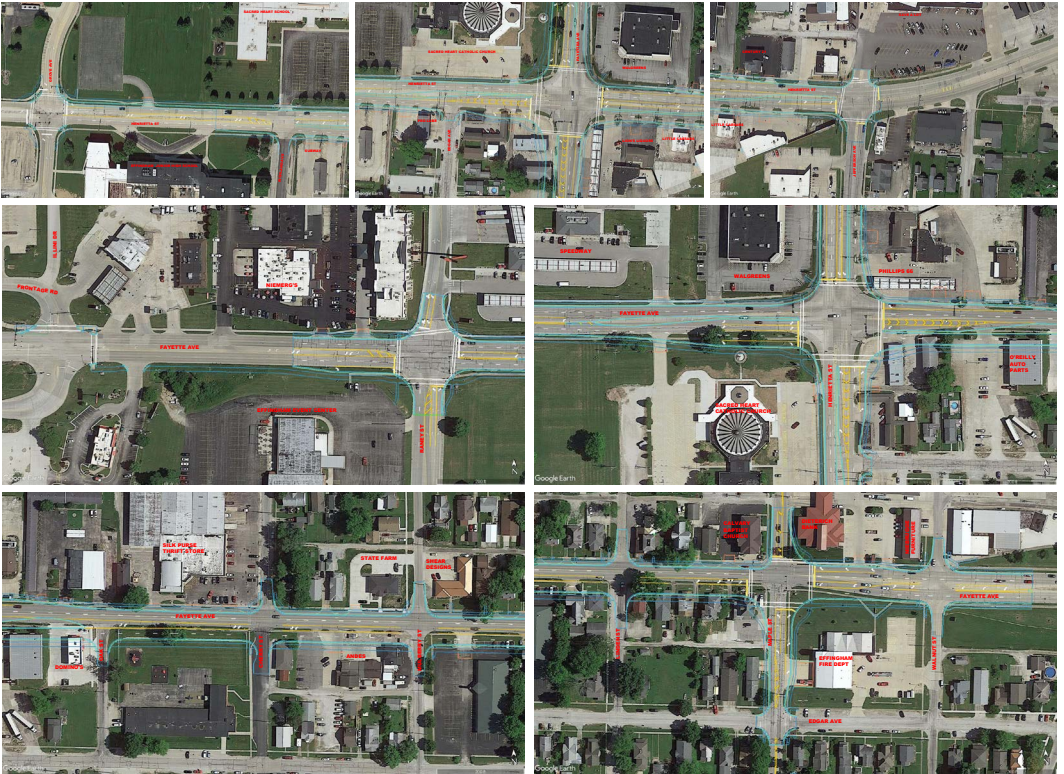
- If you have questions or to learn more about the Community based planning project , please call the Effingham Public Library at 217-342-2464 or email johnna@effinghamlibrary.org
- Project Child, www.projectchild.net
- Meghan Rewers, Crisis Nursery of Effingham County, director@crisisnurseryofeffingham.com
- Shelli French, Effingham Child Development Center, effinghamcdc@yahoo.com



ECONOMIC DEVELOPMENT UPDATE

EFFINGHAM

Fayette Avenue Reconstruction Project -The Illinois Department of Transportation has launched a new website to inform the public about the reconstruction and widening of Fayette Avenue (U.S. 40/U.S. 45/Illinois 33) through Effingham. The \$27 million project, made possible by the Rebuild Illinois capital program, will increase capacity and improve safety for both motorists and pedestrians. The project will reconstruct and widen Fayette Avenue from Illini Drive to Long Street, with two lanes in each direction with a middle turn lane, sidewalks on the north side of the road and a bike and pedestrian path on the south side. The new project website, [IDOT.illinois.gov/projects/fayette-avenue-reconstruction](https://www.idot.gov/projects/fayette-avenue-reconstruction), shares current information on the project, including the scope of improvements, land acquisition efforts, maps, illustrations, traffic impacts during construction, past study efforts and frequently asked questions and answers. A feedback form also is available for the public to interact with IDOT staff with questions and comments.



City Purchases Land for Future Development – The Effingham City Council has approved a plan to invest \$2.7 million to purchase 154 acres of land on the south end of the city for future development. The property is in both the city's Enterprise Zone and Opportunity Zone, state and federal programs that provide property tax abatement and other tax exemptions on things like investments, building materials and other costs associated with developing the land.

The City is also expanding the boundaries of the South Central Industrial TIF district to include the neighborhood surrounding South Side School, Henrietta Street including Effingham High School and Peerless of America. The primary focus of the expansion will be support for Unit 40's vocational education programs and infrastructure improvements including sewer line upgrades and road surfacing.



MONTESSORI KIDS UNIVERSE™

Montessori Kids University – Brad and Jordan Jansen opened the Montessori Kids Universe in Effingham in early 2021 to provide additional child care/preschool resources in the Effingham area. They chose the MKU educational

approach which offers a child-centered focus aligning with the child's natural ability to be explorers; preparing them for a lifelong love of learning. The facility is licensed for 90 children and currently serves infants to six year olds. MKU is located at 2201 Willenborg St., Suite 8.

Niemerg's Steak House develops drive through



Born of the desire to serve their customers, Niemerg's Steak House has added a pickup window, which is their smallest addition to date at 64 sf. Customers must pre-order from the full menu or special carry out chicken and BBQ pork meals. Hours of operation are 6 a.m. to 9 p.m. daily. Online ordering is available at NiemergsSteakhouse.com.

Effingham County Revolving Loan Fund

The Effingham County Revolving Loan Fund Program is a source of locally controlled financing to assist credit worthy existing and start-up businesses within the county. Revolving loans available through the county have a fixed interest rate. Repayment of the loans are based on the life expectancy of assets financed ranging from two to five years in length. The revolving loan program expects one hire or retention of one employee for every \$15,000 loaned. The fund currently has \$30,000 available to loan. The loan fund application is available online at the Effingham County website: co.effingham.il.us/sites/default/files/economic-development/Revolving%20Loan%20Fund%20Application.pdf.

Kala Lambert is the new Southeast Senior Regional Economic Development Manager for the Illinois Department of Commerce & Economic Opportunity. Her office is located in the Chamber building at 903 North Keller Drive in Effingham. She can be reached at kala.lambert@illinois.gov or at 217.836.8376.



DIETERICH

The Preserve – Groundbreaking was held January 29 on a new 21-lot subdivision south of Dieterich on property owned by Delbert and Geri Mundt and being developed by their children. The Preserve is located on 60 acres of nature preserve of indigenous grasses, shrubs, pine trees and wildlife. Each lot has unique lot lines conforming to the contour and natural flow of the land and ranging in size from 1.82 acres to 4.45 acres. The lots have access to EJ Water, Norris Electric, high-speed fiber and are in the Dieterich school and park systems. To learn more, visit www.thepreserve21.com.

LAKE SARA

Pearson Peninsula Park – A new 30 acre park is being developed on Lake Sara's north shore that will include multiple playgrounds, a disc golf course, ADA compliant fishing dock, new bathhouse facilities and other improvements that will be rolled out in phases over the next several years. Funding for the project includes \$400,00 from the Illinois Department of Natural Resources and from donations to Lake Sara Forever. The goal is that Phase 1 of the multi-phase peninsula improvement project will have a Memorial Day opening.



EIU Awarded Innovation Network Hub Grant – Eastern Illinois University has been awarded \$1 million from the State of Illinois to support the university's role as an Illinois Innovation Network (IIN) hub which will serve the east-central Illinois region. EIU will be working alongside Lake Land College in accelerating job creation and economic growth through groundbreaking education, research and new community partnerships. Areas of specific focus include in-demand educational and career programs like health care, manufacturing, entrepreneurship, food supply and clean energy.

meet your new marketing team.

Have your marketing needs outgrown your personnel?

A partnership with ITMG provides the resources of our entire agency, most often for less than the cost of one full-time employee.

Whether serving as your outsourced marketing team, or supporting your existing team, you get the skills of a graphic designer, copywriter, web developer, videographer, photographer, and a CMO... all in a predictable monthly package designed to fit your unique needs.

imaginethis!
MARKETING GROUP

branding & design • web development • photography & video • digital marketing • strategy

217.342.2661
thinkcreatedo.com



JOIN THE CHAMBER ENERGY PURCHASING COOPERATIVE

Combine your usage with other members to receive lower rates

- **Low, Fixed-Rate Monthly Bills**
- **Long-term Budget Stability**
- **Group Buying Power**
- **Free Energy Education and Training**
- **Customer Service Assistance**
- **Experienced Energy Professionals handle the details.**



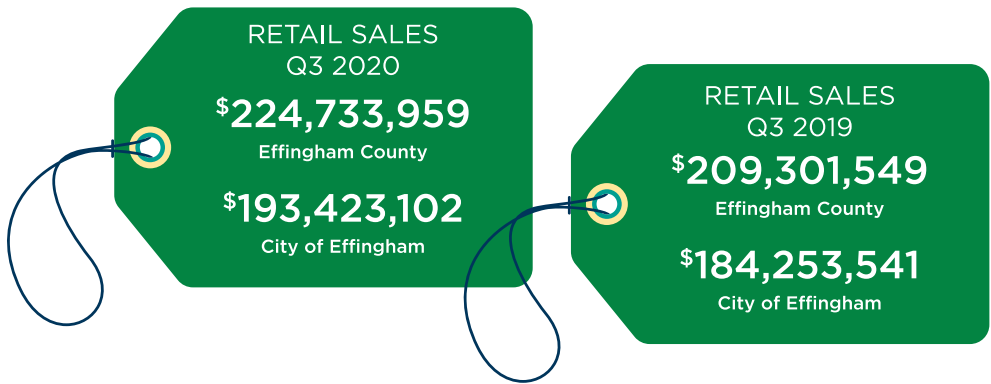
COI
ASSOCIATES
Energy Co-op
Empowering Power for Businesses & Homeowners
Energy & Sustainability Management Consultants

To learn more and schedule a **FREE** energy bill analysis, call 217-521-9400 or email shelby@cqiassociates.com.

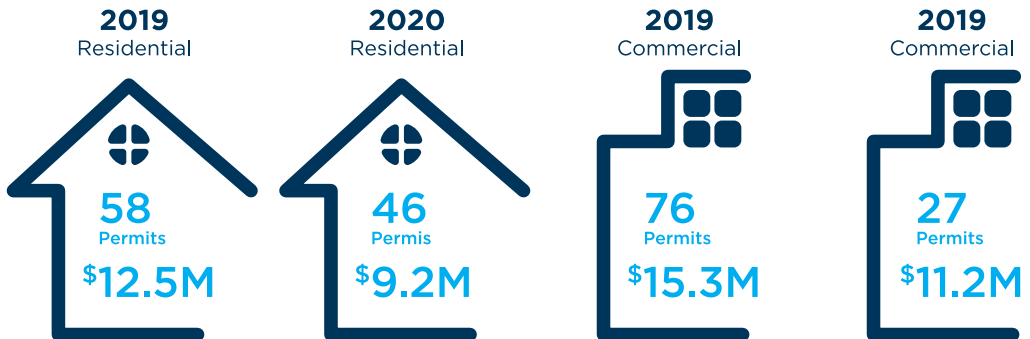
ECONOMIC INDICATORS

EFFINGHAM COUNTY LABOR MARKET

	October		November		December	
	2019	2020	2019	2020	2019	2020
Total Labor Force	19,152	18,625	18,953	18,791	19,255	18,625
Eff. Co UE Rate	2.9%	3.5%	2.7%	4.0%	2.9%	4.2%
Illinois UE	3.5%	6.5%	3.4%	6.5%	3.5%	7.5%
US UE	3.3%	6.6%	3.3%	6.4%	3.4%	6.5%



BUILDING PERMITS Effingham County



Sources: Illinois Department of Revenue, www.revenue.state.il.us; Illinois Department of Employment Security, www.lmi.ides.state.il.us; Effingham City Building Official, www.effinghamil.com; Federal Deposit Insurance Corporation, www.fdic.gov; U.S. Census Bureau, www.census.gov; and, Effingham County Treasurer, www.co.effingham.il.us/treasurer

2021-2022 DESTINATIONS
WITH THE CHAMBER

check on availability for

These Trips!

CROATIA AND ITS ISLANDS

August 13-24, 2021

**Small Ship Cruising on the
Adriatic Coast**

Optional 2-night Dubrovnik
Pre-Tour Extension

Donna Cravens, Effingham Travel Agency
(217) 342-3965
donna@effinghamtravel.com



CLASSIC DANUBE RIVER CRUISE

with Oberammergau Passion Play

6-night Danube River Cruise,
Budapest, Bratislava, Vienna,
Passau and Munich

May 30 — June 09, 2022
11 Days • 24 Meals



SPOTLIGHT ON NEW YORK CITY HOLIDAY

Greenwich Village, Wall Street,
Christmas Spectacular at Radio City Music Hall,
Statue of Liberty, Ellis Island, 9/11 Memorial,
9/11 Museum, Broadway Show

December 6 - 10, 2021
5 Days, 5 Meals: 3 Breakfasts, 2 Dinners



Visit EffinghamCountyChamber.com for more information about the Chamber Travel Program!

WELL DONE!



Sharon Robb has been named Vice President of Human Resources for **Siemer Milling Company**.



Ann Deters, CEO of **Vantage Outsourcing** has been named Vice Chair of the Illinois Chamber of Commerce and will become the State Chamber Board Chairman in June 2022.



Mark Keller has been named Executive Vice President and Director of Construction for **Agracel, Inc.**

Consolidated Communications' ProConnect product is a recipient of the 2020 Unified Communications Excellence Award by TMC's Internet Telephony magazine. ProConnect is Consolidated's unified communications solution with access to information from anywhere on any device. TMC is a global integrated media company.

HSHS St. Anthony's Memorial Hospital was awarded an "A" from Leapfrog Hospital Safety Grade, a national distinction recognizing the hospital's achievements protecting patients and providing safer health care.

ESS Clean has received two industry awards from BSCAI (Building Service Contractors Associate International), the 2020 Safety Award and Image Award. The Safety Award recognizes organizations with the best safety records and the Image Award recognizes companies that have enhanced the image of their business to the industry and to the general public.

Andy Kistler, Executive Director of **Community Support Systems** has been elected to the Illinois Association of Rehabilitation Facilities.

Washington Savings Bank and The First National Bank of Mattoon have announced an agreement that will merge First National Bank with Washington Savings Bank. First National Bank has two banking facilities in Mattoon and one in Lerna. The transaction has been approved by each bank's board of directors and is expected to close in the third quarter of 2021.

J & J Gaming LLC and **J & J Ventures Amusements LLC** has acquired all gaming and amusement operations of Awesome Hand Services LLC and A.H. Entertainers, a division of A.H. Management Group, located in Rolling Meadows, IL and a leading supplier of technology, marketing and customer service. With this purchase, J & J now serves nearly 3,000 locations.

If you have news you want to share with the Chamber membership on special awards, recognition, employee promotions, etc., please e-mail the information to: Nicole Morrison at nmorrison@effinghamcountychamber.com

Who's New?

Adara Jenne is the new General Manager for **La Quinta Inn & Suites**.

Midland States Bank welcomes their new Marketing Manager, Ali Etter.

Mike Janis has been named the interim President & CEO for **HSHS St. Anthony's Memorial Hospital**.

Kevin Ruholl has been named Quality Control Manager at **CCI RediMix**.

Stephanie Smith is the new Senior Community Development Manager for the **American Cancer Society**.

Changes & Notes

F.E. Moran Security Solutions has been purchased by Securitas Electronic Security, Inc. F.E. Moran is a top 30 alarm monitoring and electronic security systems integration company.

Doehring Winders & Co. has recently updated their URL to the new '.CPA' domain, and shortened their web address. The new web address is www.DW.cpa.

Join the

Chamber Texting

Program Today!



Join Chamber's texting program and bring important messages to your phone with reminders about Chamber events and community information. To sign up, text your name and cell phone number to Nicole Morrison **(618) 795-8554**.

Member Milestones

Pro Rehab
1 year

Stang Arts
10 years

Lakeside Services
20 years

Hartke Financial
20 years

Family Life Center
25 years

Elaine Buehnerkemper,
Vice President of Customer Service for **Washington Savings Bank** was recently recognized for 40 years of service.

Reaching a Milestone Anniversary as a business takes hard work, passion and a level of commitment not many can understand. The Chamber would like to recognize your education and business success. Are you celebrating a milestone anniversary in business? 5, 10, 15 years or more? Do you have employees with over 25 years of service to your organization? We take pride in seeing our members succeed. To share your milestone anniversary with us, please contact Nicole Morrison, nmorrison@effinghamcountychamber.com, or call 217.342.4147.

Employee FIND YOUR NEXT GREAT Career

As a member of the Effingham County Chamber of Commerce, local businesses have access to post job openings on our website! The goal of this complimentary service is to help bring great employees and employers together within the community!

Email job listings to jniemerg@effinghamcountychamber.com.

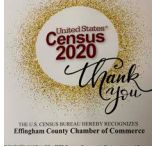


CELEBRATIONS



Seven Seals Award - Illinois Employer Support of the Guard and Reserve (ESGR), an office of the Department of Defense, has awarded the Seven Seals Award to the Effingham County Chamber of Commerce for meritorious leadership and initiative in support of the men and women who serve America in the Guard and Reserve.

US Census Partner Award - The U.S. Census Bureau has awarded the Effingham County Chamber of Commerce a Certificate of Thanks for the Chamber's efforts as a partner during the Decennial Census. The Chicago Region exceeded the National Self-Response Rate of 67% and had the highest self-response rate among all regions, of 69.8%.



Chamber Ambassador **Steve Will** was recognized as 2020 Ambassador of the Quarter for the fourth quarter of 2020. Ambassador of the Quarter recognition is based on the member engagement level of an Ambassador. Will received personal recognition and his employer, Dieterich Bank, also received Chamber promotional opportunities.



2021 Excellence in Business recipients



Excellence in Business recipients are selected based on the outstanding contributions they make to our communities and the local economy through their continued growth, innovation and community support, including investment in improved facilities, increased employment and innovation in business practices and processes as well as exceptional community involvement and employee volunteerism.



Sasha Althoff/Sara Ruholl - 2021 Downtown Effingham Business Group Co-Chairs Althoff works for the City of Effingham and Ruholl is the owner of The Beanstalk Boutique

NEW MEMBERS



Wirth Computer Repair



Siner Auto Detailing



Montessori Kids Universe



FTS Sound

NEW MEMBERS

The Chamber encourages all members to do business with each other. The following companies and organizations have made an important investment in their business by joining the chamber. Please consider them for your personal and professional needs. To find a complete list of Chamber members, visit the Business Directory online at EffinghamCountyChamber.com.

SIR INVESTIGATIONS LLC

Jimmy Hinkle & Brian Marxman, Owners
205 S First St., Fairfield
(618) 553-2505
www.sirinvestigations.com
Security, Investigations & Process Services

MONTESSORI KIDS UNIVERSE

Brad Jansen, Owner
2201 Willenborg St, Ste. 8, Effingham
(217) 292-1880
MontessoriKidsUniverse.com/effingham
Daycare

WIRTH COMPUTER REPAIR

Martyn Wirth, Owner
303 N Church St, Newton
(618) 292-1002
Computer Repairs

FTSSOUND

Kevin Calkins, Owner
201 W Jefferson, Ste. 4, Effingham
(217) 343-0906
Video & Podcasting Production Services
Jeff Bloemker, Bank of Hillsboro

SINER AUTO DETAILING

Parker Siner, Owner/Certified Detailer
900 N Oakwood St, Effingham
(217) 821-5900
Detailing

FULL CIRCLE REALTY

Brian Henning, Managing Broker/Owner
123 E Jefferson, Effingham
(217) 821-3338
www.fcrl.com
Real Estate

Referred by: Mandy Henning, Midland States Bank

GREENSFELDER, HEMKER & GALE, P.C.

Scott Cruz, Esq., Officer, Labor & Employment
200 W Madison St, Ste. 3300, Chicago
(312) 345-5008
Attorneys

THE ROYAL SCHOOL OF COSMETOLOGY

Chandra Niemerg, Owner
401 W National Ave, Ste. C, Effingham
(217) 347-3991
www.royalschoolofcosmetology.com

BIG PAPA'S

Steve Kinkelaar, Owner
101 E Jefferson, Effingham
(217) 690-4245
Bar/Lounge

*Referred by: Jay Buehnerkemper,
First Mid Bank & Trust*

SCHMIDTY'S AUTO GLASS

Brett Schmidt, Owner
800 Wooden Shoe Drive, Teutopolis
(217) 690-6232
Glass/Automobile

THANK YOU FOR YOUR SUPPORT!

Webinar & Event sponsors: Leisure Times, Wabash Communications,
Vantage Outsourcing - Annual HYPE sponsor

Coffee & Connections sponsors: Effingham Performance Center,
Land of Lincoln Credit Union - Annual Coffee & Connections Sponsor

CALENDAR OF EVENTS

MARCH

12

Scholarship Program
Application Deadline

18

event: 9a-10a
HYPE Webinar Series

APRIL

2-5

Chamber Office Closed

event: 12p-1p
First Friday Luncheon
@ Keller Convention Center

9

event: 4p
Ribbon Cutting - Pro Rehab

event: 9a-10a
HYPE Webinar Series

14

event: 7:30a-9a
Coffee & Connections
@ The Equity

event: 9a-3p
Spring Chamber Radio Day
@ WCRC 95.7

15

event: 5p-7p
Business After Hours
@ Pyramid Marble & Granite

24

The Great Reset with Laurel Manegre,
The Pacific Institute
@ Holiday Inn
More Info Soon

30

event: 2:30p-5:15p
Car Cruise In
@ Mid America Motorworks

event: 4:30p-11:30p
**Business Recognition Gala & Norma's
Retirement Celebration**
@ Mid America Motorworks

MAY

6

**Webinar - Create Raving Fans with
Michael Angelo Caruso**
More Info Soon

7

event: 5p-7p
Business After Hours
@ Holiday Inn Express

13

event: 12p-1p
Employee Appreciation Luncheon
@ Keller Convention Center

event: 7a-6p
Chamber Golf Outing
@ Effingham Country Club

20

event: 9a-10a
HYPE Webinar Series

21



save the dates

Effingham JAM

Fall Draw

Top Community Leaders Under 40

July 23-24

September 24

September 28

**Cruise on Over
& Join Our Celebration!**



EFFINGHAM COUNTY CHAMBER OF COMMERCE
2021 Business Recognition Gala
& Norma's Retirement Celebration

SATURDAY, APRIL 24, 2021 | 4:30 PM

MID AMERICA MOTORWORKS / INSTALL DOME

2900 N 3rd Street | Effingham, IL 62401 | GATE #4

Reservation Deadline: April 5, 2021

BANQUET CELEBRATION

4:30 PM	Happy Hour/Wine Tasting/Passed Hors d'oeuvres
5:00 PM	Dinner Stations Begin
6:00 PM	Citizen of the Year Volunteer of the Year Excellence in Business Norma's Retirement
7:30 PM	Superbad - The Band & Dessert Stations

Business Attire | Wear Masks to Enter | Plans Subject to Change

2020 National Chamber of the Year



Chamber Community Scholarship Sponsors are
accepted year round! To become a sponsor, call
Becky Brown at 217.342.4147.

(217) 342-4147 | EffinghamCountyChamber.com

903 N. Keller Drive, PO Box 643
Effingham, IL 62401

