



EFFINGHAM COUNTY
CHAMBER OF COMMERCE

903 N. Keller Drive
Effingham, Illinois 62401
(217) 342-4147 | EffinghamCountyChamber.com

CONTENTS



| | |
|---|-----------|
| <i>Welcome & Introduction</i> | <i>1</i> |
| <i>Building Our Community</i> | <i>4</i> |
| <i>Growing Your Business</i> | <i>7</i> |
| <i>Strengthen Your Network</i> | <i>9</i> |
| <i>2018 Excellence in Business Awards</i> | <i>12</i> |
| <i>Business Spotlights</i> | <i>14</i> |
| <i>2017 Chamber Centennial</i> | <i>22</i> |
| <i>Our Advertisers</i> | <i>24</i> |
| <i>Chamber Membership List</i> | <i>39</i> |
| <i>Calendar of Events</i> | <i>44</i> |

2017 was an exciting and special year for the Effingham County Chamber of Commerce as we celebrated the Chamber's Centennial, were recognized as a national Chamber of the Year finalist, and led efforts to establish Impact 2030 as the next phase of the Effingham County Vision 2020 county-wide initiative.

The year was filled with activities to engage the community in our Centennial celebration, because without community and business support, we cannot serve Effingham County to the fullest. Be sure to take a look at the special center spread recapping our Centennial year.

As a Chamber of the Year finalist, we were able to review our organizational strength, key performance indicators, community impact, strategic objectives and future focus. This type of recognition occurs when business and community leaders, volunteers and Chamber staff members collaborate to create a more prosperous future for Effingham County.

As we launch the Chamber's next 100 years, we have great excitement and anticipation for what the future holds for Effingham County and the Chamber. With Impact 2030 efforts gearing up to support the future growth and development of Effingham County and new business and employment opportunities emerging, the Chamber is engaging in conversations to ensure continued growth and development in Effingham County.

We know the growth and success of the Chamber is tied to the growth and success of our businesses and our communities. It takes all of us to make Effingham County the very best place to live, work, and do business.

Best wishes for an outstanding 2018.

Norma Lansing

Effingham County Chamber of Commerce, President and CEO
Illinois Accredited Chamber Executive



Chamber of the Year Finalist!
Chamber staff with ACCE President Mick Fleming

Welcome and Introduction

It's been said that the secret to good architecture is having more than meets the eye. In reflecting over the past year with my involvement as Chairman of the Effingham County Chamber of Commerce, I found the same to be true of the design of our organization.

As we celebrated the accomplishments of the past 100 years, we were exposed to historical highlights that helped us realize the vast array of initiatives, services, resources, and business development efforts either started or implemented by the Chamber. We were taken back a century with festivities in July, especially the vintage baseball game, as well as memorabilia from companies who have been in existence as long as the Chamber. Visitors found there is more than meets the eye to an organization representing the interests of businesses and business development in Effingham County.

I was vividly reminded of the variety of involvement of the Chamber as I read through the extensive application submitted for the Association of Chamber of Commerce Executives Industry Award. It detailed numerous projects, including Manufacturing Day, initiatives resulting from a community needs survey like the TREC trail, and educational offerings to help those in business strengthen skills. With each description, I was continually reminded of the dedication of those who worked to make these visions a reality and repeatedly found myself in wonderment of the sheer volume of value that Chamber members have provided to the community.

Your Effingham County Chamber of Commerce was named one of the three finalists for the national Chamber of the Year award, which is an elite accomplishment. As I joined Norma Lansing at the interview portion of the judging in Nashville, Tennessee, I was humbled to represent the organization for such a prestigious award and proud to share our success stories. Project and initiative titles don't begin to describe the complexity of issues and projects this organization takes on day in and day out; there's more than meets the eye.

Through the centennial anniversary activities and promotions, the public gained a greater awareness of the Chamber. Our hope is that expanded awareness was also realized by our Chamber members.

Creating greater awareness of the resources, services, and opportunities available through the Chamber was a major focus for the Board of Directors. This group of engaging individuals actively represented member interests and were responsible for the organization's accomplishments in 2017. I want to personally thank each one of them for their commitment to the Chamber, their willingness to chart new paths, and their vision to meet member needs now and to plan for the future.

This group has laid the foundation for the newly established Member Care Program designed to help orient



and connect with members, especially those new to the Chamber. We feel this program not only allows the Chamber to engage its members, but it also provides an avenue for members to share comments and concerns. That type of feedback helps the Chamber keep a pulse on the needs in our community, which is where the organization provides some of its greatest value.

We hope each member takes advantage of the true value of the membership by engaging in Chamber activities, offerings, resources, and services. It's the members who make this organization what it is and what it will be. The value provided by the Chamber's leadership and administrative teams may sometimes go unsaid, but never unnoticed. Norma Lansing's experience and leadership have taken the organization to new heights and I've appreciated and benefitted from her guidance and wisdom over the past year. The time and effort of the Chamber staff keeps projects moving forward and their organization of events keeps all things running smoothly. I appreciate the huge help they've been to me during the past year.

It's been my honor to serve as the 2017 Chairman and it's been especially rewarding to serve in this centennial year. Congratulations to Matt Cekander on being selected the 2018 Chairman, under his leadership I look forward to seeing the Chamber continue to grow as members work together to strengthen the business community in Effingham County.

A handwritten signature in black ink that reads "Mel Stock".

Mel Stock

*Effingham County Chamber of Commerce
2017 Board Chairperson*

DID YOU KNOW ...

*The Chamber has an employment site?
EffinghamCountyJobs.com*

There is a Community App coming in 2018?

We will launch Community Connection, our new e-mail marketing campaign?

Our Texting Program will begin in 2018?

*You can stay up-to-date on
EffinghamCountyChamber.com?*

The Member Directory, Events, and Employment sections of The Chamber website received over 14,000 unique pageviews in 2017?

Welcome and Introduction

Welcome to 2018 – our 101st year as a Chamber!

As we begin this year, let's take a moment to thank our outgoing Board Chair Mel Stock for an excellent Centennial Year, and President Norma Lansing, who has served this Chamber for 42 years now – 30 years as President!

For the 100-Year celebration, the recently announced Regional Career Academy Plans, and a Vibrant Business Community, we are thankful.

As we look forward to 2018, we have a few New Year's Goals to focus on: (1) Create new value for our Members and Community, (2) Be a continual business reference hub for our Members, and (3) Create sustainability into our 2nd Century, for a stronger Membership base.

One of the areas we plan to explore, and for which we hope helps with these 3 goals, is a new Chamber App – coming soon.

What ideas do you have for the Chamber? What would mutually help us grow this year? Will 2018 be a year you and your co-workers increase your network and connections, for mutual longer-term strength?

We are here to serve & thankful for each of you.



Matt Cekander

*Effingham County Chamber of Commerce
2018 Board Chairperson*





2018 BOARD of DIRECTORS

Front Row (L-R): Mike Defend, Crossroads Bank; Mel Stock, Midland States Bank; Joyce Stock, Siemer Milling Company; Matt Cekander, Doebling, Winders, & Co. LLP; and Matt Roedl, Prudential Financial

Back (L-R): Nathan Nohren, Lochmeuller Group; Jeff Speer, RE/MAX Key Advantage; Rich Hartke, Teutopolis Community For Progress; Chris Tingley, Tingley Insurance Agency, Inc.; Craig Neilson, Effingham Regional Growth Alliance; Rachel Collins, Peerless of America; Cory Niebrugge, Dieterich Business Association; Darrell Lewis, Effingham Daily News and Kevin Dust, Dust & Son Auto Supplies

Not pictured: Dr. Josh Bullock, Lake Land College; Michael Kingery, Kingery Printing Company; Travis Bushue, Bushue Human Resources; Chris Swing, Vantage Outsourcing; Jim Arndt, City of Effingham; Jim Niemann, Effingham County Board; Alex Wright, YBNext and Billi Jansen, Downtown Effingham Business Group



OUR VISION

The Effingham County Chamber of Commerce is a member-driven organization that provides leadership to promote, introduce and connect people, resources and ideas to achieve business success and community growth.

OUR MISSION

For the benefit of our members, the Effingham County Chamber of Commerce serves as an advocate for business, supports and assists businesses with innovative programs and services, creates opportunities for businesses to connect and build relationships while partnering with the community to achieve lasting growth.

Gopher's Grill



PLAY PUB & GRUB

CHAMBER
Business Outreach Center
EFFINGHAM COUNTY

To Help Entrepreneurs and Business Owners Reach Their Full Potential

Whether starting a new business or ready to take your business to the next level, our team of professional, knowledgeable and experienced mentors are ready to help.

Have a need not listed? We can find someone to help. Through our leadership role in the Effingham Regional Incubator Network, we can also help find space for your business to get started. The Business Outreach Center was created in 2017 and features 12 Volunteer Business Mentors with 14 Active Clients.



CEOs, managers and owners meet monthly to engage in conversation and discuss common business problems that all businesses face on a daily basis. Whether you need to optimize your business in the area of talent, customer relations, operations or financial management, the power of the group can help you accelerate your growth, enhance your leadership or make better decisions.

As Effingham County Vision 2020 draws near, a new grassroots community initiative is forming to go beyond the vision and carry Effingham County into the future. Impact Area Teams have been formed focused to a quality environment, vibrant economy, strong community, safe and healthy people, creative learning culture and well planned community.



IMPACT 2030

SURVEY of LIFE & WORK in EFFINGHAM COUNTY

The Chamber's Workforce Readiness Task Force engaged 2,000 area residents in a wide-ranging community survey to determine the perceptions about employment opportunities, education attainment, housing, quality of life and community needs. Task teams are being formed on key areas of need and anyone interested in participating should contact Norma Lansing at nlansing@effinghamcountychamber.com.

The preliminary survey results are available on the Chamber website at EffinghamCountyChamber.com.

SURVEY OF "Life and Work in Effingham County"

EFFINGHAM REGIONAL CAREER ACADEMY Kluthe Center Expansion part of college's master plan

The Lake Land College Board of Trustees has demonstrated support for an 8-year master facilities plan that allows the college to move forward with capital projects without relying on state funding.

Phase 2 of the plan calls for the construction of the Rural Technology Development Center in Effingham. The 36,000-square-foot facility will serve as a permanent home to the **Effingham Regional Career Academy**. The center is estimated to cost \$14 million and will either be an addition or a separate building.

Career Academy Board Chairman and Altamont Unit 10 Superintendent Jeff Fritchtnitch said, "The Effingham Regional Career Academy will be a valuable asset in developing career ready and skilled employees which is needed in the Effingham County and the surrounding area. Students who complete the programs will have skills necessary to be employed in local businesses and will help to grow our already strong workforce."



JOB CREATION

For every \$10 million spent at local brick-and-mortar businesses 57 jobs are created; only 14 are created when that shopping is done online.

INVESTING IN YOUR BUSINESS AND EMPLOYEES

Get a competitive edge with exclusive training opportunities on a variety of subjects. Online & In-Person!

- McKendree University Tuition Discount – 10% discount on online courses, including an MBA
- Coggnos.com – Access to thousands of online training courses
- Dale Carnegie Training Online Course Discount – save 10%
- Access to Illinois Chamber Webinars and Seminars
- Investment in Excellence Course – The Chamber is the license holder to deliver Pacific Institute's flagship curriculum for greater results and higher performance
- Hot Topics! Cybersecurity, Sales & Marketing, Active Shooter, Social Media, Leadership
- Coming in 2018 – Soft Skills Training & Awareness Campaign, Dale Carnegie seminars, more online, on-demand training
- Access to professional certification through Chamber-sponsored training



EFFINGHAM COUNTY MANUFACTURING DAY

Exposing the next generation to opportunities available in manufacturing careers



5TH YEAR • 13 MANUFACTURERS • 300 STUDENTS • 16 SCHOOLS

“People look at manufacturing and say, oh, that’s a factory job. Factory jobs are a thing of the past. Technology jobs are currently going on in this building.”

- Joe Emmerich, *President of John Boos & Co.*



BOOST LOCAL ECONOMY

Each dollar you spend at independent businesses returns 3 times more money to your local economy than one spent out of town.



BACK TO YOUR COMMUNITY

Small businesses donate more than twice as much per sales dollar to local non-profits, events, and teams compared to big businesses.

Growing Your Business



EMPLOYER RESOURCES

Effingham County Career Fair

A recruitment event connecting employers with job seekers

Online Job Postings

*Add your job postings to EffinghamCountyChamber.com,
One of the top 3 features of our website*

Coming in 2018

*EffinghamCountyJobs.com – a free 24/7 virtual job fair
matching employers with job seekers through a
dedicated website*

HEAR FROM OUR MEMBERS ...



“The Effingham County Chamber of Commerce provides so many great opportunities to connect with people and businesses in the community. The Chamber fosters an attitude of togetherness within the business community. Business owners and representatives have a vehicle, through the Chamber, to share “best practices” that improve each company’s overall success. It’s a rewarding experience that not only provides a means for businesses to network, but also enables a personal connection with the community we serve. The Chamber has created a platform where the benefits of living in Effingham County, and the surrounding areas, are on display and celebrated providing recognition that goes statewide and beyond. As an active member, we have been able to stay up to date and involved in many activities that the Effingham community has to offer. We have learned that the more you get involved, the more you benefit.”

- Alex Hagler, Director of Manufacturing, Waupaca Foundry Effingham



GAIN VISIBILITY AND MAKE CONNECTIONS IN THE BUSINESS COMMUNITY

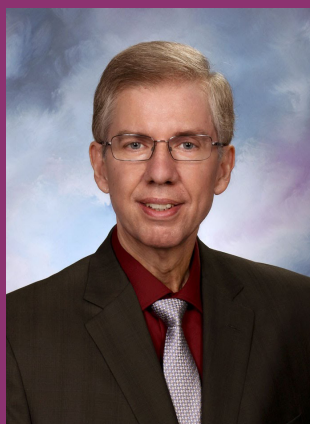
No matter what your business or organizational goals are, the Chamber is here to help you build relationships through network development, communication and enhanced awareness.



2018 CHAMBER AMBASSADORS

(L-R): Jerry Jansen, Century 21 Realty Concepts; Del Wortman, Wortman Printing Company (*2018 Ambassador Chair*); Jay Buehnerkemper, Dieterich Bank; Tonya Siner, Premier Broadcasting Company; Randy Jones, Washington Savings Bank; Jeff Muhlbachler, Muhlbachler Insurance; Jo Huskey, Enterprise Dynamics; Steve Will, Dieterich Bank; Mike Schabbing, Global Technical Systems; Jim Hecht, Dan Hecht Chevrolet-Toyota

Not pictured: Kathy Schroeder, Mary Kay Cosmetics; Greg Schumacher, Ameren Illinois; Marty Stock, Homebuilders Plus; Dan Patton, Patton Printing & Graphics; Bev Soltwedel, Soltwedel Farms



HEAR FROM OUR MEMBERS ...

“As relatively new business owners, my wife and I are proud to be affiliated with the Effingham County Chamber of Commerce. I appreciate the Chamber staff’s efforts to help new businesses grow. The entrepreneurial spirit is strong within the Chamber and I’m encouraged by the support I receive.

The Chamber staff is impressive. I’ve found them to be friendly, open, responsive, and very helpful. I especially appreciate the opportunity to meet and network with other members. It’s a privilege to be associated with and learn from other like-minded professionals as we meet the challenges of developing our business.”

- David Cox, *Principal Consultant of Employerwise, LLC*



2018 EffingHAM-JAM July 27-28, 2018

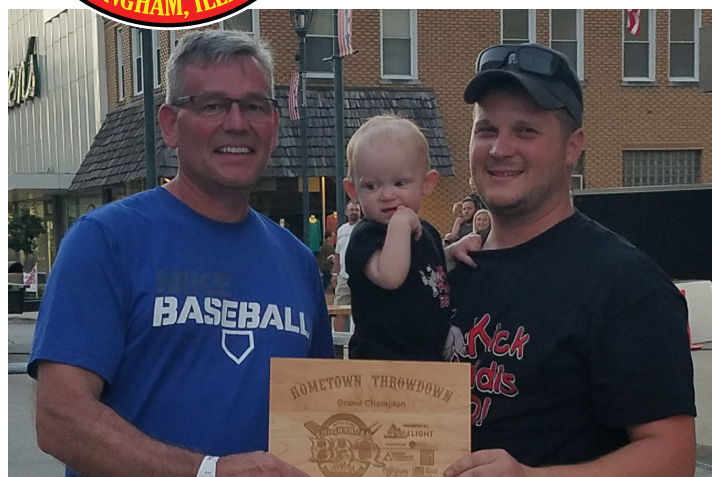
Musical Entertainment:

Quick & Bradley • Kilborn Alley Blues

EVOLVER (formerly ESP) • The Experienced

Hometown Throwdown • Corporate Challenge

EffinghamHamJam.com



Commitment to Leadership and Community Development



Chamber Community Scholarship Fund

- *Established 1996*
- *\$186,000 to 149 recipients*

The Foundation is a 501(c)3 non-profit. Donations to the Chamber Foundation are tax deductible as a charitable contribution.

NETWORK DEVELOPMENT

Connect with other business people at events such as Business after Hours, Coffee & Connections, First Friday Luncheons and annual featured events.

COMMUNICATION

Connect with the Chamber and other business people through our weekly eblast, Chamber Network newsletter, Chamber 360 magazine, member to member online news and social media efforts.

ENHANCED AWARENESS

From the routine to a special occasion in your business like a ribbon cutting or groundbreaking, the Chamber helps you spread the word. A wide variety of valuable advertising and sponsorship opportunities are also available to fit within any budget.

Enhance awareness about your business by completing your business profile in the Business Directory (a top feature of the website!). You can also post your events on our calendar, register for programs and events, access resumes on file and more.



www.EffinghamCountyChamber.com

It's not just who you know, it's who others know as well. Networking is powerful.



HEAR FROM OUR MEMBERS ...



“Being new to the Effingham area several years ago, I was looking for ways to get to know my new community as quickly as possible.

I joined the Chamber of Commerce as quickly as I could. Just being a member has been great as I get to meet new people at least every month by attending Business after Hours. Plus, that allows me to find out about businesses in the County.

Another benefit of being a Chamber member is being able to help out with community celebrations. My wife and I helped out at the Effingham Jam. We worked side by side with people we had never met before. An added bonus was getting to become a patient of my current dentist after working with his wife at the Jam.

The Chamber is a fantastic way to learn about the community and the wonderful people that make things happen.”

- Dale Heinkel, *Consultant, Illinois Farm Business, Farm Management*

Excellence In Business Awards



John Boos & Co., synonymous with Boos Blocks® and used by professional and home chefs around the world, marked their 130th anniversary in 2017. And even more importantly, they opened their brand-new state of the art 116,000 square foot wood manufacturing facility along South Route 45, completing the relocation of the business to a 27-acre campus that has 250,000 square feet under roof and provides employment for 250+ area residents.

The new wood plant crafts over 200 models of Boos Block® hardwood cutting boards, as well as commercial and industrial hardwood countertops. On the commercial side of the business, custom stainless steel fabrication, in the form of food service concessions, was implemented and installed in the following stadiums for 2017: Wrigley Field, Utah Jazz Arena (Salt Lake City), Alamodome, Mercedes Benz Stadium (Atlanta Falcons), Colorado State University Stadium, among others. Partial release of custom stainless steel equipment was also installed in the Milwaukee Arena & LA Soccer Stadium, with the remainder to be shipped in 2018.

John Boos & Co. partnered with Once Films of St. Louis on a company video branding project. They filmed on location to capture what Boos is about and its sustainability aspects. The film was nominated and won an award for best cinematography video in Elements of Advertising at the Addy Awards in St. Louis.

In November 2017, Whoopi Goldberg of ABC's THE VIEW chose her favorite Boos Ultimate Carving Board to be featured on a segment called "Whoopi's Favorite Things." Each studio audience member was gifted a Boos cutting board.

John Boos & Co. has produced cutting boards in Effingham continuously since its founding by Conrad Boos, who harvested a sycamore tree from local woods and produced a butcher block for use by a blacksmith. When a local butcher admired the innovation, he requested one for use in his market and Boos's son, John Boos, adapted the idea for him.

Today, the Boos Block® is a trusted part of the most significant restaurants in the country, as well as millions of families' kitchens.

John Boos & Company is committed to sourcing renewable and sustainable North American hardwoods in the USA. Products are sold domestically and exported around the world. Today Boos is the only company making both hardwood and stainless steel foodservice equipment in the country.

The company is dedicated to producing its butcher blocks and stainless steel foodservice work tables and countertops in Effingham.



3601 S Banker St | Effingham, Illinois | (217) 347-7701 | JohnBoos.com



Dan & Madonna Patton started Patton Quik Print, a small copy shop, in 1982 offering a much needed service in the area. Soon they were offering more than copies and changed their name to Patton Printing & Graphics.

Over the past 30-plus years, the company has grown into a full service business image provider, keeping up with the latest innovation in printing, which included a 1200 sq. ft. expansion in 2016. With the expansion came improved production space, efficiency and equipment upgrades including state-of-the-art digital printing equipment. The improvements gave customers the advantage of obtaining top-of-the-line digital printing locally at affordable prices and high quality short run color print. They are proud to source over 85% of all the labor, supplies, raw materials, and resources used locally.

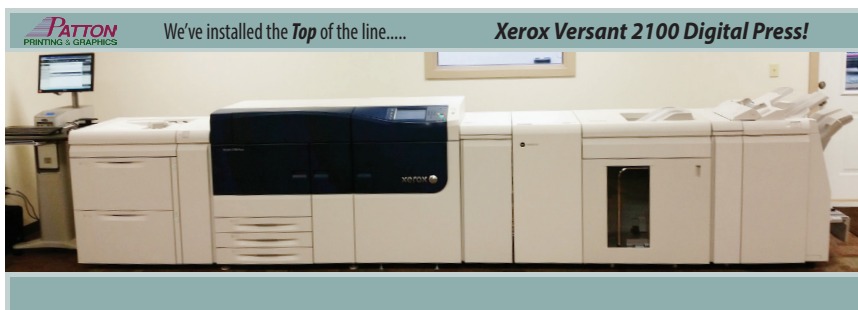
Their promotional products gallery provides a larger sampling of items available to help our customers market their companies.

Patton Printing & Graphics has the privilege of being part of a growing community. Believing that the best way to promote growth is to take care of the surrounding community, the local businesses, and the people who make them successful. Supporting local nonprofit organizations such as the Effingham County CEO Class, Community Support Systems, Catholic Charities, Effingham Sportsbackers, Harmony Playground, Effingham County Chamber of Commerce, Effingham Performance Center and the Rotary Club are just a few of the ways that Patton Printing chooses to help the community grow.

Providing the very highest quality products and services to the Effingham and surrounding communities is the goal that Dan and Madonna Patton set in motion 35 years ago and continues today.

For those yet to discover what the Patton Printing & Graphics team can do for your business, take the opportunity now to discover what years of knowledge in print, design and marketing promotions can do to take your business to the next level.

Patton Printing & Graphics takes this opportunity to thank you for your patronage over the past 35 years! We look forward to serving you for many years to come.



902 W. Wabash Ave. | Effingham, Illinois | (217) 347-0220 | PattonPrinting.com

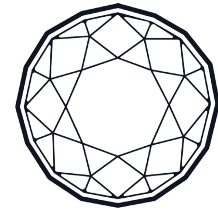
Business Spotlight

Kuche Fine Cabinetry and Design was started with the bold idea of offering high quality custom cabinets at an affordable price with exceptional customer service and design.

With a combined 40 years of design experience and 70 years of industry experience, the owners of Kuche Fine Cabinetry and Design have the know-how to make ideas into realities. Company owners include Randy and Amy Thoele, Joe and Pam Schumacher and Curt and Laura Hemmen.

By partnering with manufacturers that use cutting edge technology, Kuche can provide quality, durability and innovation to serve the greater Effingham area and beyond.

Want to see what's in store? Visit their showroom at 814 E. Fayette Ave in Effingham or check them out online at kuchecabinets.com or call them at (217) 342-2244.



KÜCHE

FINE CABINETRY & DESIGN

Located in downtown Effingham, First National Bank of Waterloo offers community banking, full service banking, loans, investments, mortgages and more to help our area grow and thrive.

Come see the impressive interior remodel that completed this past spring if you haven't already. First National Bank of Waterloo is proud to serve Effingham and the surrounding communities and it shows.

Want to learn more? Visit their banking facility at 210 E. Fayette Avenue in Effingham or check them out online at www.fnbwaterloo.com or give call them a call at (217) 342-3200.

1st National Bank

Effingham ❖ Stewardson

www.fnbwaterloo.com



**The
Momentum
Builders**

LIFE • BUSINESS

The Momentum Builders facilitates a year-long program that promotes the power of purpose, vision and values. They invite those serious about success in their lives and careers to work with them.

The program offers the Pacific Institute's Investment in Excellence training and best practices from the books, *The Advantage*, *The Extraordinary Coach*, *Your Life is Your Business* and more.

The Momentum Builders will discuss, workshop and integrate these concepts into your Life-Business. Your challenges and opportunities will be the focus; gaining momentum toward your vision will be the goal.

Looking for more information? Visit www.themomentumbuilders.com or call them at (480) 797-5858.

Locally owned and operated for 40 years, BB&K Development serves Effingham's corporate business travelers, leisure travel and the local community for events and celebrations with four hotel properties representing iconic brands like Hilton, Marriott, Best Western and Choice.

BB&K offers over 275 sleeping rooms and small meeting facilities through their Hampton Inn and Suites, Fairfield Inn and Suites, Best Western and Comfort Suites, all located in the City of Effingham.



To make reservations, visit each property's website. To contact the corporate offices of BB&K Development, call them at (217) 540-5050 or visit their offices at 1305 N. Keller Drive in Effingham.

Crisis Nursery of Effingham County is on a mission to prevent and protect children from harm. This non-profit organization provides free, 24-hour emergency care services for children aged birth to six years old. These services are available to all in need regardless of location.

Since opening in March 2017 and through the efforts of over 500 volunteers, Crisis Nursery is a vital support center that has served over 120 unique children and provided over 7,000 hours of care for area families in need. Support from partner agencies like HSHS St. Anthony's Memorial Hospital and the Family Life Center, volunteers and community donations have provided facilities to house the center, plus over 2,500 basic care items to families in need.

From physical necessities to emotional needs, Crisis Nursery of Effingham County provides hope and help to our community and beyond.

Want to know how you can help? Visit them at 924 North Merchant in Effingham, visit their website at crisissnurseryofeffingham.com or call them at (217) 342-3000.



An Effingham institution for over 30 years, Ja-Fa Photo specializes in photography needs and services. Whether you are capturing new moments or converting and restoring old memories, your negatives are their positives.

Now under the leadership of Jennifer Hecht, Ja-Fa continues to offer a wide range of photography, from cattle to weddings, with a specialty in school and business clients.

Want to see what develops? Visit www.jafaphoto.com or call them at (217) 347-0812. Ja-Fa Photo studio is located at 1201 West Jefferson Avenue in Effingham.



Business Spotlight

Hearthland Women's Healthcare is the leader in Obstetric and Gynecological care in Southern Illinois. With 26 locations in Illinois and Missouri, they offer comprehensive women's healthcare for all phases of life. They opened their Effingham office in December 2016 at 301 W. Virginia Avenue.

Their dedicated staff includes not only doctors but midwives, nurse practitioners and physical therapists. In Effingham County, you can use their services at HSHS St. Anthony's Memorial Hospital in Effingham.

Curious about what Heartland Women's Healthcare has to offer? Visit www.usaobgyn.com or call them at (618) 997-5266.



One of the most unique businesses in Effingham County, Old Mac's is part drive-thru bodega and part restaurant located in the heart of Dieterich. Whether you need to pick up a quart of milk for mom, chips and soda for a night in or dinner out with the family, Old Mac's has you covered.



The drive thru convenience store allows the customer to order from the comfort of their vehicle and have items delivered to their car. Inside, the café has everything from daily specials to pizza and soft-serve ice cream. Old Mac's home-made cinnamon rolls are a popular breakfast item.

Hungry for more? Visit www.oldmacsdrivethru.com or call them at (217) 925-558.

Old Mac's is located at 203 N. Loda St, along Route 33 in Dieterich.

Hardware, software, networking and just about anything related to small business computer technology needs are available through Team ITS, LLC., an Information Technology consulting company.

With a team of specialists offering nearly 50 years of collective experience and using industry best practices, TEAM ITS can provide enterprise level solutions at affordable prices and secure critical business data through network security management, monitoring, work flow analysis and disaster recovery solutions.

Team members are certified Microsoft Specialists and the company is an authorize dealer for a broad array of workplace hardware.

To learn more about TEAM ITS, visit their website at yourteam-its.com or call them at (217) 460-0155.



TEAM ITS, LLC

The year 2018 will mark significant milestones for Kingery Printing Company. In October we will celebrate our 50th anniversary in business. The Kingery family recalls with gratitude the many friends and colleagues that have helped them over the years.

Still family owned and operated by the second generation, Kingery Printing continues to build on the founding vision of continued investment in the latest technologies and superior customer service. The Board of Directors pictured includes, left to right: James Kingery, Director; Michael Kingery, President; Angela Helmuth, Secretary; John Kingery, Chairman; and Steven Kingery, Vice-President.



With three locations, Kingery Printing Company takes pride in being an active part of its communities and looks forward to serving your printing needs for many years to come. Kingery Printing Company is located at 3012 S. Banker St. in Effingham. Call (800) 743-5151 or visit on the web at kingeryprinting.com



As Effingham's newest education facility, Effingham Academy of Cosmetology offers a state-of-the-art facility with innovative technology to ensure their students obtain a quality education. Students learn all phases of cosmetology, hairdressing, and manicuring preparing them for the State Board of Cosmetology exam.

Classes consist of a combination of classroom instruction and practical labs. Students are taught the latest hair and makeup techniques and are able to provide complete beauty services for men and women from hair to nails and much more. All work is performed under the supervision of licensed educators.

To learn more about the training program or to schedule an appointment for a special service, visit the salon and school at 2200 South Banker in Effingham, give them a call at (217) 342-4015 or tour their website at effinghamacademyofcosmetology.com.



McKendree University, established in 1828, is the oldest college in Illinois. Located in the heart of Lebanon, IL, McKendree University has been named a Best College to Work for by US News and World Report.

Whether on-campus or online, McKendree offers many avenues for people to earn degrees, including an MBA. A military-friendly university, McKendree has satellite campuses at Scott Air Force Base and in Kentucky to make it as easy as possible to obtain a college degree.

Curious to learn more? Visit McKendree.edu or call them at (618) 537-6574.



Business Spotlight

For the past ten years, PetsBloom Pet Sitting & Services has provided a stress-free, convenient, in-your-home alternative to boarding pets or asking friends or family to care for them while away. PetsBloom also has the distinction of being veteran and locally owned.



Owner and Certified Dog Trainer Marisa Schultz is committed to providing her clients' pets with the same level of care she gives her own four-legged family members. Her services include going into the home and caring for pets in their own familiar surroundings, as well as pet sitting, dog walking and vet runs. Services are tailored along with the frequency of visits needed to meet the pet's specific needs.

With the slogan, "Your pets will Bloom with happiness!", PetsBloom invites you to visit them online at petsbloom.com or call them at (217) 690-4535 to learn more.

Developed in 2014 by former Effingham County CEO student Keith Sutterfield, Sutterfield Media, Inc has grown into a full-service video production company that provides area residents with video content for all purposes.

Sutterfield|Media

Working from concept to delivery, Sutterfield Media can produce videos for your marketing, branding, fundraising and personal needs.

In the market for media? Visit www.sutterfieldmedia.com or call them at (217) 994-9188. Sutterfield Media, Inc is located in Effingham, IL.

Employerwise, LLC, is a consulting business dedicated to helping Central Illinois businesses and organizations by providing simple solutions to workplace challenges. Their focus is on helping employees become more successful at work. Methods utilized to deliver results include employee seminars, group training, individual coaching and employer support.

For over thirty years, David Cox, SPHR has presented seminars to employees with public, non-profit, and small business entities in both workplace specific and general training courses. He has delivered presentations to employer groups, trade associations, civic clubs, in-service meetings, college classes, and college student organizations.

Employers can obtain a free initial consultation, with no obligation, to employee development needs and services supplied by Employerwise. The company can be contacted at (217) 358-9492 (call or text) or by email to david.cox@employerwise.com. Information can also be found at their website: employerwise.com.



Since 1875, HSHS St. Anthony's Memorial Hospital has provided for the health care needs of the residents of the Effingham community and the south-central region of Illinois. In 2017, they invested in a number of new technologies to improve surgical procedures and were recognized for patient safety and quality.

An orthopedic MAKO Robot allows use of a robot for total knee replacements and a new da Vinci Xi Robotic Surgical System allows specially-trained surgeons to perform very delicate and complex operations through a few small incisions. The da Vinci system dramatically improves the surgeon's visual ability – allowing them to see the smallest areas deep within the body, highly magnified on a high definition 3D monitor.

The Leapfrog Group, a national nonprofit health care ratings organization which assigns Hospital Safety Grades to hospitals nationwide based on their performance in preventing medical errors, infections and other harms, gave St. Anthony's one of 832 "A"'s for its commitment to

keeping patients safe and meeting the highest safety standards in the US.



HSHS
St. Anthony's
Memorial Hospital

HSHS St. Anthony's Memorial Hospital is located 503 North Maple St, Effingham, IL 62401. Learn more at stanthonyhospital.org.

One of the jewels of the Effingham area is the village of Strasburg, located in Shelby County. 'Right in the middle of everything', Strasburg has continued to grow and thrive throughout 2017, seeing more business growth, expanded volunteerism and anticipating more positive development in 2018.

Strasburg area businesses that have recently opened or been improved include: Richland Creek Machinery, Krile Auction Center, Kessler's 24 Hour Gym, 32 Below Bar, Edwards Crafts and Junk to Gems and more growth is anticipated in the new year. Housing and community growth is assured with sale of lots in York Acres, new water and sewer lines, efforts to secure faster high speed internet and other community improvements.

Also celebrating a successful year in Strasburg was Strasburg Community Action Network (SCAN), with an updated plan, new teams and new goals. The community's volunteer organizations include the Lion's Club, American Legion, Seasoned Citizens and the high school organization, Leo Club.

Looking to learn more? Check them out at www.strasburgil.com. Be on the lookout for new Gnome banners located along Route 32.



Business Spotlight

Marketing is about more than content, target audiences, platforms, and taglines. Marketing is about emotional connections. It's understanding who you're speaking to, how they feel, what they believe, how they express themselves. It's finding the clearest, most transparent path to those individuals by way of their unique emotional and psychological characteristics.

At image squared marketing, we've developed a marketing system that utilizes multiple paths, both on- and offline, to your target audience. We determine the most efficient, most effective way to spend your ad dollars, often saving money while increasing conversions and tracking valuable data where no data previously existed.

This approach, coupled with our Full-Circle Marketing campaigns that leverage social with traditional marketing/advertising/PR, is our equation for marketing success.

Do you have what it takes to become exponential? Find out at imagesquaredmarketing.com. Call us at (217) 690-7474 or visit our office at 1909 S Banker St, Ste D, Effingham, Illinois.



HEAR FROM OUR MEMBERS ...



"Blessings in a Backpack of Effingham is a member of the Effingham County Chamber of Commerce because of the connections it provides us to local businesses and community members. The most valuable benefit for our non-profit has been Chamber mailings and dedicated e-mails. They offer terrific value when promoting events and fundraisers. The number of children we serve has grown rapidly in the few years we've been in the Effingham community. Reaching large numbers of supporters has been a key to our ability to successfully serve children in need. We would highly recommend Chamber membership to other non-profit entities."

- Amanda Emmerich,
Blessings in a Backpack- Effingham



Thank You

to the Effingham County Chamber of Commerce for
helping make Effingham the
Shining Diamond in Downstate Illinois!

City Council

Mayor Jeff Bloemker

Commissioner Merv Gillenwater • Commissioner Kevin Willis

Commissioner Don Althoff • Commissioner Kevin Esker

Administration

Jim Arndt, City Administrator

Jane Kemper, Deputy Liquor Commissioner • Kelsey Lock, City Clerk

Steve Miller, Public Works Director • Todd Hull, Economic Development Director

Jeff Fuesting, Police Chief • Joe Holomy, Fire Chief







Prudential

The Prudential Insurance Company of America

Richard J. Hartke, Financial Professional

217-347-8801

210 S. Second Street, Suite A - Effingham, IL 62401

Blessings in a Backpack
Feeding The Future Of America
Effingham, IL

Our Mission:
To combat childhood hunger
in Effingham, one student,
one bag at a time.

P.O. Box 28
Effingham, IL 62401

www.EffinghamBackpack.org

100% of money raised will be used to feed our local kids

SDS

Call today and let us take the headache
and hassle out of business technology.

217.347.5242

Professional Computer Services
313 Professional Park Ave | SDScomputers.com

**EFFINGHAM
NEW CAR DEALERS**



Dan Hecht



217-342-4111

2400 S. Banker St. • www.danhecht.com



Russ Braunecker



Cadillac

217-347-0505

2309 S. Banker St. • www.brauneckerauto.com

Goeckner Bros
CHRYSLER DODGE Jeep

(217) 342-3355

600 E. Fayette Ave. • www.goecknerbros.net



NORTH SIDE



(217) 342-3929

1312 North Keller Drive • www.effinghamford.com



Roy Schmidt Honda



217-342-8600

1705 W. Fayette Ave. • www.royschmidt honda.com



Farnsworth
GROUP

Andrew Hanfland PE
Engineering Manager

office 217.342.5668

cell 217.343.6993

ahanfland@f-w.com

HODGSON MILL Mercantile

- Family-Owned & Locally Made Foods, Crafts & Gifts
- Healthy Products Made in Effingham, IL
- Cooking Classes



1001 Ford Avenue, Effingham, Illinois 62401
217.347.6455 (MILL) • HodgsonMill.com

**A small dot on a map.
A big place in our hearts.**



1-855-MY-MIDLAND | midlandsb.com

Effingham Main
110 S. 5th St
Effingham, IL 62401

Effingham North
1302 Thelma Keller Ave
Effingham, IL 62401

Midland 
States Bank®

Member FDIC

Great strength. More heart.





WATER COOPERATIVE, INC.

Helping Grow Families, Businesses & Communities.



108 S. Main St.
Dieterich, IL 62424
217-925-5566
www.ejwatercoop.com



Try National Bank in the heart of Effingham on Keller Drive

Enjoy a better way to bank

- 11 branches covering South Central Illinois
- Home loans with great rates & low closing costs
- Local lending decisions on all commercial loans



National Bank

*National in Name
Local in Ownership*

501 N. Keller Drive
Effingham, IL 62401

P: 217-347-2300

F: 217-347-2325

national-bank.com

Bank NMLS #421813



Chamber Cooperative Energy Buying Program

Cost Savings for Your Commercial Energy and Natural Gas Needs

- Low, Fixed-Rate Monthly Bills
- Long-term Budget Stability
- Group Buying Power
- Free Energy Education and Training
- Customer Service Assistance Takes the Headache Out of Billing Errors and Service Issues
- Experienced Energy Professionals Handle the Details

COI ASSOCIATES | **Energy Co-op**
Buying Power for
Businesses & Residences
Energy & Sustainability Management Consultants

**Call Today to Learn More About
Saving Hundreds of Dollars on
Your Business's Energy Bills!**

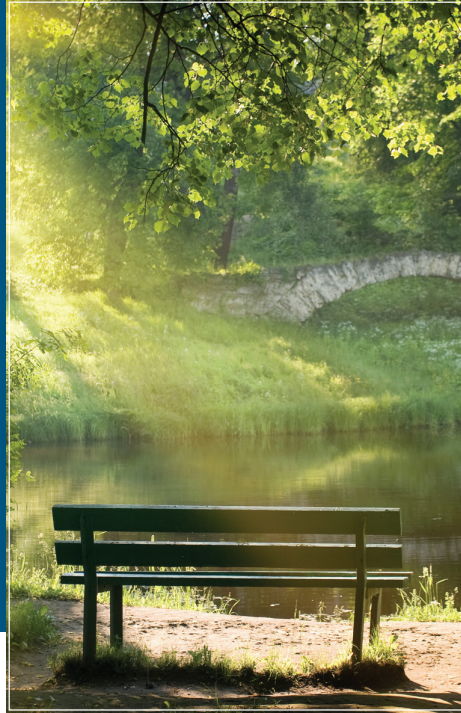
217.342.4147

Lincolnland

Home Care
1-800-879-3212



Hospice
1-800-454-4055



Home Medical Equipment
1-800-345-3191



Sarah Bush Lincoln

www.sarahbush.org



Effingham Regional
INCUBATOR NETWORK

Join the next generation of entrepreneurs
and consider starting up your own business!

**The Effingham Regional
Incubator Network provides:**

- Shared office space
- Technology
- Entrepreneurial coaching
- Educational experiences

The goal of a business incubator is to nurture the development of entrepreneurial companies and help them survive and grow during their start-up period when they are most vulnerable.

**We currently have five Incubator locations:
Effingham, Altamont, Dieterich, Teutopolis & Newton.**

Contact the Effingham County Chamber of
Commerce for more information at

217.342.4147



**Find us on Facebook:
Effingham County Incubator Network**

This Project Powered By:

 **The Alliance**
Effingham Regional Growth Alliance



INSURANCE | FINANCIAL SERVICES

Tammy Douthit
Financial Representative

217.347.5313 | 866-COUNTRY
tammy.douthit@countryfinancial.com

0118-014

Village
WINE & GIFT SHOP

109 S. Banker • Effingham • 217-347-0477
www.EffinghamVillagewine.com

YES, OWNING A



HOME IS WELL
WITHIN
REACH!

For over 125 years, First Neighbor has helped
our neighbors purchase their own homes.

For your home loan, let one of our lending
professionals help put a home within reach.



FIRST NEIGHBOR BANK, N.A.

Toledo
Greenup
Newman
Charleston
Casey
Neoga
Mattoon



MEMBER
FDIC

Toll Free: 1-877-865-3361
Apply online at: FirstNeighbor.com



THE VILLAS OF HOLLY BROOK—EFFINGHAM

ASSISTED LIVING



Lindsey Runde
Executive Director
904 W. Evergreen Avenue
Effingham, IL 62401
217-342-2345 office
217-342-2351 fax
veff.adm@meridiansenior.com



1442 N 8th Street
Vandalia, IL 62471
618-283-9533
www.prioritystaffinggroup.com

Independently owned agency serving
Central and Southern Illinois since 2010.



"All of us, working together for you."



*Offering the best in musculoskeletal care, the Team at Bonutti Clinic
is at the forefront of advancing orthopedic care - for you.*

Orthopedic Surgery
Occupational Health
MAKOplasty® Robotic
Hip and Knee Surgery
Cervical & Lumbar Surgery
Sports Medicine
Outpatient Therapy
Research and Diagnostics
Urgent Care

Orthopedic Surgeons

Peter Bonutti, MD/FAAOS/FACS
Timothy Gray, MD/FAAOS
Frank Lee, MD/FAAOS
Didi Omiyi, MD
Jonathan Workman, DO
Joseph Ajdinovich, MD

Occupational Medicine

Karl Rudert, DO/FACEP

217-342-3400

1303 W Evergreen Ave • Effingham, IL
www.bonutticlinic.com

Medicare • Blue Cross Blue Shield • Healthlink • MultiPlan • Health Alliance • Coventry/Aetna



become
exponential

Marketing is about more than content, target audiences, platforms, and taglines. Marketing is about **emotional connections**. It's understanding **who** you're speaking to, how they **feel**, what they **believe**, how they **express themselves**. It's finding the clearest, most transparent path to those individuals by way of their unique **emotional and psychological characteristics**.

At image squared marketing, we have developed a foundational approach to marketing.

This approach, coupled with our Full-Circle Marketing campaigns that leverage **social** with traditional marketing/advertising, is our equation for marketing success.

Do you have what it takes to **become exponential**?

Find out at
imagesquaredmarketing.com.

217.690.7474

1909 S Banker St, Ste D, Effingham, IL

Get Your
FREE Report!





Ruben Boyajian, M.D.

General Surgeon



Emily Boyajian, APN

Nurse Practitioner

**Breast Care Specialist • Surgical Oncology
Certified Breast Ultrasound**

General and Laparoscopic Surgery • Gastrointestinal Endoscopy

(217) 347-2255 • RBoyajianMD.com

904 Medical Park Drive, Suite 2 • Effingham, Illinois



**Crossroads
Bank**

Visit one of our two locations here in Effingham, Illinois
2000 SOUTH BANKER STREET • 806 NORTH KELLER DRIVE

Member **FDIC** LOCALLY OWNED, LOCALLY MANAGED, LOCALLY OPERATED
WWW.CROSSROADSBANK.COM FACEBOOK.COM/CROSSROADS.BANK.EFFINGHAM.IL

DOEHRING, WINDERS & CO. LLP

Certified Public Accountants

400 W. Jefferson Ave.
Effingham, IL 62401

(217) 342-0377
www.dwcocpa.com

“
**That's
MY
Bank!**
”

Need a Loan? *Call us first!*

**1st National
Bank**
of Waterloo



fnbwaterloo.com

Call Brian, Debbie, or Dennis today!

EFFINGHAM • STEWARDSON

217.342.3200

217.682.3236

Kingery Printing

Helping Our Clients Reach Their Clients for 50 Years



Kingery Printing is a second-generation, family-owned company specializing in innovative, print-driven products and services designed to help our clients reach their clients.

On October 1, 1968, with the help of his wife, Dolores, John Kingery founded Kingery Printing Company in a rented building on the courthouse square in Effingham, Illinois.

1968

In 1984, planning began for the construction of a new plant on ten acres of land along Route 45, south of Effingham. The new 24,500 square foot plant opened for business on March 18th, 1985.

1984

Two long press lines were added in 1996: an M-110 heat-set web and a 40" Heidelberg sheet fed press. That same year, KPC transitioned from a film-based prepress to Computer to Plate (CTP), adding a Creo Trendsetter.

1996

On January 2nd, 1992, Kingery Printing acquired the assets of M&D Printing in Henry, Illinois.

1992



In 2012, Michael Kingery became the President of Kingery Printing Company. In the same year, a 5-Unit Goss Sunday 2000 heat-set web press was installed.

2012

On December 1st, 2017, Kingery Printing acquired the assets of United Graphics, LLC in Mattoon, IL.

2017

2018



2018 marks the 50th anniversary of Kingery Printing. To celebrate this milestone achievement, we are excited to announce that we have purchased and will be installing a new KBA Rapida 40", 10-unit sheetfed press.

This state-of-the-art press will be operational in Q1 of 2018. To keep up with the progress of this and other initiatives, "Like" us on Facebook, "Follow" us on LinkedIn, and visit our website.



Kingery Printing

800-743-5151 • kingeryprinting.com



*We Design,
Print & Promote
Your Business!*

902 W WABASH AVE • EFFINGHAM, IL 62401

217.347.0220

www.pattonprinting.com

A Business Imaging Company

DESIGN

- Design from Concept to Completion
- Digital Design to Digital Media
- Simplistic to Detailed Designs
- Design brings your Image & Branding together

PRINTING DIGITAL & OFFSET

- Postcards/Flyers
- Business Cards/Envelopes
- Work Orders/Invoices
- Brochures/Newsletters

DIRECT MAIL

- Postcards/Self-Mailers
- Every Door Direct Mail
- Newsletters/Brochures
- Business Letters/Flyers

PROMOTIONAL PRODUCTS

- Mugs/Glasses
- Ink Pens
- Water Bottles/Tumblers
- Flash Drives/PowerBanks

POSTERS/BANNERS/SM. SIGNS

- Retractable Banners/Stand
- Foamboard Displays/Signs
- Yard Signs/Vinyl Banners

A very heartfelt "Thank You" for making us a part of your team for the past 35 years!

Mapping Effingham's Progress!



PHELPS MAP SERVICE

P.O. Box 622
Charleston, IL 61920
PH. (217) 345-4007

phelpsmaps.com



Realty Concepts
111 S. Henrietta
Effingham, IL 62401

Jerry Jansen, GRI

Bus: 217-342-6080
Res: 217-868-5370
Cell: 217-343-3915
jerry@jerryjansen.com
www.century21realtyconcepts.com

Each office is independently owned and operated.



**To All The Future Leaders
Of Our Effingham County
Community**



get involved
with both YBNext & the Chamber



Annual YBNext Membership:

\$50 for Chamber Members

\$75 for non-Chamber members

YORK ACRES SUBDIVISION

New Residential Lots Available - \$2,500

Up to 50% back in tax abatements each year up to \$2,500.

For more information:
www.strasburgil.com or
 email info@strasburgil.com

Village Office Ph: 217-644-3007
 (Monday, Wednesday, Thursday)



STRASBURG
Right!  **IN THE MIDDLE OF EVERYTHING**



www.craigsimondesign.com 618-550-8581



Employerwise, LLC

David Cox
 Principal Consultant

Employee seminars
 designed to encourage better:

Attitudes
Behaviors
Practices

Serving Central Illinois

www.employerwise.com
david.cox@employerwise.com
 (217) 358-9492

Central Illinois' only all-female obstetrics group



Left to right: Stefani Beverlin, PA-C; Dawn McDaid, M.D., FACOG;
 Jennifer Dust, M.D., FACOG; Kelly Haller, M.D., FACOG; Millie Nelson, M.D., FACOG;
 Nichole Suckow, PA-C; Sara Abercrombie, CNM



Here for *you* at **EVERY**
STAGE of Life.

912 N. Henrietta St. • Effingham, IL

217-342-3337

www.effinghamobgyn.com

*Proudly serving Effingham and the
 surrounding communities since 1994.*



Jeff Whightsel,
 M.D., FACOG
 (gynecology only)



CAREER OPPORTUNITIES

As the leading dental support organization, Heartland Dental is experiencing phenomenal growth and needs individuals like you to join our team. Come experience an exciting career providing non-clinical support to a network of offices nationwide.

We Are Looking For Team Members With Backgrounds In:


- MARKETING
- EDUCATION
- OPERATIONS
- INFORMATION TECHNOLOGY
- SUPPLIES
- DEVELOPMENT
- HUMAN RESOURCES
- COMMUNICATIONS & BRANDING
- LEGAL
- ACCOUNTING
- AND MORE!

APPLY TODAY!

CALL: (217) 540-5100

CLICK: jobs.heartland.com





BOTTOMLESS BOTTLED WATER.

The easiest way to get bottled water at home is to get rid of all the bottles. Culligan® Reverse Osmosis Drinking Water Systems eliminate up to 99.9% of contaminants that can be found in some household tap water.*

OUR LOWEST PRICES OF THE YEAR!

FREE WATER TEST

No Obligation!

Only one coupon per customer. Dealer participation may vary. See dealer for details. Limited time offer. Not valid with other offers. ©2018 Culligan International Company.

Get a Culligan® system for as low as **\$7.99/MONTH** OR **NO PAYMENT** and **NO INTEREST** for 6 months.

Only one coupon per customer. Dealer participation may vary. See dealer for details. Limited time offer. Not valid with other offers. ©2018 Culligan International Company.

*Contaminants may not be in your water.

You could give your people

Culligan Water

ChooseCulligan.com • 800-252-2089

PHONE 217-536-6961



EXCAVATOR

MARXMAN EXCAVATING

GENERAL CONTRACTOR

ROBERT (BOB) MARXMAN
Owner



BACKHOE

BULLDOZING
TRENCHING

9629 N 1200 ST
EFFINGHAM, IL 62401



EFFINGHAM COUNTY
CHAMBER OF COMMERCE

(217) 342-4147

EffinghamCountyChamber.com | 



Cordia Harrington

"The Bun Lady" will share her story of courage and success as a businesswoman in her suitably titled keynote address, "Buns of Steel". This nationally recognized, award winning baker has elite customers including McDonald's, Five Guys, Sara Lee, Whole Foods, ConAgra, and more.



GET INSPIRED BY OUR
KEYNOTE SPEAKERS ON
WEDNESDAY
MARCH 7, 2018 AT THE
KELLER CONVENTION
CENTER



Dr. Rich Bailey

The creator of "Billy-Bob Teeth" will explain the necessary vision, skills, and opportunities that every entrepreneur needs to "design a business that fits". Listen to his story behind these novelty chompers that have brought laughter to millions.

Register for tickets at effinghamceo.com

Adults: \$50

Students: \$30

Exceptional General Dental Services!

**Walk-Ins Welcome • Emergency Services
Open Some Saturdays**

Implants • Dentures • Partial Dentures

Implant Retained Dentures • Exams • Digital X-Rays

3D Cone Beam X-Rays • Tooth Extractions • Cleanings

Deep Cleanings for Periodontitis • Fillings • Crowns

CEREC Same Day Crowns • Bridges • Cosmetic Restorations

Whitening • Root Canal Treatment • Laser Therapy

Pediatric Procedures • Sealants



Dr. Joe Balda



Dr. Brian Balda



Dr. Chris Balda



(217) 342-3411 • BaldaDental.com

911 N. Henrietta St. • Effingham, Illinois

(Located behind ALDI)

Thelma Keller Convention Center at the Holiday Inn

**Illinois' Premier
Meeting and
Conference Facility**



1202 N. Keller Dr., Effingham, IL 62401
(217) 347-5115
www.kellerconventioncenter.com

STAFFING SOLUTIONS TO FIT YOUR BUSINESS NEEDS

Temporary or long-term, Express has skilled workers ready to fit your business needs.

Contact us and see how Express can help.

(217) 347-2224

813 N 3rd Street

Effingham, IL 62401



Positions include:

- Clerical
- Administrative
- Customer Service (CSR)
- Reception

ExpressPros.com/EffinghamIL

Travel with the **CHAMBER**



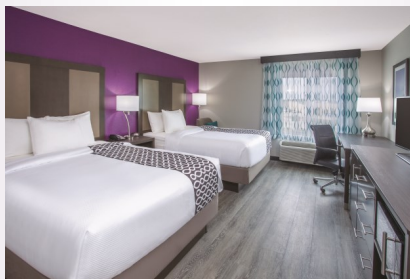
CANADIAN ROCKIES BY TRAIN
June 24 - July 1, 2018



ICELAND – LAND OF FIRE & ICE
October 11 – 17, 2018



CLASSIC DANUBE RIVER CRUISE
with Oberammergau Passion Play
May 18-28, 2020



- New Pillowtop Beds
- Microwave & Refrigerator
- Upgraded Fitness Center
- Indoor Heated Pool

- Ultra Fast Wi-Fi
- Complimentary Hot Breakfast
- Kitchenette Rooms


LAQUINTA
INNS & SUITES

1103 Avenue of Mid America | Effingham, IL 62401

217.540.1111

wake up on the bright side®



Waupaca Foundry,
Inc. – Effingham
Illinois,
formerly known as
Hitachi Metals
Automotive
Components,
machines

precision automotive components for the
automotive industry. Waupaca Foundry, Inc.
is committed to relentless improvement,
forward-thinking sustainability initiatives,
and providing a reliable experience to the
millions who use our products every day.

E F F I N G H A M

DAILY NEWS

effinghamdailynews.com

*Print and Digital
Marketing Solutions
for Your Business*

201 N. Banker St.
Effingham, IL 62401
217.347.7151



JANSEN'S
Heating & Air
"Your Comfort Specialist"

800-772-3920
(217) 347 - 5223
11984 E US HWY 40
Effingham, IL 62401

800-434-3498
Pana / Taylorville

www.JansensHeating.com

GEOTHERMAL
Done Right



J&J Ventures
GAMING

If Growth Is In Your
Business Plan,
We Are Your Operator!

J&J Ventures brings unparalleled experience in
gaming, legal, management and route operations
to the video gaming terminal business.

(855) 752-9558      **jjventures.com**



Kathy Schroeder
Independent Senior Sales Director

8607 E 1250th Ave
Effingham, IL 62401
217-821-1422 text or call
Friend me on FB
kschroeder@marykay.com
www.marykay.com/kschroeder

Enriching Women's Lives™

MARY KAY



Cornerstone
TRAVEL LLC

1007 W. Jefferson Ave.
Effingham, IL 62401

- Destination Weddings
- Cruise's
- Vacations
- Honeymoon Trips



Contact John today!

217-347-TRIP (8747)

email: cornerstone_travel@yahoo.com



EFFINGHAM COUNTY CHAMBER OF COMMERCE

Welcome to Our 2017 New Members

24 Hour Gym
A & R Mechanical Contractors, Inc.
Addis' Archery
Alicia Schuette Photography
Andrew Gobczynski Big Heart Foundation, Inc.
Blume & Baum Inc.
Catching Glimpses
Chili's Grill & Bar
Country Haven Event Center
Craig Martin Simon Design
CULLIGAN WATER
Direct Lines, Inc.
Effingham Co. Habitat for Humanity
Effingham Express Car Wash
Employerwise, LLC
Float Effingham
Gopher's Grill Inc.
Heartland Women's Healthcare
Jean Bohnhoff
Kuche Fine Cabinetry & Design
Legado LLC
Lickin' My Chicken N Pullin' My Pork
Lincolnland Building & Construction Trades Council
Lochmeuller Group
Loy Sound Production
Mattoon Golf & Country Club
NAMI of Effingham County
Old Mac's
Pella Windows & Doors
PetsBloom Pet Sitting & Services
Precision Chiropractic
Priority Staffing Group
Smoothie King-Effingham
Sutterfield Media, Inc.
Team ITS, LLC
Teresa McCloy Coaching
The Momentum Builders
The Skin Refinery
Title Professionals Inc.
The Wooden Spool
Three Z Printing
Truck Centers Inc.

A-Ce

#1 Network
72VEST
AAA Mobility Specialist, LLC
AAIM Employers' Association
Accuracy Firearms



ADM Animal Nutrition
March Member of the Month

Advanced Digital Solutions/Xerox
Advanced Veterinary Care, LLC
AFLAC Insurance
AGE-Affordable Gas & Electric
Agracel, Inc.
Air Evac Lifeteam
Air Methods
Air Stamping Inc.
AKRA Builders, Inc.
Al's Tire Mart & Electronics
ALL IN MEDIA
Allstate Insurance
Altamont CUSD #10
Altamont News Banner
Ameren Illinois
America's Best Value Inn
American Cancer Society
American Red Cross
Anatime Event Group
Anderson's Jewelry
Andes HealthMart
Anthony Acres Resort, Inc.
ApexNetwork Physical Therapy
Arab Termite & Pest Control
Arrow Pest Control, Inc.
Auctions/Realty by Schackmann
Auto Glass Unlimited
AutoMall of Effingham, The
B & L Machine and Design
B B & K Development
Bahrns Equipment, Inc.
BALDA Dental Office
Bales Unlimited Inc.

Ballard Nature Center
Bandy's Medical Equipment
Barlow Lock & Security, Inc.
Barr Construction & Remodeling, Inc.
Baseball Card Connection
Bauer Funeral Home
Beccue Builders Inc.
Beck's Hybrids
Best Western Delta Inn
Better Business Bureau-Eastern MO & Southern IL
Betty Fearday
Bev Soltwedel
Bierman Welding Inc.
Big Brothers Big Sisters Effingham Co.
Bill Nuxoll
BK Resources
Blessings in a Backpack
Bob's Discount Home Improvement
Bonutti Clinic
Boos Enterprises Inc.
Brad Hastings
Bray Title Services
Brookstone Estates/Suites
Browns Drug Store
Brücke Financial Inc
Brumleve Industries, Inc.
Buhnerkempe Plumbing & Heating Inc.
Burford Electric
Burkland's Florist & Gifts
Burrow Turf Care
Bushue Human Resources Inc.
C & C Properties
Camp Lakewood Campground
Camp New Hope
Camp Walter Scott
Campos Family Dental
Cancer Care Specialists of IL/
Crossroads Cancer Center
Car Company of Effingham, Inc., The
Carle Physician Group
Carriage House Event Center
CASA of Effingham County
Casey's General Store
Catholic Charities
CCI RediMix
CEFS Economic Opportunity Corp.
Center For Jaw and Facial Surgery, P.C., The
Central IL Home Inspection Service Inc.

Chamber Members

Ce-Fr

Central Illinois Oral Surgery
 Century 21 - Realty Concepts
 Charles Heuerman Trucking Co.
 Chuck's Satellite & Antenna
 City of Effingham
 Civil Design Inc.
 Claude Coats
 Clean Uniform Company
 ClearView Window
 Cleaning & Tinting Inc.
 Click Video Productions LLC
 CliftonLarsonAllen
 Clinic Effingham, The
 Cobblestone Inn & Suites
 Comfort Suites
 Community Directories, Inc.
 Community Support Systems
 Compass Advisory Group
 Consolidated Communications
 Continental Mills
 Cornerstone Travel Agency
 Cornerstone Wealth Management
 COUNTRY Financial
 Country Inn & Suites
 Country Peddlers
 Country Rhodes
 CQI Associates
 Creative1, inc.
 Credit Collection Partners
 Crisis Nursery of Effingham County
 Cromwell Radio Group



Crossroads Bank

January Member of the Month

Crossroads Truck Equipment
 Custom Family Homes Inc.
 CW Motorsports
 Dale Carnegie Training of
 Greater Illinois, Inc.
 Dale Esker Construction
 Dammerman & Associates
 Benchmark Realty
 Dan Hecht Chevrolet-Toyota
 Dan's Glass Inc.
 Data Management Shredding
 Deb's Catering & Vending
 Denny's

Designs Unlimited, Inc.
 Detection Security Co., Inc.
 DHB Transmission Specialists
 Dieterich Bank
 Dieterich Business Association
 Dieterich Community Development
 Corporation
 Dieterich Community Unit #30
 Dimond Bros. Insurance Agency Inc.
 Dirtbuster Carwash LLC
 DMI - D. Martin Industries Inc.
 Doedtmann Apartments
 Doebling, Winders & Co. LLP
 Dog, The
 Don Bushue
 Donnewald Distributing Company
 Double D Sign Repair
 Double K Auto Glass
 Dr. James C Graham S.C.
 Dr. Margaret Merry-Niebrugge, DMD
 Dr. Ruben Boyajian
 Drees Enterprises LLC
 Drees Plumbing Inc.
 Drs. Sehy & Jones Optometrists
 Duckett's Carpet Care
 Dust & Son Auto Supplies
 Dust Electric
 Dusty's Outdoor Media, LLC
 Eastern Illinois University
 Ed Wolfe Construction, Inc.
 Edward Jones - Adam Butts
 Edward Jones - Lynn Deters
 Effingham Academy of Cosmetology
 Effingham Ambulatory Surgery Center
 Effingham American Legion Post 120
 Effingham Animal Rescue Sanctuary
 Effingham Area Crime Stoppers
 Effingham Asphalt Co., Inc.
 Effingham Auto Repair LLC
 Effingham Builders Supply
 Effingham Child Development Center
 Effingham City/County
 Committee on Aging
 Effingham Co. Recycling and
 Effingham Co. Transfer Station
 Effingham Country Club
 Effingham County
 Effingham County Cultural
 Center and Museum Assoc.
 Effingham County Farm Bureau
 Effingham County Health Department
 Effingham County Public
 Transportation
 Effingham County Republican Party
 Effingham CUSD #40
 Effingham Elks Lodge #1016



Effingham Daily News

August Member of the Month

Effingham Event Center
 Effingham Homes
 Effingham Obstetrics &
 Gynecology Assoc.
 Effingham Ophthalmology Associates
 Effingham Performance Center
 Effingham Printing Company
 Effingham Public Library
 Effingham Railroad Company
 Effingham Regional Growth Alliance
 Effingham Signs & Graphics
 Effingham Surgical Associates, S.C.
 Effingham Telcom Solutions Inc.
 Effingham Teutopolis News Report
 Effingham Tire & Auto Center Inc.
 Effingham Travel Agency
 Effingham Urology Associates, S.C.
 Effingham Veterinary Clinic
 Effingham Water Authority
 EJ Water Cooperative, Inc.
 Enterprise Dynamics Inc.
 ESS Clean Inc.
 Equity, The
 Evergreen Nursing & Rehab, LLC
 Express Employment Professionals
 Factory Connection
 Fairfield Inn & Suites
 Family Care Associates of Effingham
 Farm Credit Services of Illinois
 FARMWELD INC.
 Farnsworth Group Inc.
 Favorite Things LLC
 FE Moran Security Solutions
 Fifth Third Bank
 Fine Arts, County of Effingham
 Fire Equipment Service & Sales Inc.
 Firefly Grill Inc.
 First Mid-Illinois Bank & Trust
 First National Bank - Effingham
 Banking Center
 First National Bank - Stewardson
 Banking Center
 First Neighbor Bank, N.A.
 Four Scoops, Inc. dba Dairy Queen
 Foxy Styles Salon & Spa
 Frank Kabbes

Fr-Mc

Frisse & Brewster Law Offices
 Fujiyama Japanese Steak House
 Gabby Goat
 Girl Scouts of Southern Illinois
 Glenwood Assisted Living, The
 Glik's
 Global Technical Systems Inc.
 Goeckner Accounting &
 Financial Services, Inc.
 Goeckner Bros. Inc.
 Grandma's Twice is Nice
 Grunloh Building Inc
 Grunloh Construction, Inc.
 Guaranteed Rate, Inc.
 H & R Block
 H and W Service Center Inc.
 Hampton Inn & Suites
 Heartland Beef dba Arby's
 Heartland Dental
 Heartland Family Dental Care
 Heartland Health Foods
 Heartland Human Services
 Heartland Landscaping Inc.
 Heather and Marty - vocal/guitar duo
 Heidanes Hidden Timbers
 Heights Finance Corporation
 Henry Merz
 Heritage Builders of Effingham, Inc.
 Hetzels Overland Transport Inc.
 hibu Inc.
 Hodgson Mill, Inc.
 Hoelscher Concrete Construction Inc.
 Holiday Inn
 Holland Energy, LLC
 Hollar's Design with Style, LLC
 Homebuilders Plus, Inc.
 Hooks Painting Co
 Hoosier Hospitality Consulting LLC
 Horin Family Dental
 HSHS St. Anthony's Memorial Hospital
 I.C. Enterprises, Inc.
 Illinois Farm Business,
 Farm Management
 Innovative Staff Solutions
 Interstate Batteries of South Central IL



image squared marketing

April Member of the Month



Imagine This Marketing Group

November Member of the Month

Irwin Seating Company
 It's Almost Home
 J & J Ventures Gaming LLC
 J&R Collision Centers
 J.B. Esker & Sons, Inc.
 JA FA Photo
 JAD Imports Inc. dba Stadium Cinemas
 James R. Gartner
 James Rutledge
 Jansen Cable Construction, Inc.
 Jansen's Auto Sales
 Jansen's Heating/Air
 Jedco Sales, Inc.
 JFJ Eyecare, Ltd. dba Quantum
 Vision Centers
 Jimmy John's
 Job Match, Inc.
 Joe Sippers Café
 Joe's Pizza & Pasta



John Boos & Co.

June Member of the Month

John Kirby & Assoc.
 John Kroeger, D.M.D.
 John Lewis Concrete Construction Inc.
 John M Johnson
 Johnson Funeral Home
 Journal Gazette & Times Courier/
 Herald & Review
 Justice Grown
 K. Wohltman Construction, Inc.
 KCH Mechanical Inc.
 Keller Convention Center
 Kemper CPA Group
 Ken & Norma Lansing
 Kenworth of Effingham
 Kick Addis BBQ
 Kiefer Landscaping

Kingery Printing Company
 Kirby Risk Electrical Supply Co.
 Koerner Distributor Inc.
 Kremer Pharmacy
 KTD Computer
 L.J. Swingler & Sons Inc.
 La Quinta Inn & Suites
 Lake Land College
 Lake Pointe Apartments
 Lake Sara Area Water Cooperative, Inc.
 Lake Sara Marina
 Lakeland Rehabilitation &
 Health Care Center, LLC
 Lakeside Services
 Land of Lincoln Credit Union
 Larry O'Dell
 Lavender Ridge:
 Dignified Memory Care
 Legacy Harley-Davidson
 Legacy Recreational Vehicles
 Leisure Times Pools & Spas Ltd.
 Lexington Inn & Suites
 Lifeline Christian Books & Gifts
 Linda L. Mitchell
 Linders Limited LLC/McDonald's
 Lions Liquors
 Livin' It Up Transportation
 Local Workforce Investment Area 23
 Longhorn Buildings LLC
 Lustig Custom Cabinet Co.
 Mansfield's U-Stor-It
 Maple Grove Digital Marketing
 Marco's Pizza
 Martin's IGA
 Marxman Excavating
 Mary Kay Cosmetics - Kathy Schroeder
 Maurices
 Maxedon Landscaping
 Mayhood Properties L.L.C.
 MBI Construction
 McDevitt, Osteen, Chojnicki &
 Deters, LLC
 McHugh Hospitality Group, Inc.
 McKendree University
 McMahan Meats



Merz Heating & Air Conditioning Inc.

September Member of the Month

Chamber Members

Me-Th

Mechanovent Corp.
(A New York Blower Co.)
Mediacom Business
Mette's Cabinet Corner Inc.
Meyer Oil Company
Mid America Motorworks
Mid Illinois Equipment Sales
Mid-Illinois Concrete, Inc.
Mid-Illinois Medical Care Associates
Midland States Bank
Midway, The
Midwest Aerial Survey
Midwest Office
Midwest Toppers & Pickup Accessories
Mihlbachler Insurance Agency, Inc.



Milano & Grunloh Engineers, LLC
February Member of the Month

Mill, The
Modern Woodmen of America
Morgan Distributing Inc.
NAPA Auto Parts
National Bank At Effingham
National Rifle Association of America
National Trail Development LLC
New Health Chiropractic
New Hope Church
Niebrugge Lumber Company, Inc.
Niebrugge Plumbing & Electric
Niebrugge's Furniture
Niemerg's Steak House
Noah's Ark Pet Shoppe
Northside Ford-Lincoln
Nova Solutions, Inc.
NOVATEK Medical Rental Group Inc.
Nuxoll Food Center
Office of Congressman John Shimkus
Oldfield Myers Apke and Payne
Law Group, Ltd.
One Hope United
Opportunities For Access
Orr Law, LLC
Owen Motorsports
Pagel Silver Dollar Lanes
Pals Electric Inc.
Pam Crisman
Party Worx

Pat Copple
Patterson Companies Inc.
Patton Printing & Graphics
Peerless of America, Inc
Pepsi Mid America
Personal Finance Company
Pet Wellness Center of Southern Illinois
Phelps Map Service
Piotrowski Studios
Pizza Man of Effingham Inc.
Poehler's Pharmacy
Popeyes Louisiana Kitchen
Premier Broadcasting
Probst Auto Body, Inc.
Promark Advertising Inc.
Prudential Financial
Prudential Financial - Matt Roedl
PURE architecture studio, llc
Pyramid Marble & Granite
Q. Anthony Siemer Attorney
Quad Graphics
RE/MAX Key Advantage
Richard E. Workman Sports &
Wellness Complex
Ring Financial Inc.
Roger's Home Appliance-Direct Maytag
Rotary Club of Effingham
Roy Schmidt Honda
RPM - Reliable Professional
Maintenance Inc.
Rural King
Rush Truck Center - Effingham
Russ Braunecker Cadillac, Buick, GMC
Sacred Heart Parish



Sanitation Service, Inc
October Member of the Month

Sandra Walk, Architect
Sandschafer Electric Inc.
Sarah Bush Lincoln
Sbarro's
Schaefer Appraisal Service
Scheid Diesel Service Company, Inc.
Schmid Auction & Realty
Schultheis Garage and Classics, LLC
Schultz Investment Company
Schumacher Orthodontics
SDS Computers

Sears Ruholl Family Corp.
Security Alarm Corporation
Senator Kyle McCarter
Sentinel Pest Control
ServiceKing Collision Repair Centers
Servpro
Sherwin Williams Company
Sherwin Williams Paint
Shoe Sensation
SI Medical Inc.
Siemer Milling Company



Siemerworks-Crossfit Effingham
July Member of the Month

Smith Moore
Smith Realty Group of Effingham, LLC
South Central FS
Southeastern Illinois Community
Foundation
Southern Illinois Hand Center
Southtown Car Wash
Spectrum Screen Graphics
Sporty's Beverage Connection, LLC
Springfield Clinic Effingham
SSC Chem-Dry
St. Anthony Church
StaffQuick
Stanfield Chiropractic
STANGArts Studio & Gallery Inc.
Startup Effingham Legal Services, LLC
State Representative David Reis
Steffen Heating/Air Conditioning Inc.
Stevens Industries, Inc
Stillwater Enterprises, Inc.
Support Products Inc
Susan Hanfland
SWAN
TAP Business Systems
Tara McAllaster
Taylor Law Offices, P.C.
Ted Koester, D.M.D., P.C.
Teutopolis Auto Sales Inc./
Webster Tire and Auto Service
Teutopolis Community For Progress
TGI Friday's
Thomas Shop, The

Chamber Members

Th-Z

Three Chicks and a Stage
Tick Tock Energy, Inc.
Tingley Insurance Agency, Inc.
The Title Center
Tod Lancaster
Tom Henderson - State Farm Insurance
Total Quality Warehouse
Totten Law Office LLC
Travel Centers of America
Trigg's Flooring
TriPower Towing and Recovery/
Tri Parts Truck Salvage
Tucker Accounting Service Inc.
Turnkey Computer Systems, Inc.
Tuscan Hills Winery



Utz and Associates Architects P.C.
December Member of the Month

United Way of Effingham County
University of Illinois
Extension-Effingham Co.
Van Dyke Metal Culverts, Inc
Vantage Outsourcing
Versatech LLC
Viamedia
Village of Dieterich
Village of Strasburg
Village of Teutopolis
Village Wine & Gift Shop
Villas of Holly Brook, The
Visionary Eyewear, LLC
Vistage Worldwide, Dan Woods
W S Broom & Co. Inc.
W.E.T. Inc.



Waupaca Foundry Inc. Effingham
May Member of the Month

Wal-Mart #0936
Walks Auto Body
Walnut Street Weddings
Washington Savings Bank
WCIA
Weber Optiks
Weber's Clothing & Jewelry
Weis Insurance Agency, LLC
Wellness Loft, The
Wells Fargo Advisors, LLC.
Wente Plumbing & Fire Protection
West & Company, L.L.C.
Whiskey Bend Entertainment
Wiedman Cleaners, Inc.
Wild Rose Boutique
Willowbrook Memory Care Residences
Wireless Stores Inc.
Witt's Smokehouse
Woodlawn Cemetery/
Effingham Monument
Wortman Printing Company
Wright's Furniture & Flooring
WTWO-TV-Illinois Bureau Office
Y Yard Auto and Truck Inc.



Effingham County Chamber of Commerce Staff (L to R.)
JoAnn Sasse Givens, Workforce Development Dir.
Becky Brown, Membership Dir.
Norma Lansing, President & CEO
Angie Lidy, Administrative Assistant

THANK YOU TO OUR PARTNERS IN BUSINESS & COMMUNITY GROWTH



Effingham County Chamber of Commerce
903 North Keller Drive • P.O. Box 643 • Effingham, IL 62401
217.342.4147 • EffinghamCountyChamber.com

The Chamber 360° is published by the Effingham County Chamber of Commerce. Every effort is made to ensure the accuracy of the information in this publication. The Chamber can not guarantee the correctness of all information available to them and assumes no liability arising from errors and omissions.

©Copyright 2018 Effingham County Chamber of Commerce. All rights reserved. Reproducing any part of this book by photocopying, by electronic storage and retrieval or by any other means is prohibited.



2018 Calendar of Events

FEBRUARY

Feb 2 First Friday Luncheon
Feb 7 Executive Espresso
Feb 8 Business after Hours
Professional Park Dr. Bldg. Businesses
Feb 14 Coffee & Connections

MARCH

Mar 2 First Friday Luncheon
Mar 7 Executive Espresso
Mar 7 CEO Experience
Mar 15 Business After Hours
Küche Fine Cabinetry & Design
Mar 22 Business After Hours
Legacy Harley Davidson

APRIL

Apr 4 Executive Espresso
Apr 5 Business After Hours
Dan Hecht Chevrolet-Toyota
Apr 6 First Friday Luncheon
Apr 11 Community Celebration of
Excellence Breakfast
Apr 13 Chamber Radio Day, WCRC
Apr 19 Business after Hours
Merz Heating & Air

MAY

May 1 CEO Trade Show
TBA Business After Hours
Koerner Distributor
May 2 Executive Espresso
May 3 Small Business Expo
May 4 Employee Appreciation
Luncheon
May 9 Coffee & Connection
May 18 Chamber Golf Outing

JUNE

Jun 1 Scholarship Recognition
Luncheon
Jun 6 Executive Espresso
Jun 15 Summer Food Festival
Jun 24-Jul 1 Chamber Destinations
Canadian Rockies by Train
Jun 28 Business After Hours
Crossroads Bank

JULY

TBA Business After Hours
Effingham County Farm Bureau
Jul 6 First Friday Luncheon
Jul 27-28 EffingHAM JAM

AUGUST

Aug 3 First Friday Luncheon
Aug 8 Coffee & Connections
Aug 23 Business After Hours
Washington Savings Bank

SEPTEMBER

Sept 5 Kickoff to Education Breakfast
Sept 7 First Friday Luncheon
Sept 13 Business After Hours
Mette's Cabinet Corner
Sept 25 Top Community Leaders
Under 40 Awards Dinner
Sept 27 Business After Hours
Frisse & Brewster Law Offices

OCTOBER

Oct 3 Executive Espresso
Oct 4 Effingham County
Manufacturing Day
Oct 5 First Friday Luncheon
Oct 11 Business After Hours
Kingery Printing Company
Oct 11-17 Chamber Destinations
Iceland
Oct 12 Chili Fest
Oct 18 Chamber Radio Day, WXF
Oct 27 Downtown Trick or Treat

NOVEMBER

Nov 1 Business After Hours
Village Wine & Gifts
Nov 2 First Friday Luncheon
Nov 7 Executive Espresso
Nov 14 Coffee & Connections
Nov 24 Hometown Christmas

DECEMBER

Dec 5 Executive Espresso
Dec 7 First Friday Luncheon

Add your company events, make reservations, share with others, and set a reminder!
EffinghamCountyChamber.com