

the
CHAMBER

360

Issue 6 • 2017



Photo Credit: Image Squared Marketing

Effingham County Chamber of Commerce

Effingham • Montrose • Teutopolis • Dieterich • Watson
Mason • Edgewood • Altamont • Beecher City • Shumway





**GENERATING A
\$235 MILLION
IMPACT ON OUR
LOCAL ECONOMIES**

Dedicated to our community

Because together, we are better.

At HSHS St. Anthony's, our skilled and dedicated colleagues will always be here for our neighbors. We consider it a privilege to provide exceptional health care close to home and we continue to invest in the wellbeing of our patients and our community. St. Anthony's honors our Franciscan heritage and serves to ensure that our healing care is available to everyone, both now and in the future.

We provide a variety of innovative, preventive and community services that improve the health of our citizens. But one increasingly important way that St. Anthony's keeps our community healthy is by supporting our local and state economy by being a vigorous economic engine for our community and for Illinois.

600 FTEs



St. Anthony's employs over **800** colleagues with 600 Full-time Equivalents (FTE) and is the largest employer

in the area. Hospital payroll expenditures serve as an important economic stimulus, creating and supporting jobs throughout the local and state economies.

PAYROLL

\$44.7 million annually



St. Anthony's colleagues stimulate the local economy through home purchases, groceries, shopping, etc. and generate over **\$107.8 million** in economic activity, creating an additional **866** jobs in our community.

COMMUNITY SUPPORT



St. Anthony's provides a positive impact and enormous benefits to the communities we serve with increased access to care for the underserved, enhanced health and wellness programs, and advanced medical education and knowledge.

\$10.4 million

Included in this amount was \$2.7 million provided for Charity Care at cost and \$6.7 million for unreimbursed care provided under the Medicaid program and other public programs.

CAPITAL



St. Anthony's continues to make capital improvements to update and improve our facilities and purchase new medical equipment. **\$6.6 million in 2014**

HSHS St. Anthony's continually takes steps to boost the local economy and advance health care services offered to the residents of this region. Through capital spending, St. Anthony's generates over **\$15.9 million** for our local and state economy per year.

"HSHS St. Anthony's Memorial Hospital plays a vital role in supporting and strengthening the economy of our community, region and the state, and contributing to the vitality of economic growth," said Theresa Rutherford, President and CEO of St. Anthony's. "We are proud that HSHS St. Anthony's Memorial Hospital is a key cornerstone of the local and state economies."

Purchased GOODS & SERVICES

\$46.4 million



St. Anthony's goods and services purchases ripple throughout the economy to area vendors and businesses. Dollars spent by St. Anthony's generate over **\$111.7 million** for the local and state economy.



EFFINGHAM COUNTY CHAMBER OF COMMERCE

Engaging Business and Community

903 North Keller Drive • P.O. Box 643

Effingham, IL 62401

217.342.4147

EffinghamCountyChamber.com

Table of Contents

Welcome and Introduction	3
Chamber Foundation	6
Growing Your Business	8
2016 Excellence in Business	15
Business Spotlight	16
Chamber Members	29
Calendar of Events	34



Dear Friends,

The Journey – The Vision (use with centennial logo)

As we begin our 100th year of serving the business community, the Effingham County Chamber of Commerce pays tribute to the first leaders of the Chamber who brought the business community together to support business and industrial growth and increase business opportunities.

Since its beginning, the Chamber's greatest resource is our members - the business men and women who work every day to deliver products and services, provide jobs, support local charities and build the community. As you browse through this magazine, you will find their stories and the important role they play in the Chamber's work to promote, introduce and connect people, resources and ideas for business success and community growth.

The highlight of 2016 was being named the Outstanding Chamber of the Year. An honor like this is the result of the support and involvement of businesses, large and small, new and established.

In 2016, the Chamber expanded our commitment to workforce issues, implemented new education and training opportunities and focused efforts on ways to make Effingham County attractive to business investment and families looking for a place to call home.

We have grown and changed with the needs of the community and are proud to be the oldest and largest Voice for Business in Effingham County.

We know that our success is tied to your success. It takes all of us to make Effingham County the very best place to live, work and do business. Best wishes for an outstanding 2017,

Best wishes for an outstanding 2017,

Norma Lansing

Norma Lansing
President & CEO
Illinois Accredited Chamber Executive



Norma & Ken Lansing

Dear Chamber Members,

Leadership is impossible without those willing to follow. I would like to thank the Executive Board members, and the Board of Directors for their support, perspectives, thoughts, ideas and most of all commitment to serving. A very special recognition and thank you goes out to our Committee Vice-Presidents: Dan Patton, Diane Rieck, Tzena Tucker, and Alex Hagler. They have led their committees and corresponding work and have done so with excellence. Two board members that go the extra mile are Matt Cekander, Treasurer and Jenny Walden, Secretary. They have assured that all financial and written documents are completed and correct. Finally, Chair-Elect Mel Stock has been a great support. Mel has a great perspective and vision and I thank you and wish you well during the Centennial Year. As a Leadership Team we had a wonderful journey this year.

I would like to thank President Norma Lansing for her guidance, willingness to take risks and most of all her support. Our office staff of Becky Brown and JoAnne Sass-Givens; these ladies are the heart and soul of the Chamber. They put in countless hours each week to assure that the many programs are prepared, and successful. Ladies thank you for your commitment. This past year started off with Strategic Planning that included members and non-members across the county and a diverse population of veteran and new business owners. As a result of this process the Chamber has a defined Mission, Vision and Goals for each target area and I'm happy to have been able to have led that process.

This year the Chamber put into place a more interactive website that provides opportunities for online professional development to its members. Membership has increased this year due to the inspiration of Diane Rieck and Becky Brown and their new member mentoring program. We transitioned this year from the Morning Buzz to the new Coffee and Connections and this program has been a huge hit for our new and current members. The member favorite Business After Hours continues to be one of the best networking programs going.

The Chamber continues to support and assist in organizing the Annual Manufacturing Day, and also hosted the second Kick-off to Education Breakfast. The EffingHam Jam was bigger and better this year. We continue to be a bright spot locally but also within the State and even an attraction in the Midwest.

Dear Chamber Members,

If we reflected for just a moment on words to describe Effingham County, we might align in our thoughts of it being a prosperous, generous, and faith based community. These recognizable characteristics can be attributed to the efforts of the members of the Effingham County Chamber of Commerce. This is something that is seen year in, year out; and the efforts continue regardless of the challenges that may be faced in the local or national legislative environments.

This year presents a unique opportunity for us to recognize the accomplishments of the past that have helped to provide the strong business foundation in our community as the Chamber celebrates its 100th year. What a fantastic accomplishment for the Chamber to assist its members in overcoming challenges and surpassing outcomes never envisioned when the Chamber was first formed.

It's an honor for me to be a part of the Effingham County Chamber and an even more distinct honor to serve as Chair for the coming year. Jeff Fritchtnitch has guided this organization with his vision; we thank him for his leadership. We can continue the good works he initiated as he led the charge to help support business members. Congratulations, Jeff, on a job well done!

As we enter this year of celebration, we can look with pride to how the Chamber has been instrumental in developing business leaders, offering opportunities to help new businesses get a fresh start, and continuing to listen to the membership to offer support that has evolved with the changing business climate. While

The Chamber continues to enrich relationships between the Chamber of Commerce, Education (high schools, Lake Land College & EIU) and the businesses within our region. As a result of these partnerships the Effingham Regional Career Academy is progressing with the three curricular areas being shared next fall between six county high schools. We are creating opportunities for young men and women to learn skills and be ready to enter the workforce or have greater foundational skills and understanding prior to going to college.

When you put all of these highlights along with all of the other fantastic programs the Chamber provides you become 2016 Chamber of Commerce of the Year. I am proud to have been a small piece of this phenomenal organization. Thank you Effingham County Chamber of Commerce Members for allowing me to be a part of something very special. Thank you and God Bless you all.

Sincerely,

Jeff Fritchtnitch
2016 Board Chairman



the Chamber lays claim to 100 years, it's really a community celebration as it's taken the partnership of Effingham County communities and the Chamber working together to create the success seen today.

While the Board will focus on a number of items over the coming year, we hope to raise greater awareness among the business members and potential members of the many benefits that are available through membership. Our mission is to keep pace with the needs of our membership to help them thrive in business, and to keep our communities strong.

As we begin our centennial year, let's toast our past accomplishments and unite in a vision of growth. We've seen the result of partnerships between communities and the Chamber. It's been that way for 100 years and by working together, we can keep Effingham County a leader in business for years to come.

Sincerely,

Mel Stock
2017 Board Chairman

2016 Chamber Board of Directors



Board Members:

Front Row (L-R): Chris Tingley - Tingley Insurance Agency; Dr. Josh Bullock - Lake Land College; Kelly Roepke - Y Yard Auto and Truck Inc.; Joyce Stock - Siemer Milling Company; Diane Rieck - Express Employment Professionals; Dan Patton - Patton Printing & Graphics; Matt Cekander - Doehring, Winders & Co. LLP; Alex Hagler - Waupaca Foundry; and Jim Niemann - Effingham County Board

Back Row (L-R): Nathan Nohren - Farnsworth Group Inc.; Jeff Speer - RE/MAX Key Advantage; Jeff Fritchtnitch - Altamont Community Unit #10 Schools; Rich Hartke - Teutopolis For Community Progress; Jim Arndt - City of Effingham; Jenny Walden - Consolidated Communications; Kevin Dust - Dust & Son Auto Supplies; and Mel Stock - Midland States Bank

Not pictured: Mike Kingery - Kingery Printing Company; Cory Niebrugge - Niebrugge Lumber Company Inc.; Mike Defend - Crossroads Bank; Gina Willenborg - YBNNext; Billi Jansen - Downtown Effingham Business Group and Craig Nielson - Effingham Regional Growth Alliance

Our Vision:

The Effingham County Chamber of Commerce is a member-driven organization that provides leadership to promote, introduce and connect people, resources and ideas to achieve business success and community growth.

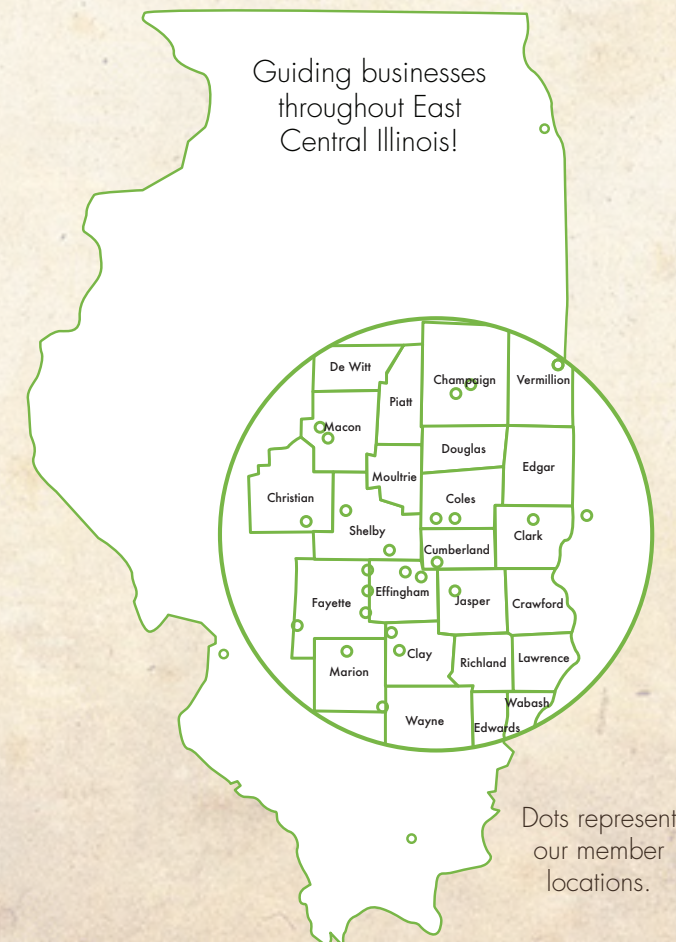
Our Mission:

For the benefit of our members, the Effingham County Chamber of Commerce serves as an advocate for business, delivers innovative programs and services, creates opportunities for businesses to connect and build relationships while partnering with the community to achieve lasting growth.

2016 Chamber Accomplishments

- Illinois Chamber of the Year! Recognized by Illinois Association of Chamber of Commerce Executives
- Illinois Workforce Partner Award Recipient
- Hired full-time Workforce Development Director JoAnn Sasse Givens
- Created Chamber Business Outreach Center, providing mentoring and assistance for start-ups and growing businesses.
- Launched new Network print and online newsletter
- Conducted 3 Year Strategic Planning Initiative
- Created Workforce Skills Task Force to address worker and skills shortage needs of local employers
- Partnering with Illinois Department of Commerce & Economic Opportunity to provide office space for Patrick Pape, their Southeast Region Director
- Hosted first-ever Biggest Loser Community Challenge and hosted Sonja Jones, Season 16 Biggest Loser contestant.
- Created online training opportunities for area employers, including a recent partnership with McKendree University for tuition discounts for Chamber members.
- Launched new Shop Smart. Shop Local. Shop Effingham County campaign.

Effingham County Chamber of Commerce



Dots represent our member locations.



Commitment to Leadership & Community Development

Mission: The Chamber Foundation of Effingham County provides educational opportunities for youth and the workforce to build and strengthen personal and business capacity and foster a commitment to leadership and community development.

The Foundation is a 501(c)3 non-profit. Donations to the Chamber Foundation are tax deductible as a charitable contribution.



2016 Scholarship Recipients



Exclusive Scholarship Sponsor: EffingHAM - JAM

Supporting Education

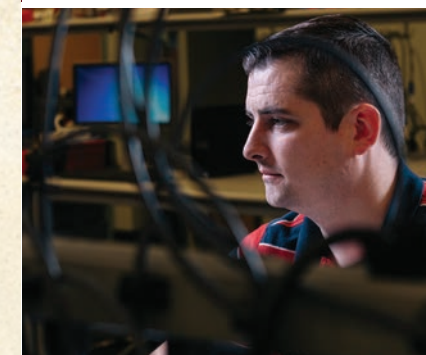
Chamber Community Scholarship Program has awarded \$176,000 to 139 area residents since 1996.



Exclusive Scholarship Sponsor: J & J Ventures Gaming



Exclusive Scholarship Sponsor: BK Resources



New Career Opportunities with Heartland Dental

Looking for a challenging career and personal growth? As we continue to grow, Heartland Dental Home Office has new career opportunities for open, positive and hardworking individuals. Join our growing company as we continue to support over 700 dental offices nationwide with our world-class administrative services.

We are looking for team members with backgrounds in:

- Information Technology
- Marketing
- Accounting
- Graphic Design
- Management
- Web Development
- Legal
- Talent Acquisition
- And Much More!

Apply Today! www.Heartland.com/HomeOffice
or Call 217-540-5100



Stay Connected
With Us

Thanks to Ameren Illinois for their support of the Chamber Foundation of Effingham County with a Charitable Giving Grant in 2016!



EffingHAM - JAM



DG Eating Contest



Hometown Throwdown Competition



EffingHAM JAM -
Koerner Distributor Presenting Sponsor
Representative Troy Greene



Kids Demo Derby



Hometown Throwdown Grand Champions!

2017 EffingHAM - JAM Dates: July 28-29, 2017



Every day you are striving to be at your best, but what holds you back?
Discover the key to unlocking your personal potential and build extraordinary organizational performance and corporate culture.

Investment in Excellence is The Pacific Institute's powerful flagship curricula, delivering tools for growth and change in a variety of media formats. It provides easy-to-understand and easy-to-implement tools to change attitudes and beliefs which produces greater results and higher performance. Participants gain real insights into areas of personal, professional and organizational growth opportunities through professionally facilitated study and discussion.



Effingham County Vision 2020 will be hosting an Investment in Excellence Class February 13, 14 and 23, 2017 Keller Convention Center \$400 per person

Deadline: January 31, 2017

Register online at www.effinghamcountychamber.com



Effingham Regional
INCUBATOR NETWORK

Join the next generation of entrepreneurs and consider starting up your own business!

The Effingham Regional Incubator Network provides:

- Shared office space
- Technology
- Entrepreneurial coaching
- Educational experiences

The goal of a business incubator is to nurture the development of entrepreneurial companies and help them survive and grow during their start-up period when they are most vulnerable.

We currently have five Incubator locations:
Effingham, Altamont, Dieterich, Teutopolis & Newton.

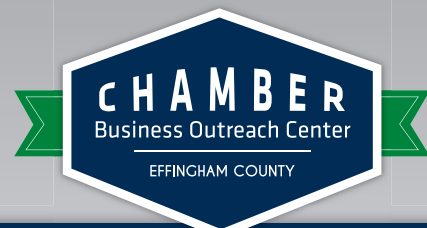
Contact the Effingham County Chamber of Commerce for more information at

217.342.4147



Find us on Facebook:
Effingham County Incubator Network

This Project Powered By:



To Help Entrepreneurs and Business Owners Reach Their Full Potential

FREE AND CONFIDENTIAL BUSINESS CONSULTING!

- Our team of professional, knowledgeable and experienced business mentors are available to provide general advice on business planning, start-up, management and growth
- These subject matter experts can help you launch your business idea or take your existing business to next level results.
- Referrals are made to professional assistance, as needed

ACCESS TO OUR ONLINE RESOURCE GUIDE

Our online Business Resource Guide can help connect you to the right resources and tools, including databases, how to start a business information and with connections to local contacts needed for legal, accounting, financial, insurance and other business needs.



EFFINGHAM COUNTY
CHAMBER OF COMMERCE
Engaging Business and Community

Contact Chamber President & CEO Norma Lansing to learn more about the Chamber Business Outreach Center at nlansing@effinghamcountychamber.com or call 217.342.4147.

www.effinghamcountychamber.com



We are

Local leaders committed to our region's growth and prosperity

Economic development is a collaborative process, resulting in an environment that benefits our communities, as well as our businesses. Join us in this mission to help cultivate prosperity in the Effingham region.



The Alliance

Effingham Regional Growth Alliance

effinghamregionalalliance.com

217.342.4214



We engage in Conversations that impact the Business Community

Chamber Leads Efforts to Establish Regional Career Academy



Innovation in education in Effingham County has taken a step forward with formation of the Effingham Regional Career Academy's first Board of Directors and establishment of a timeline for completion of a state-of-the-art career and technical training center that will accommodate a high school curriculum along with technical skills training for current and returning adult workers.

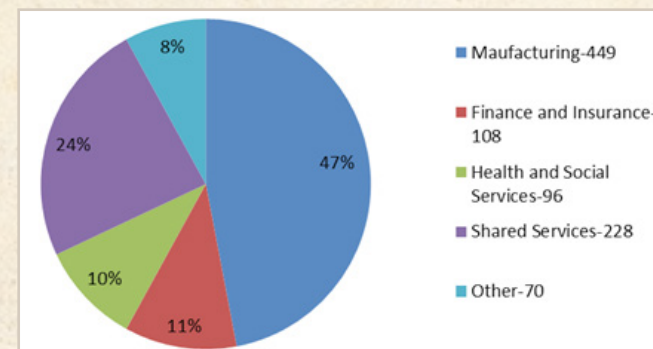
The Board reflects the collaboration of business, education and community working together to maximize the resources available to our students and residents. Students will be able to get a jump start on their career paths and development needs of incumbent workers will be met by creating pathways to sustainable employment.

Starting with the Fall Semester of the 2017-2018 school year, county high school students will have the opportunity to participate in a number of shared classes in manufacturing, welding and agriculture.

Want to know more about the Regional Career Academy? Contact Chamber President & CEO Norma Lansing at 217-342-4147 or nlansing@effinghamcountychamber.com.

Effingham County Employers Will Be Hiring Nearly 1,000 New Employees in 2017

A recent survey of local employers reflects the employment sectors with the most new hires anticipated for 2017 are Manufacturing, Finance and Insurance, and Health Care and Social Services. Non Industry positions or shared positions are also needed. The percentages and number of positions is shown in the graph (above, below, left, right, wherever it is!)



Workforce Readiness Skills Most Requested by Local Employers :

- Effective Communication/Customer Service
- Professional Work Ethic
- Handling Objections & Complaints
- Critical Thinking & Decision Making
- Leadership
- Teamwork

Chamber Hires Full-Time Workforce Development Director



Building and Improving the Talent Pipeline

2017 Workforce Development Initiatives will include:

- 5th Annual Effingham County Manufacturing Day, Thursday, October 5
- Recruitment Events to connect employers with job seekers
- Internship Program to connect employers with student learners
- Training on workforce readiness and technical skills

Whether you work from the Kitchen or the Boardroom, we are your Resource



Tech Tuesdays



Dol Seminar: Wake Up to the Issues Sessions



Nationally Known Speakers Like Paul Akers



LEAN Symposium



Training. Simplified

Need Training for your team?
We have FREE Training Certificates available on a wide range of subjects.
Contact us for details!

Strengthen Your Workplace With Affordable Online Training
Our partnership with Coggno.com, provides our members with access to the premier internet source for thousands of online training courses.

McKENDREE
UNIVERSITY

THE FUTURE BELONGS TO YOU

Turn impossible into...
IMPOSSIBLE
MAKE YOUR MARK

FURTHER YOUR EDUCATION with
McKendreeOnline.com

10% TUITION DISCOUNT

EXCLUSIVE OFFER for
CHAMBER MEMBERS

Chamber Cooperative Energy Buying Program

Cost Savings for your Commercial Energy and Natural Gas needs

Benefits of the Chamber Energy Buying Program:

- Low Fixed Rate Monthly Bills
- Long-term Budget Stability
- Group Buying Power
- Customer Service Assistance takes the headache out of billing errors and service issues
- Experienced Energy Professionals handle the details
- Free Energy Education and Training Programs



Our Energy Partners:



We are helping area businesses save hundreds of dollars on their energy bills!
Call (217) 342-4147 to learn more.

We're on your team!

Chamber Ambassadors:

Front Row (L-R): Mike Schabbing, Global Technical Systems, Inc.; Marty Stock, Homebuilders Plus, Inc.; Del Wortman, Wortman Printing Co.; Kathy Schroeder, Mary Kay Cosmetics; Tonya Siner, 97.9 XFM-KJ Country 102.3; Jo Huskey, Enterprise Dynamics, Inc.; Carol Hourigan, Three Chicks and a Stage

Back Row (L-R): Jim Hecht, Dan Hecht Chevrolet-Toyota; Steve Will, Dieterich Bank; Jeff Muhlbachler, Muhlbachler Insurance Agency, Inc.; Randy Jones, Washington Savings Bank; Greg Schumacher, Ameren Illinois; Jay Buehnerkemper, Dieterich Bank; and Jerry Jansen, Century 21-Realty Concepts



Check out our Shop
Effingham County Facebook page



Healthy People. Healthy Companies. Healthy Communities!

Sonja Jones, Season 16 Biggest Loser contestant helped kickoff the Challenge

67 teams with a total of 249 people representing over 35 companies!

One local team tied for 1st nation-wide!

Congratulations to: Debra Barrett, Jordan Shields, Rachael Boone & Ronda Jansen



Helping businesses grow...

EFFINGHAM COUNTY
CHAMBER OF COMMERCE
Engaging Business and Community

...one member at a time.

www.effinghamcountychamber.com

Refer a member...
and receive special offers from your Effingham County Chamber of Commerce.

Complete this card and email to:
bbrown@effinghamcountychamber.com or fax to (217) 342-4228.

Your name: _____

Your phone # _____

or email: _____

Name of business you are referring: _____

Contact number: _____

Contact email: _____

Scan here to join online!

GROW YOUR BUSINESS' MARKETING

NETWORK
Transportation, Travel and Tourism

Distributed to over 1,400 local businesses, the Chamber's "Network" Magazine has tremendous exposure in Effingham County!

Call The Chamber To Advertise:
217-342-4147



Free online tools for Chamber members to get noticed!

- Job Postings • Calendar of Events • Your business profile
- Hot Deals: Post your own & view other member's deals!
- It's mobile! Scan the QR Code on Page 34 to download the app and take these benefits wherever you go!

Get the most out of ChamberMaster online training and ChamberMaster University sessions are available



2017 TRAVEL DESTINATIONS

Don't miss these great vacation opportunities!



Peru & Machu Picchu

April 18 - 26, 2017

Highlights include:

- Machu Picchu Excursion
- Lima City Tour • Cuzco City
- Local "Casa" Hosted Dinner
- The Sacred Valley • Pisac
- Awanakancha Breeding Center

Reflections of Italy

October 9 - 18, 2017

Highlights include:

- Rome • Colosseum
- Assisi • Perugia • Siena
- Florence • Chianti Winery
- Venice • Murano Island
- Milan



For More Info, Call: 217-342-4147 or email: chamber@effinghamcountychamber.com

www.EffinghamCountyChamber.com



Waupaca Foundry, Inc. – Effingham Illinois, formerly known as Hitachi Metals Automotive Components, machines

precision automotive components for the automotive industry. Waupaca Foundry, Inc. is committed to relentless improvement, forward-thinking sustainability initiatives, and providing a reliable experience to the millions who use our products every day.

To All The Future Leaders Of Our Effingham County Community



get involved
with both YBNext & the Chamber



Annual YBNext Membership:

\$50 for Chamber Members

\$75 for non-Chamber members



Converge - (v.) to move toward one point and join together: to come together and meet

Business After Hours May 4th, 2017

Mark your calendars—**Converge Business After Hours** is back! Help us celebrate **Small Business Week** with our regional and telecommuting members who are unable to hold a traditional BAH due to space, location, and/or other factors.

Join us for an evening of **socializing, hors d'oeuvres, raffle prizes, and drinks.**

Businesses interested in participating in this special Business After Hours event can contact Becky at 217-342-4147. Space is limited and we already have an exciting list of participating businesses, so be sure to call today!

SMALL BUSINESS
heartbeat of our community





2016 Excellence in Business Recipient - Probst Auto

YBNEXT Charitable Giving

Taylor Law Offices - Fall Social Team Spirit Award

Midland States Bank - Fall Social Tailgate Master Award

2016 Employee of the Year - Jim Verdeyen, Y Yard Auto-Truck

2016 Excellence in Business Recipient - J & J Ventures

Dr. David Glassman, EIU President

State Representative David Reis

Jim Schultz, CEO, Intersect Illinois

Dr. Josh Bullock, President, Lake Land College

Congratulations to the 2017 Recipients

WRIGHT'S FURNITURE & FLOORING

Offering quality home furnishings, helpful advice and friendly service has made Wright's Furniture and Flooring in Dieterich one of Central Illinois' most popular furniture stores. For nearly 130 years, the Wright family has served customers with the belief that quality is remembered long after the price is forgotten.

If it weren't for a midnight deal struck in 1889, Wright's Furniture and Flooring might never have been. George W. Wright traded his plans to move to Arkansas for an offer to buy the local furniture store and funeral home. The family still operates the furniture business in Dieterich and is one of the biggest sources of retail sales revenue for the community.

It was under George's grandson Cedric Wright's leadership that the store expanded from its original storefront on Main Street to its current footprint of over 50,000 square feet of retail space with an inventory that includes the most popular brands from furniture, flooring, mattresses and home décor. In 1997, the business expanded into interior design with the addition of Wright At Home Interiors, located in Effingham.

Customer service is at the top of the list of reasons why Wright's Furniture and Flooring has stood the test of time. From an annual Ladies Night Out event with educational decorating seminars to tours



for area high school home economics and coloring contests for area grade school children, Wright's finds ways to keep visitors coming back into the business.

Community involvement is also an important part of the business. Their efforts have garnered a number of awards, from sales awards from their vendors to Retailer of the Century by the Illinois Retail Merchants Association and the Business Ethics and Social Involvement Award by East Central Illinois Development Corporation.

The furniture business is now in the hands of the fourth generation of the Wright family with brothers Tom and John at the helm and Tom's son Alex represents the fifth generation in the business. It is hoped that John's children will also help the business grow into the next hundred years.

STEVENS INDUSTRIES

The Stevens Industries story is like many others that make Effingham County unique, starting out with one man making wood products in his father-in-law's garage and growing into the largest manufacturer of commercial casework and architectural millwork in North America.

Charles Stevens made Effingham County his home in 1956 and literally built his business from the ground up, hand-digging footings for his first building along Main Street in Teutopolis. By the early 1970s, a new larger facility was built just west of their existing building and Stevens Industries was born.

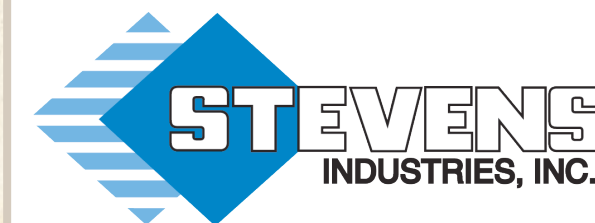
Continued growth necessitated the need for a strong sales team and in 1970, Tom Wegman joined the company. Together Charles and Tom built a strong, dynamic organization with an international presence. In the late 1990s, the Chuck and Tom chose to protect the company's future by entrusting its care to the very people who helped create it, the employees.

Stevens Industries is now 100% Employee Owned, with employees able to own stock after just one year of employment. The company has a growing workforce of 500 with more than 80 new positions added in 2016 and new employment opportunities expected in 2017. More than 90 employees of the 500-employee workforce have been with the company for more than 20 years.

For the past 60 years, Stevens Industries has provided innovative engineering, design, and craftsmanship, along with expertise that leads to cost-effective solutions for their global customer base.

They provide the total package to meet their customers' needs through management, engineering and design, manufacturing and installation.

Their innovative laminate products are used in medical, educational, retail, hospitality and commercial settings and produced from their 430,000 square foot plant in Teutopolis. They are the leading



manufacturer of early learning and childcare furniture. Products produced at Stevens Industries are utilized by companies such as Mercedes Benz, Kohls, Walgreens, H & M and Holiday Inn, among others and their work has been featured in Surface & Panel, FDM Cabinet Maker and Woodworking Network magazines.

Investing in the success and well-being of individuals is a priority for Stevens. In 2015, an on-site medical clinic was created where a nurse practitioner seeing patients two days each week. Associates are also eligible for tuition assistance to further their education.

Stevens Industries is an integral part of the Teutopolis community and Effingham County as one of the top 5 employers in the county. The company and its employee-owners are involved in their community, give back through contributions to many charities and school programs and support civic growth through active involvement in the Chamber.



Past Excellence Recipients

2011	2012	2013	2014	2015	2016
Midland States Bank Y-Yard Auto & Truck, Inc	Patterson Technology Center Legacy Harley-Davidson	Heartland Dental Siemer Milling Company	Dieterich Bank Versatech, LLC	Dan Hecht Chevrolet-Toyota Martin's IGA	J & J Ventures Gaming Probst Auto Body

Effingham New Car Dealers

Russ Braunecker
217-347-0505
www.effinghamgmc.com

Dan Hecht
217-342-4111 or
www.danhecht.com

Goeckner Bros
217-342-3355
www.goecknerbros.net

NorthSide
Ford • Lincoln
(217) 342-3929
www.effinghamford.com

Roy Schmidt Honda
217-342-8600
www.royschmidthonda.com

Crossroads Bank

Visit one of our two locations here in Effingham, Illinois
2000 SOUTH BANKER STREET • 806 NORTH KELLER DRIVE
Member FDIC LOCALLY OWNED, LOCALLY MANAGED, LOCALLY OPERATED
WWW.CROSSROADSBANK.COM FACEBOOK.COM/CROSSROADS.BANK.EFFINGHAM.IL

Thelma Keller Convention Center at the Holiday Inn

Illinois' Premier Meeting and Conference Facility offers today's meeting participants a relaxed atmosphere, quality service and tempting cuisine designed to make every meeting impressive and productive. No matter what size event you are planning, we have a room just right for your needs!

1202 N. Keller Drive • Effingham, IL 62401 • www.kellerconventioncenter.com
217.347.5115 • 888.875.5115 • FX: 217.347.8757

KOERNER DISTRIBUTOR, INC.

FINE WINES • SPIRITS • MALT BEVERAGES
Your Hometown Distributor
KoernerDistributor.com
(217) 347-7113

First Neighbor Bank

First Neighbor Bank has proudly served our local communities for over 125 years as a locally owned bank that offers a variety of banking and other financial services with branches in Toledo, Greenup, Newman, Charleston, Neoga, Casey and Mattoon.

FNB also offers crop insurance along with other insurance services and has been a long time provider of income tax preparation and accounting services in the communities they serve.

In addition to their existing insurance office in Neoga, the bank is proud to announce the recent opening of First Neighbor Insurance Agency in Effingham.



Curious about what FNB can do for you?
Visit firstneighbor.com or call them at 877.865.3361.

First Neighbor Bank is located at 120 East Section Ave, Effingham, IL 62401.

Livin' it Up Transportation

Based in Altamont, Livin' it Up Transportation provides party bus services for weddings, bachelor parties, wine tours, family gatherings, parties and any festive occasion, including themed bus designs including breast cancer awareness, camouflage and patriotic motifs.

Established in 2015, the family owned and operated business prides itself on providing clean buses and reliable services, with buses ranging from 15 to 40 passengers and additional amenities such as charging stations for phones and equipment to provide music on board.



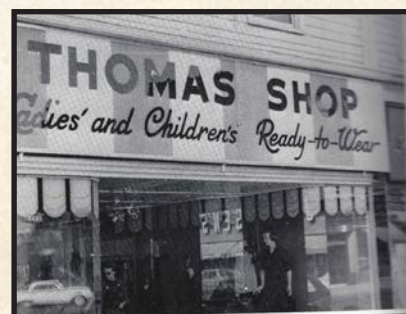
Got a big event coming up?
Visit www.livinituptransportation.com or email them at livinituptransportation@gmail.com.
Reservations can also be made by calling 217.821.9083.

Livin' It Up Transportation is located at 402 N. 8th St. Altamont, IL 62411.

The Thomas Shop

Proudly located in downtown Effingham since 1936, The Thomas Shop provides personalized service for shoppers looking for quality clothing, shoes, alterations and more at reasonable prices.

Family-owned for 80 years, The Thomas Shop adheres to the four 'F's of faith, family, fashion and friendship in serving Effingham County and the greater community. Find everything for women's clothing from brands such as BCBG, Frank Lyman, Windridge to the latest formal wear fashions. The store also carries Brighton jewelry and accessories and high quality orthopedic shoes in popular brands like Dansko, Birkenstock, Gabor and Mephisto to casual sandals from YellowBox, Ipanema and more.



Haven't checked out The Thomas Shop?
Follow them on Facebook at [thethomashopdowntowneffingham](https://www.facebook.com/thethomashopdowntowneffingham) or call them at 217.342.2733.

The Thomas Shop is located at 200 W. Jefferson Ave, Effingham, IL 62401

Startup Effingham Legal Services, LLC

Founded by the daughter of local small business owners, Startup Effingham Legal Services, LLC is a provider of legal services for area businesses including tax law, contract management, regulation compliance and so much more. Their mission is to encourage local ownership of business and strong economic growth for the community.

Founder Sarah Ruholl Sehy lived and worked all over the state of Illinois before returning to her home community and attending the University of Illinois College of Law. After being admitted to the Illinois Bar Association, she established Startup Effingham Legal Services as a solo practice in 2016.



Interested in knowing more?
Visit www.startupeffingham.com or email them at sruholl@gmail.com.

Startup Effingham Legal Services, LLC is located at 105 E. Virginia Avenue, Effingham, IL 62401

HSHS St. Anthony's Memorial Hospital

With roots that are 141 years deep, HSHS St. Anthony's Memorial Hospital remains on the cutting edge of technological advancements and delivering quality patient care while utilizing its core values of respect, care, competence and joy.

In August 2016, the hospital welcomed 10 third-year medical students from Liberty University College of Osteopathic Medicine (LUCOM) in Lynchburg, Virginia as part of a partnership to learn alongside hospital colleagues and medical staff. These 10 students chose Effingham and St. Anthony's as their clinical sites for this year. The goal of the program is to train primary care physicians with the hope that they will return to practice in this region. The hospital is confident that this is a next step in meeting the health care needs of the community into the future.



St. Anthony's is one of 14 hospitals in Hospital Sisters Health System (HSHS), a health care ministry with hospitals and multi-specialty medical groups in Illinois and Wisconsin. HSHS is sponsored by Hospital Sisters Ministries, and Hospital Sisters of St. Francis is the founding institute. St. Anthony's is a 133-bed licensed acute care facility, providing inpatient, ambulatory, home health and hospice, with more than 800 colleagues and over 70 physicians on its medical staff.

HSHS St. Anthony's Memorial Hospital is located 503 North Maple St, Effingham, IL 62401.

First National Bank of Waterloo

Located in downtown Effingham, First National Bank of Waterloo offers community banking, full service banking, loans, investments, mortgages and more to help our area grow and thrive.

With over 100 years and nine locations in Central and Southern Illinois, First National Bank of Waterloo knows how to commit to its customers and our community. Come visit on May 6th for a free community shred day from 10:00 am to 1:00 pm.



Looking to learn more?
Check them out at www.fnbwaterloo.com or call them at 217.342.3200.

First National Bank of Waterloo is located at 210 E. Fayette Ave, Effingham, IL 62401.

Solan Chiropractic

Established in 2002, Solan Chiropractic offers specific conservative health restoration care for the greater Effingham County area. From restoring normal function to helping patients live a more pain-free life, Solan provides a full-range of healthcare.

In 2016, Dr. Kevin Borntreger joined the Solan Chiropractic family to further assist our community from birth to gracefully aged.

Curious about what Solan Chiropractic has to offer? Visit www.solanchiropractic.com or call them at 217.347.5812.



Solan Chiropractic is located at 212 N. 4th Street, Effingham, IL 62401.

Poehler's Pharmacy

A telepharmacy extension of the Medicine Shoppe in Newton, Poehler's Pharmacy has opened in Dieterich to offer a variety of services to community residents including remote dispensing, drive-up service, free vitamin program for children, immunizations and a small selection of over-the-counter medicines.

"We are very excited to serve the Dietrich community," noted LaDonna Poehler, Owner/Operator. "We will be hosting a Business after Hours and ribbon cutting later this spring to introduce ourselves to the community."



Want to know more about Poehler's Pharmacy? Email them at 1339@medicineshoppe.com or call them at 217.925.2838.

Poehler's Pharmacy is located at 203 S. Main St. Suite A, Dieterich, IL 62424.

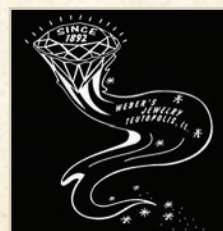
Weber Clothing & Jewelry

Since 1892, customers of Weber's Clothing & Jewelry know they will receive quality products, competitive pricing and outstanding service, and with a member of the Weber family there to greet them.

Brothers Kevin and Kurt Weber operate the jewelry business, while Cousin Tony Weber owns and manages the clothing business in their side by side business location along Route 40 in Teutopolis.

Weber's Jewelry is a full-service jeweler offering fine jewelry and diamonds, watches, gift items and custom styles we well as jewelry, watch and clock repairs. They are committed to making every customer feel at home

with their personalized service and our classic to cutting edge jewelry designs.



Weber's Clothing prides themselves on helping their customers find their style. They provide high quality dress, business and casual men's clothing and shoes, tuxedo rental and accessories. There are tailors on staff for full-service alterations.

Need something for the special someone in your life? Enjoy the selection at www.webersjewelry.com or www.webersclothing.com.

Weber Clothing & Jewelry is located at 114 E. Main, Teutopolis, IL 62467.

Hollar's Design with Style, LLC

Hollar's Design with Style, LLC offers home décor and so much more to the Effingham County area. With its focus on good quality for good value, Hollar's has everything you need for that new home build or a home makeover project.

Hollar's offers residential and commercial carpet and flooring through their affiliations with popular brands such as Shaw and Protect-All. They also offer custom cabinetry, countertops and backsplash materials to window treatments, bedding, pillows and accessories.



So whether you are making over a room or building on a new addition, Hollar's award-winning design team can fill your need with competitive pricing, without compromising quality.

In the market for a new look? Give them a call them at 618.483.5750.

Hollar's Design with Style, LLC is located at 4B Do It Drive, Altamont, IL 62411

Patton Printing & Graphics

Over the past 30 plus years, Patton Printing and Graphics has offered their customers everything from design services to direct mail, postcards to newsletters, and promotional products. A full remodel and expansion early in 2016 has increased their capacity to deliver quality products on time.

The company has grown into a full service business image provider using the latest technology to produce high quality products. They are proud to source over 85% of all the labor, supplies, raw materials, and resources used locally.

Their expansion of production space has improved production and efficiency and equipment upgrades have included state-of-the-art digital printing equipment that is the only one of its kind in downstate



Illinois, giving the advantage of offering top-of-the-line digital printing to our area at affordable prices and high quality short run color print.

Their promotional products gallery provides a larger sampling of items available to help our customers market their companies.

Owners Dan & Madonna Patton invite you to stop by their facility at 902 W. Wabash Avenue in Effingham or visit them online at www.pattonprinting.com. They can also be reached at 217.347.0220.

Owen Motor Sports, Inc.

Owen Motor Sports is the premiere full service, multi-line, multi-location, sales and service motor sports dealership in Illinois, offering Polaris, Honda, Kawasaki, Suzuki, KTM, Victory, and Slingshot brands as well as a full pre-owned department at locations in Effingham and Charleston.

The company purchased the R & R Powersports, Inc. facility on Highway 33 northwest of Effingham in late 2016 and completed an expansion creating a remodeled showroom with space for new units and accessories. Their fully certified service department and industry leading sales and parts departments plus financing and insurance processing is designed to fulfill their mission to provide superior service to customers' needs in every aspect of the business.



Watch for their Grand Opening in Spring 2017, along with our new webpage and Owen Motor Sports app.

Want to know more? Check them out at www.owenmotorsports.com or call them at 217.8682.2550.

Owen Motor Sports Inc is located at 10333 E. State Hwy 33, Effingham, IL 62401.

Kremer Pharmacy

Established in September 2012, Kremer Pharmacy is a full-service retail pharmacy located in Teutopolis, next door to Runde Clinic. They offer not only prescription medications but also offer vaccinations, over-the-counter medications, assistive devices and so much more.

Kremer Pharmacy makes it easy for Effingham County residents to get their medical needs filled with walk-in and drive-thru orders as well as online ordering, mobile app ordering with text and/or email notifications of orders.



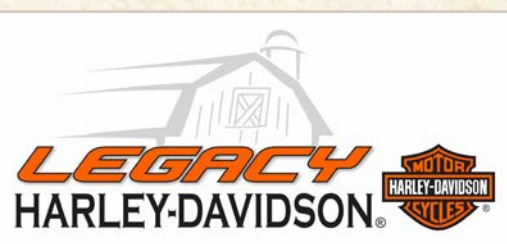
Haven't checked out Kremer Pharmacy?
Check them out at www.kremerpharmacy.com
or call them at 217.857.3000.

Kremer Pharmacy is located at
206A N. Pearl St, Teutopolis, IL 62467.

Legacy Harley-Davidson

Located on Effingham County's oldest farm homestead in a facility commonly known as The Harley Barn, Legacy Harley-Davidson boasts a one-of-a-kind dealership providing products and services in the fair and friendly manner consistent with the Harley-Davidson lifestyle.

Legacy Harley-Davidson holds many charitable events and benefits throughout the year to benefit local area charities. Find out more about upcoming events on their website or Facebook page.



Are you ready to ride?
Visit Legacy at www.legacyhd.com
or call them at 217.342.3494.

Legacy Harley Davidson is located at
1315 Althoff Dr, Effingham, IL 62401.

Wortman Printing Company

Wortman Printing Company has been serving the Effingham and surrounding area(s) for over 26 years. Founded by Del Wortman in October of 1990 the business concentrated on traditional commercial offset printing.

This adventure began at Del's then residence, 409 N Henrietta. The business was started with on Macintosh SE computer, one small duplicator press an old lever cutter and a tabletop folder. Del was the only employee and he handled all phases of the business during the first year of operation.

In 1991 Wortman Printing expanded and moved to 806 N Third Street also in Effingham. This location had approximately 1600 square feet, which allowed the business to expand in both personnel and equipment.

Again in 1996 Wortman Printing needed more room to grow so a new location with 7250 square feet was purchased located at 1713 S Bankers street where we are still doing business today.



There have been many changes in the printing industries over the last 26 years, yet we welcome any challenge or change that may be ahead of us. The changes in this industry have made us a stronger more focused company that we have become today.

We offer graphic design services, digital printing, variable data printing and traditional offset printing. We cater to the small, medium and large business looking for reliable printing at a fair price. Our company's goal is to offer great customer service, quality printing with prompt turnaround times to make your printing purchase a pleasant experience.

Learn more about WPC
Check them out at www.wortmanprinting.com
or call them at 217-347-3775

Kenworth of Effingham

After 51 years in business, Kenworth of Effingham is the tri-state area's premier privately owned company specializing in providing top quality Kenworth trucks, parts and services.

Palmer Trucks is a one-stop shop for new and used truck sales, parts and service and recently opened their first Illinois location along Outer Belt West in Effingham.



Curious about what Kenworth of Effingham
can do for you?
Visit palmertrucks.com
or call them at 217.347.2242.

Mary Kay Cosmetics

While Mary Kay Cosmetics is changing the lives of women and children around the world, local Mary Kay representative Kathy Schroeder is working to enrich the lives of the women she touches with customized skin care and color cosmetics and gifting services to help clients celebrate special occasions.

Schroeder started selling Mary Kay products in 1985 and has excelled in the business over the last 35+ years with a recent Top Sales Award. Her unit, which consists of other Mary Kay consultants, has been awarded the Circle of Achievement five times, 15 signature Mary Kay cars and 17 diamond rings.

Schroeder is active in many community organizations and was instrumental in establishing the Illinois State Police Memorial on the courthouse square in downtown



Effingham in 2016 to honor two fallen police officers from the area. She is an active Chamber member and has served as a Chamber Ambassador for 15 years. Schroeder credits the Chamber with helping her establish her business and was recognized as Chamber Member of the Month in 2011.

Learn more about Mary Kay Cosmetics and
Kathy Schroeder at
www.marykay.com/kschroeder
or contact her at 217-821-1422.

BAHRNS EQUIPMENT, INC.

Solid businesses start with solid leadership and with an individual like Stanly Bahrns at the helm, the opportunity to celebrate 50 years in business in 2016 was a dream started back when Bahrns obtained his first job out of high school at Virgil Althoff's Garage in the late 1950s.

Stan Bahrns' journey to business owner and entrepreneur took a route that included a business venture in Tennessee, a shop foreman job in Beecher City, a tour of duty in the military and back to Effingham where he purchased the Althoff Garage. Today, the auto mechanic shop along Fayette Avenue has given way to a material handling, lawn and garden sales and service, equipment supply company and rental center operating out of a complex along South Banker



Bahrns Equipment represents some of the most notable brands in their industry including Toyota, Honda, Toro, Stihl, Grasshopper, Kubota and more and maintains multiple websites directed toward their customer base.

Learn more about the Bahrns' story by stopping
by their facility at
1708 South Banker Street in Effingham,
calling 217-342-2909
or visiting www.bahrns.com.

Helping protect the important things.
AUTO • HOME • FARM • COMMERCIAL
LIFE • HEALTH • UMBRELLA




 Rose Ruhoff
Insurance Agency Manager


 Mark Behms


 Paula Cramer


 Brittany Campbell


 Austin Hernandez

FNB FIRST NEIGHBOR INSURANCE AGENCY
 120 E. Section Ave • Effingham 217.342.3900
 223 E. 6th Street • Neoga 217.895.2770
FirstNeighborInsurance.com

* Insurance products available through First Neighbor Insurance Agency are: Not a Deposit, Not Guaranteed by the Bank, Not FDIC Insured, Not Insured by Any Federal Government Agency, Not a Condition to Any Banking Service/Activity.

"All of us, working together for you."

Bonutti Clinic



Offering the best in musculoskeletal care, the Team at the Bonutti Clinic is at the very forefront of advancing orthopedic care - for you.

Urgent Care
 Orthopedic Surgery
 Occupational Health
 MAKOplasty® Robotic Hip and Knee Surgery
 Cervical & Spine Surgery
 Sports Medicine
 Outpatient Therapy
 Research and Diagnostics

Orthopedic Surgeons
 Peter Bonutti, MD/FAAOS/FACS
 Timothy Gray, MD/FAAOS
 Frank Lee, MD/FAAOS
 Didi Omiyi, MD
 Bernard Rerri, MD/FRCS(C)

Occupational Medicine
 Karl Rudert, DO/FACEP

217-342-3400 1303 W Evergreen Ave • Effingham, IL
www.bonutticlinic.com

Medicare • Blue Cross Blue Shield • Healthlink
 MultiPlan • Health Alliance • Coventry/Aetna

HODGSON MILL Mercantile

- Family-Owned & Locally Made Foods, Crafts & Gifts
- Healthy Products Made in Effingham, IL
- Cooking Classes



1001 Ford Avenue, Effingham, Illinois 62401
 217.347.6455 (MILL) • HodgsonMill.com

York Acres
 Growing Family Subdivision
 Lots become free with tax rebates
 Contractors Welcome!
 (5 lots remaining)
Village of Strasburg
 Contact Linda at 217-644-3007

Century 21 Realty Concepts
 111 S. Henrietta
 Effingham, IL 62401

Jerry Jansen, GRI
 Bus: 217-342-6080
 Res: 217-868-5370
 Cell: 217-343-3915
jerry@jerryjansen.com
www.century21realtyconcepts.com
Each office is independently owned and operated.



JANSEN'S Heating & Air
"Your Comfort Specialist"

800-772-3920 (217) 347-5223
 11984 E US HWY 40
 Effingham, IL 62401
www.JansensHeating.com

800-434-3498
 Pana / Taylorville

GEOTHERMAL Done Right

SECURITY ALARM

Tom Kelly
 217-343-0800
tkelly@securityalarm.com

1511 E. MAIN
 P.O. BOX 665
 SALEM, IL 62881
(618) 548-5768
 FAX (618) 548-2064

Andes HealthMart PHARMACY

Caring for you and about you

805 West Fayette
 Effingham, IL 62401
andeshealthmart.com

217-342-9393
 Mon-Fri: 7am-6pm / Sat: 8am-1pm

Prudential
 The Prudential Insurance Company of America

Richard J. Hartke, Financial Professional
 217-347-8801
 210 S. Second Street, Suite A - Effingham, IL 62401

EJ WATER COOPERATIVE, INC.
 Helping Grow Families, Businesses & Communities.

108 S. Main St.
 Dieterich, IL 62424
 217-925-5566
www.ejwatercoop.com



THE VILLAS OF HOLLY BROOK - EFFINGHAM
 ASSISTED LIVING

Adra Baldwin
 Executive Director
 904 W. Evergreen Avenue
 Effingham, IL 62401
 217-342-2345 office
 217-342-2351 fax
veff.adm@meridiansenior.com

MERIDIAN SENIOR LIVING

EFFINGHAM *Print and Digital Marketing Solutions for Your Business*

DAILY NEWS
effinghamdailynews.com

201 N. Banker St.
 Effingham, IL 62401
 217.347.7151

WORTMAN PRINTING COMPANY



James Wortman Del Wortman

FOR ALL YOUR PRINTING & GRAPHIC DESIGN NEEDS
 1713 S BANKER ST EFFINGHAM, IL 62401 | PHONE: 217.347.3775 | FAX: 217.347.1082
WWW.WORTMANPRINTING.COM

Happy New Year

Print
Works
Like no other media.



Kingery Printing

3012 S. Banker • Effingham, IL 62401
800-743-5151 • kingeryprinting.com

STRONG, SOLID, COMMUNITY BANKING

1st National
Bank

WWW.FNBWATERLOO.COM



SINCE 1912



MEMBER FDIC



COUNTRY RHODES
Fundraising & Catering

Country Rhodes Fundraising & Catering provides quality food delivered to you fresh by our mobile kitchens!

CountryRhodes.com

(217) 347-3474



DEB SANDERS
Managing Broker
Cell 217-254-2416
office 217-342-2775
debsanders@consolidated.net

COLDWELL
BANKER



FIRST REALTY

901 North Keller Drive
Effingham, IL 62401

www.effinghamhomesearch.com

discover what you
LOVE

We LOVE irresistible products. From innovative skin care to on-trend cosmetics, Mary Kay offers products women love, and I can help you find your new favorites!

Contact me to discover more.



MARY KAY

Kathy Schroeder • Sr. Sales Director • 217-821-1422

95.7 **WCRC**
ALL AMERICAN COUNTRY

98.9 **ESPN**
THE GAME

WWW.EFFINGHAMRADIO.COM • EFFINGHAM RADIO APP

105.5 • 100.5
JACK fm
playing what we want*

Effingham News Talk
WCRA
AM 1090 / 99.5 FM / 96.3 FM

Cromwell Radio Group Affiliate/Cromwell Group, Inc. of Illinois
Sheila Myers - GM/Market Manager
405 South Banker Street, Suite 201 • Effingham, IL • (217) 342-4141



Heather Valinevicius
General Manager
Holiday Inn Effingham

1301 Ave of Mid America
Effingham, IL 62401
T: 217.540.7777 F: 217.540.7778
heather.valinevicius@kaedingmanagement.com
holidayinn.com/effinghamil

34 years **PATTON**
PRINTING & GRAPHICS
A Business Imaging Company

We.....

Design, Print & Promote
Your Business!

902 W WABASH AVE • EFFINGHAM, IL 62401

217.347.0220

www.pattonprinting.com

Cornerstone

TRAVEL LLC

1007 W. Jefferson Ave.
Effingham, IL 62401

- Destination Weddings
- Cruise's
- Vacations
- Honeymoon Trips



Contact John today!

217-347-TRIP (8747)

email: cornerstone_travel@yahoo.com

WEDNESDAY, FEBRUARY 8, 2017

Effingham Performance Center



**JACK
SCHULTZ**



**CHRIS
KOCH**



**LEWIS
HOWES**



**CHERYL
MITCHELL**

Register now at www.effinghamceo.com/ceoexperience

RISE TO GREATNESS.
BELIEVE IN YOURSELF.
BECOME IGNITED WITH
MOTIVATION AT THE CEO
EXPERIENCE.

Follow
us on
Social
Media

Facebook: Effingham
County CEO Experience
Instagram: effinghamceo
Twitter: EffinghamCEO

\$50 Off
Any Direct Mail Campaign

*Contact us for full details. Expires 12/25/2016

\$75 Off
Web Design Service

*Contact us for full details. Expires 12/25/2016

\$50 Off
Facebook Makeover

*Contact us for full details. Expires 12/25/2016

\$175 Value
Call us before 12/1/16 to
COMBINE ALL THREE

image squared marketing specializes in
FULL CIRCLE MARKETING CAMPAIGNS
that Leverage Social with Traditional Media, and Vice Versa.



217.690.7474

imagesquaredmarketing.com

**“Our
Marketing
is
Tearable!”**



Direct Mail
Online Advertising
Promo Items
Graphic Design
Web Design
Social Media
Marketing Strategy
Photography



PO BOX 363 • Effingham, IL 62401
www.anatime.com
618.322.6780



DOEHRING, WINDERS & CO. LLP

Certified Public Accountants

400 W. Jefferson Ave.
Effingham, IL 62401

(217) 342-0377
www.dwcopa.com

Evergreen
Nursing & Rehabilitation Center, LLC

*Stop In For
A Tour
Of Our Facility*

**Evergreen Rehabilitation
& Wellness Center**
Offers:
Rehab To Home
Respite Care
Hospice
Adult Day Care
Wound Care

1115 N. Wendt
Effingham, IL 62401

217-347-7121
www.evergreennursingrehab.com

**Farnsworth
GROUP**

Andrew Hanfland PE
Engineering Manager

office 217.342.5668
cell 217.343.6993
ahanfland@f-w.com

PHONE 217-536-6961



MARXMAN EXCAVATING
GENERAL CONTRACTOR



ROBERT (BOB) MARXMAN
Owner

BULLDOZING
TRENCHING

9629 N 1200th St
EFFINGHAM, IL 62401

Village
WINE & GIFT SHOP

109 S. Banker • Effingham • 217-347-0477
www.EffinghamVillagewine.com

Mapping Effingham's Progress!



PHELPS MAP SERVICE

P.O. Box 622
Charleston, IL 61920
PH. (217) 345-4007

phelpsmaps.com

Ruben Boyajian, M.D.
General Surgeon

Emily Boyajian, APN
Nurse Practitioner

Breast Care Specialist • Surgical Oncology
General and Laparoscopic Surgery • Gastrointestinal Endoscopy

904 Medical Park Drive, Suite 2
Effingham, IL 62401
(217) 347-2255

rboyajianmd.com

Express
EMPLOYMENT PROFESSIONALS



#1 Bank

in Effingham
County*

1-855-MY-MIDLAND | midlandsb.com

*FDIC Deposits Market Share - June 30, 2016. Member FDIC. Equal Housing Lender.



SBL Effingham Clinic

905 North Maple Ave. • Effingham, IL

- Allergy
- Audiology Services
- Lincolnland Hospice
- Laboratory Services
- Sleep Disorders Center

(217) 347-7077

(217) 540-6100
(Sleep Disorders Center)

1-877-796-5227
(Laboratory Services)

**Sarah Bush
Lincoln**

Trusted Compassionate Care

www.sarahbush.org



2016 New Members

AAA Mobility Specialist, LLC
Accuracy Firearms
Affordable Home Improvement, Inc.
AFLAC Insurance
Air Force Recruiting Office
ALL IN MEDIA
Beck's Hybrids
Branded Innovative Solutions
Burrow Turf Care
C & C Properties
ClearView Window Cleaning & Tinting Inc.
Crisis Nursery of Effingham County
Dammerman & Associates Benchmark Realty
Davurse
DHB Transmission Specialists
Doedtman Apartments
Don Bushue
Double K Auto Glass

Effingham Academy of Cosmetology
Fetching Mobile Pet Grooming and Dog Daycare
First Neighbor Bank, N.A.
Guaranteed Rate, Inc.
Heights Finance Corporation
Hollar's Design with Style, LLC
Hooks Painting Co.
James Rutledge
Justice Grown
Kenworth of Effingham
Kremer Pharmacy
Livin' It Up Transportation
Maple Grove Digital Marketing
Marco's Pizza
McKendree University
McMahon Meats
Midwest Aerial Survey
Modern Woodmen of America

Noah's Ark Pet Shoppe
Piotrowski Studios
Poehler's Pharmacy
Prudential Financial - Matt Roedl
Richard E. Workman Sports & Wellness Complex
SI Medical Inc.
Solan Chiropractic
SSC Chem-Dry
Stacey's House of Colors
Startup Effingham Legal Services, LLC
Tara McAllaster
The Clinic Effingham
The Dog
The Title Center
Wild Rose Boutique

A-B

#1 Network
2Fast4u Production
72VEST
AAIM Employers' Association
ADM Alliance Nutrition
Advanced Digital Solutions/Xerox Agent
Advanced Veterinary Care, LLC
AGE-Affordable Gas & Electric
Agracel, Inc.
Air Evac Lifeteam
Air Methods
Air Stamping Inc.
AKRA Builders, Inc.
Al's Tire Mart & Electronics
Allstate Insurance
Altamont CUSD #10
Altamont News Banner
Ameren Illinois
America's Best Value Inn
American Cancer Society
American Red Cross
Anatime Event Group
Anderson's Jewelry
Andes HealthMart
Anthony Acres Resort, Inc.
ApexNetwork Physical Therapy
Arab Termite & Pest Control
Aramark Uniform Services
Arrow Pest Control, Inc.
Artisan Depot Inc.
Auctions/Realty by Schackmann
Auto Glass Unlimited
B & L Machine and Design
B and B Homes
B B & K Development

Bahrns Equipment, Inc.
Balda Dental Office
Bales Unlimited Inc.
Ballard Nature Center
Bandy's Medical Equipment
Barlow Lock & Security, Inc.
Barr Construction & Remodeling, Inc.
Baseball Card Connection
Bauer Funeral Home
Beccue Builders Inc.
Best Western
Better Business Bureau-Eastern MO & Southern IL
Betty Fearday
Bev Soltwedel
Bierman Welding Inc.
Big Brothers Big Sisters Effingham County
Bill Nuxoll
BK Resources
Blessings in a Backpack
Bluegill Marina
Bob Shelton
Bob's Discount Home Improvement
Bonutti Clinic
Boos Enterprises Inc.
Brad Hastings
Bray Title Services
Brookstone Estates/Suites
Browns Drug Store
Brumleve Industries, Inc.
Buhnerkempe Plumbing & Heating Inc.
Burford Electric
Burkland's Florist & Gifts
Busey Bank
Bushue Human Resources Inc.



Be A Chamber Volunteer!



2016 Chamber Member of the Month Recipients are noted in the directory with a picture and their company name in bold.

C

Camp New Hope
Camp Walter Scott
Campos Family Dental
Cancer Care Specialists of IL/ Crossroads Cancer Center - July Member of the Month
Carle Physician Group
Carriage House Event Center
CASA of Effingham County
Casey's General Store
Catholic Charities
CCI RediMix
CEFS Economic Opportunity Corp.
Central Illinois Home Inspection Service Inc.
Central Illinois Oral Surgery
Century 21 - Realty Concepts
Charles Heuerman Trucking Co.
Charles Horin D.D.S.
Chuck's Satellite & Antenna
City of Effingham
Civil Design Inc.
Claude Coats
Clean Uniform Company
Click Video Productions LLC
CliftonLarsonAllen
Cobblestone Inn & Suites
Coldwell Banker/First Realty
Comfort Suites

D-E

Dale Carnegie Training/S.J. Grant & Assoc.
Dale Esker Construction
Dale Fitzpatrick
Dan Hecht Chevrolet-Toyota
Dan's Glass Inc.
Daniel J Clasby
Data Management Shredding
Deb's Catering Inc.
Delta Inn
Denny's
Designs Unlimited, Inc.
Detection Security Co., Inc.
Dieterich Bank
Dieterich Business Association
Dieterich Community Development Corporation
Dieterich Community Unit #30
Dimond Bros. Insurance Agency Inc.
Dirtbuster Carwash LLC
DMI - D. Martin Industries Inc.
Doehring, Winders & Co. LLP
Donnewald Distributing Company
Doppelt Creek Farm & Hunt Club
Dr. James C Graham S.C.
Dr. Margaret Merry-Niebrugge, DMD
Dr. Ruben Boyajian
Draves Trim Tone 'N Tan/Archery
Drees Enterprises LLC
Drees Plumbing Inc.
Drs. Sehy & Jones, Optometrists
Duckett's Carpet Care
Dust & Son Auto Supplies
Dust Electric
Dusty's Outdoor Media, LLC & Country Rhodes, Inc.

Commercial Refrigeration of Central IL, Inc.
Community Blood Services of Illinois
Community Directories, Inc.
Community Support Systems
Compass Advisory Group
Consolidated Communications
Continental Mills
Cornerstone Travel Agency
Cornerstone Wealth Management
COUNTRY Financial
Country Inn & Suites
Country Peddlers
Country Rhodes Inc.
CQI Associates
Creative1, Inc.
Credit Collection Partners
Cromwell Radio Group
Crossroads Bank
Crossroads Truck Equipment
Culture-A Frozen Yogurt Lounge, Inc.
Custom Family Homes Inc.
CW Motorsports



Effingham Dairy Queen-
June Member of the Month



Effingham Teutopolis News Report-
April Member of the Month



Cancer Care Specialists of Illinois-Crossroads
Cancer Center-
July Member of the Month

Eastern Illinois University
Ed Wolfe Construction, Inc.
Edward Jones - Adam Butts
Edward Jones - Lynn Deters
Effingham & Teutopolis News Report - April Member of the Month
Effingham Ambulatory Surgery Center
Effingham American Legion Post 120
Effingham Animal Rescue Sanctuary (EARS)
Effingham Area Crime Stoppers
Effingham Asphalt Co., Inc.
Effingham Auto Repair LLC
Effingham Builders Supply
Effingham Child Development Center
Effingham Co. Recycling & Effingham Co. Transfer Station
Effingham Country Club
Effingham County
Effingham County Committee on Aging
Effingham County Cultural Ctr and Museum Assoc.
Effingham County Farm Bureau
Effingham County Health Department
Effingham County Public Transportation
Effingham County Republican Party
Effingham CUSD #40
Effingham Daily News
Effingham Elks Lodge #1016
Effingham Homes
Effingham Knights of Columbus
Effingham Obstetrics & Gynecology Assoc.
Effingham Ophthalmology Associates
Effingham Performance Center
Effingham Printing Company
Effingham Public Library

Effingham Railroad Company
Effingham Regional Growth Alliance
Effingham Signs & Graphics
Effingham Surgical Associates, S.C.
Effingham Telcom Solutions Inc.
Effingham Tire & Auto Center Inc.
Effingham Travel Agency
Effingham Urology Associates, S.C.
Effingham Veterinary Clinic
Effingham Water Authority
EJ Water Cooperative, Inc.
Enterprise Dynamics Inc.
ESS Clean Inc.
Evergreen Nursing & Rehab, LLC
Express Employment Professionals

Are You Mobile?

Keep your Chamber in your pocket with MyChamberApp, where Chamber members and the public can find member businesses, local events, discounts and hot deals. Available to download for free on the iPhone, Android, and Blackberry.



F-H

Factory Connection
Fairfield Inn & Suites
Family Care Associates of Effingham S.C.
FARLEY Insurance & Investments
Farm Credit Services of Illinois
FARMWELD INC.
Farnsworth Group Inc. - August Member of the Month
Favorite Things LLC
FE Moran Security Solutions
Fifth Third Bank
Fine Arts, County of Effingham
Fire Equipment Service & Sales Inc.
Firefly Grill Inc.
First Mid-Illinois Bank And Trust
First National Bank of Waterloo- Effingham
First National Bank of Waterloo- Stewardson - March Members of the Month
Four Scoops, Inc. dba Dairy Queen - June Member of the Month
Foxy Styles Salon & Spa
Frank Kabbes
Fresh Digs, Inc.
Fresh Graphic Design Studio
Frisse & Brewster Law Offices
Fujiyama Japanese Steak House
Gabby Goat
Girl Scouts of Southern Illinois
Glik's
Global Technical Systems Inc. - October Member of

I-K

I.C. Enterprises, Inc.
Il Forno Restaurant
Illinois Farm Business, Farm Management
image squared marketing, inc.
Imagine This Marketing Group
Innovative Staff Solutions
Interstate Batteries of South Central IL
Irwin Telescopic Seating Company
It's Almost Home
J & J Ventures Gaming LLC
J & R Collision Centers
J.B. Esker & Sons, Inc.
JA FA Photo
JAD Imports Inc. dba Stadium Cinemas
James R. Gartner
Jansen Cable Construction, Inc.

L

L.J. Swingler & Sons Inc.
La Quinta Inn & Suites
Lake Land College
Lake Pointe Apartments
Lake Sara Area Water Cooperative, Inc.
Lake Sara Marina
Lakeland Rehabilitation & Health Care Center, LLC
Lakeside Services
Land of Lincoln Credit Union

the Month
Goeckner Accounting & Financial Services, Inc.
Goeckner Bros. Inc.
Grandma's Twice is Nice
Grunloh Building Inc
Grunloh Construction, Inc.
H & R Block
H and W Service Center Inc.
Hampton Inn & Suites
Hawickhorst and Associates
Heartland Beef dba Arby's
Heartland Dental
Heartland Family Dental Care
Heartland Health Foods
Heartland Human Services
Heartland Landscaping Inc.
Heather and Marty - vocal/guitar duo
Heidanes Hidden Timbers
Henry Merz
Heritage Builders of Effingham, Inc.
Hetzels Overland Transport Inc.
hibu Inc.
Hodgson Mill, Inc.
Hoelscher Concrete Construction Inc.
Holiday Inn - January Member of the Month
Holland Energy, LLC
Homebuilders Plus, Inc.
Hoosier Hospitality Consulting LLC
HSBS St. Anthony's Memorial Hospital

Jansen Computers
Jansen's Auto Sales
Jansen's Heating & Air
Jedco Sales, Inc.
JFJ Eyecare, Ltd. dba Quantum Vision Centers
Jimmy John's
Job Match, Inc.
Joe Sippers Café
Joe's Pizza & Pasta
John Boos & Co.
John Kirby & Assoc.
John Kroeger, D.M.D.
John Lewis Concrete Construction Inc.
John M Johnson
Johnson Funeral Home
Journal Gazette & Times Courier/Herald & Review

Larry O'Dell
Lavender Ridge: Dignified Memory Care
LeFevre Oldfield Myers Apke and Payne Law Group, Ltd.
Legacy Harley-Davidson
Leisure Times Pools & Spas Ltd.
Lexington Inn & Suites
Lifeline Christian Books & Gifts
Linda L. Mitchell
Linders Limited LLC/McDonald's



Farnsworth Group- August Member of the Month



First National Bank of Waterloo- March Member of the Month



Global Technical System Inc.- October Member of the Month

K & M Floral Shoppe, Inc.
K. Wohltman Construction, Inc.
KC Investment LLC dba Camp Lakewood Campground
KCH Mechanical Inc.
Keller Convention Center
Kemper CPA Group
Ken & Norma Lansing
Kiefer Landscaping
Kinery Printing Company
Kirby Risk Electrical Supply Co.
Koerner Distributor Inc.
KTD Computer



Holiday Inn - January Member of the Month

Lions Liquors
Local Workforce Investment Area 23
Longhorn Buildings LLC
Loudon Machine, Inc.
Lustig Custom Cabinet Co.

M-N

Mansfield's U-Stor-It
Martin's IGA
Marxman Excavating
Mary Kay Cosmetics
Maurices
Maxedon Landscaping
Mayhood Properties L.L.C.
MBI Construction
McDevitt, Osteen, Chojnicki & Deters, LLC - February Member of the Month
McHugh Hospitality Group, Inc.
Mechanovent Corp. (A New York Blower Co.)
Mederi Caretenders Home Health
Mediacom Business
Merz Heating & Air Conditioning Inc.
Mette's Cabinet Corner Inc.
Meyer Funeral Home
Meyer Oil Company
Mid America Motorworks
Mid Illinois Equipment Sales

O-R

Office of Congressman John Shimkus
One Hope United
Oneighty
Opportunities For Access
Orr Law, LLC
Owen Motorsports
Pagel Silver Dollar Lanes
Pals Electric Inc.
Pam Crisman
Party Worx
Pat Copple
Patterson Companies Inc.
Patton Printing & Graphics - November Member of the Month
Peerless of America, Inc
Pepsi Mid America
Personal Finance Company

S

Sacred Heart Parish
Sandra Walk, Architect
Sandschafer Electric Inc.
Sanitation Service, Inc
Sarah Bush Lincoln
Sbarro's
Schaefer Appraisal Service
Scheid Diesel Service Company, Inc.
Schmid Auction & Realty
Schultheis Garage and Classics, LLC
Schultz Investment Company
Schumacher Orthodontics
SDS Computers (System Development Services, Inc.
Seagle Tax and Financial Services, Inc.
Sears, Rohloff Family Corp.
Security Alarm Corporation
Security Finance
Senator Kyle McCarter
Sentinel Pest Control

Mid-Illinois Concrete, Inc.
Mid-Illinois Medical Care Associates, LLC
Midland States Bank - September Member of the Month
Midwest Office
Midwest Toppers & Pickup Accessories Inc.
Mihlbachler Insurance Agency, Inc.
Milano & Grunloh Engineers, LLC
Morgan Distributing Inc.
NAPA Auto Parts
National Bank At Effingham
National Rifle Association of America
National Trail Development LLC
New Health Chiropractic
New Hope Church
Niebrugge Lumber Company, Inc.
Niebrugge Plumbing & Electric
Niebrugge's Furniture
Niemerg's Steak House
Northside Ford-Lincoln

Nova Solutions, Inc.
NOVATEK Medical Rental Group Inc.
Nuxoll Food Center



Midland States Bank-
September Member of the Month



McDevitt, Osteen, Chojnicki & Deters-
February Member of the Month

Rides Mass Transit District
Ring Financial Inc.
Roepke Overhead Door Co.
Roger's Home Appliance-Direct Maytag
Rotary Club of Effingham
Roy Schmidt Auto Sales
Roy Schmidt Honda - December Member of the Month
RPM - Reliable Professional Maintenance Inc.
Rural King
Rush Truck Center - Effingham
Russ Braunecker Cadillac, Buick, GMC



Patton Printing & Graphics-
November Member of the Month

Stanfield Chiropractic
STANG Arts Studio & Gallery Inc.
State Representative David Reis
State Representative John Cavaletto
Steffen Heating/Air Conditioning Inc.
Stevens Industries, Inc
Stillwater Enterprises, Inc.
Support Products Inc
Susan Hanfland
SWAN

ServiceKing Collision Repair Centers
Servpro
Sherwin Williams Company
Sherwin Williams Paint
Shoe Sensation
Siemer & Fuhr
Siemer Milling Company
Siemerworks-Crossfit Effingham
Smith Moore
Smith Realty Group of Effingham, LLC
South Central FS
Southeastern Illinois Community Foundation
Southern Illinois Hand Center - May Member of the Month
Southtown Car Wash
Spectrum Screen Graphics
Sporty's Beverage Connection, LLC
Springfield Clinic
St. Anthony Church

T

TAP Business Systems
Taylor Law Offices, P.C.
Ted Koester, D.M.D., P.C.
Teutopolis Auto Repair Inc.
Teutopolis Auto Sales Inc./Webster Tire and Auto Service
Teutopolis Community For Progress
TGI Friday's
The AutoMall of Effingham
The Car Company of Effingham, Inc.
The Center For Jaw and Facial Surgery, P.C.
The Equity
The Glenwood Assisted Living
The Healing Jukebox
The Midway
The Mill
The Sauced Up Smokers
The Thomas Shop
The Villas of Holly Brook
The Wellness Loft
The Zone 24 Hour Fitness
Thoele Plumbing Inc.

U-Z

Unique Personnel Consultants
United Way of Effingham County
University of Illinois Extension-Effingham Co.
Utz and Associates Architects P.C.
Van Dyke Culvert Sales & Backhoe Service
Vantage Outsourcing
Versatech LLC
Viamedia
Village of Dieterich
Village of Strasburg
Village of Teutopolis
Village Wine & Gift Shop
Visionary Eyewear, LLC
W S Broom & Co. Inc.
W.E.T. Inc.
Wabash Tire and Auto

Three Chicks and a Stage
Tick Tock Energy, Inc.
Tingley Insurance Agency, Inc.
TNT Recycling
Tod Lancaster
Tom Henderson - State Farm Insurance
Total Quality Warehouse
Totten Law Office LLC
Travel Centers of America
Trigg's Flooring
TriPower Towing and Recovery/Tri Parts Truck Salvage
Tucker Accounting Service Inc.
Turnkey Comupter Systems, Inc.
Tuscan Hills Winery
Tytia Habing Photography



Roy Schmidt Honda-
December Member of the Month



Southern Illinois Hand Center- May Member of the Month

Wal-Mart #0936
Walks Auto Body
Walnut Street Weddings
Washington Savings Bank
Waupaca Foundry Formerly HMAC
WCIA
Weber Optiks
Weber's Clothing & Jewelry
Weis Insurance Agency, LLC
Wells Fargo Advisors, LLC.
Wente Plumbing & Fire Protection
West & Company, L.L.C.
Whiskey Bend Entertainment
Wiedman Cleaners, Inc.
Willowbrook Memory Care Residences
Wireless Stores Inc.

Witt's Smokehouse
Woodlawn Cemetary/Effingham Monument
Woods Advisors, LLC
Wortman Printing Company
Wright's Furniture & Flooring
WTWO TV-Illinois Bureau Office
Y Yard Auto and Truck Inc.
Zona's on the Lake

THANK YOU for your continued investment in the Chamber!

Join Our Winning Team in 2017!

- Invest - Chamber Volunteer Opportunities
- Grow - Great Marketing Opportunities
- Network - Credibility & Visibility
- Incentives - Save Money & Time
- Train - Access to Valuable Business Resources & Tools
- Engage - Advocate for Community Support & Growth



Get Noticed. Get Exposure. Get Business.

Chamber Network Magazine - Online and in Print!
Message Center - Seen by over 20,000 vehicles daily
Stay Informed - www.EffinghamCountyChamber.com

Join our **Email Marketing** List! Reach over 1400 area decision makers with your business message through our E-Blast Program. Call Becky Brown at (217) 342-4147 for more information.



Calendar of Events 2017

FEBRUARY

- Feb. 3 First Friday Luncheon
- Feb. 8 CEO Experience
- Feb. 9 Business After Hours — *Prudential Financial*
— *Rich & Angie Hartke & Matt Roedl*
- Feb. 21 Tech Tuesday
- Feb. 23 Business After Hours — *McDevitt, Osteen, Chojnicki, & Deters LLC*

MARCH

- Mar. TBD Community Celebration of Excellence Breakfast
- Mar. 3 First Friday Luncheon
- Mar. 9 Business After Hours — *Effingham Surgical Associates*
- Mar. 16 Business After Hours — *Legacy Harley-Davidson*
- Mar. 21 Tech Tuesday
- Mar. 22 Coffee & Connections

APRIL

- Apr. 6 Business After Hours — *The Villas of Holly Brook*
- Apr. 7 First Friday Luncheon
- Apr. 18 Tech Tuesday
- Apr. 18-26 Peru & Machu Picchu Trip
- Apr. 28 Spring Radio Day with 95.7

MAY

- May 2 CEO Trade Show
- May 4 Converge Business After Hours
- May 5 Employee Appreciation Luncheon
- May 16 Tech Tuesday
- May 18 Business After Hours — *First National Bank of Waterloo*
- May 19 Golf Outing

JUNE

- June 2 Scholarship Recognition Luncheon
- June 8 Business After Hours — *Roy Schmidt Honda*
- June 16 Summer Food Festival
- June 20 Tech Tuesday
- June 21 Coffee & Connections

JULY

- July 2 Chamber Centennial Summer Celebration
- July 7 First Friday Luncheon
- July 18 Tech Tuesday
- July 28 & 29 EffingHAMJAM

AUGUST

- Aug. 4 First Friday Luncheon
- Aug. 15 Tech Tuesday
- Aug. 23 Coffee & Connections

SEPTEMBER

- Sept. 1 First Friday Luncheon
- Sept. 19 Tech Tuesday
- Sept. 26 Top Leaders Under 40 Awards
- TBA Fall Social

OCTOBER

- Oct. 5 Effingham County Manufacturing Day
- Oct. 6 First Friday Luncheon
- Oct. 9-18 Italy Trip
- Oct. 13 Chili Fest
- Oct. 17 Tech Tuesday
- Oct. 26 Fall Radio Day with 97.9

NOVEMBER

- Nov. 2 Business After Hours — *Village Wine & Gifts*
- Nov. 3 First Friday Luncheon
- Nov. 8 Coffee & Connections
- Nov. 21 Tech Tuesday
- Nov. 25 Hometown Christmas/Small Business Saturday

DECEMBER

- Dec. 1 First Friday Luncheon
- Dec. 12 Tech Tuesday

Over 150 Events attended by over 12,000 people in 2016!
If you would like to host or sponsor an event this year, coact the Chamber!

A special THANK YOU to everyone that helps us do our job!

Our Partners in Business & Community Growth



Effingham County Chamber of Commerce

903 North Keller Drive • P.O. Box 643 • Effingham, IL 62401
217.342.4147 • EffinghamCountyChamber.com



Becky Brown, Membership Director
Norma Lansing, President & CEO
JoAnn Sasse Givens, Workforce Development Director
Grace Zeller, Intern

The Chamber 360 is published by the Effingham County Chamber of Commerce. Every effort is made to ensure the accuracy of the information in this publication. The Chamber can not guarantee the correctness of all information available to them and assumes no liability arising from errors and omissions. © Copyright 2017 Effingham County Chamber of Commerce. All rights reserved. Reproducing any part of this book by photocopying, by electronic storage and retrieval or by any other means is prohibited.



BUSINESS LOANS

Life.
POWERED BY

Washington
Savings Bank

Congratulations to the Effingham County Chamber of Commerce on 100 years of service!

Washington Savings Bank has had the privilege of supporting our local businesses for over 130 years.

We are 100% committed to help strengthen the community we love, live, and work in.

If you're ready to grow your business, Washington Savings Bank is ready to help. Ask one of our commercial lenders how you can begin building your business dreams today!

www.washingtonsavings.net

Effingham

Mattoon



Member
FDIC

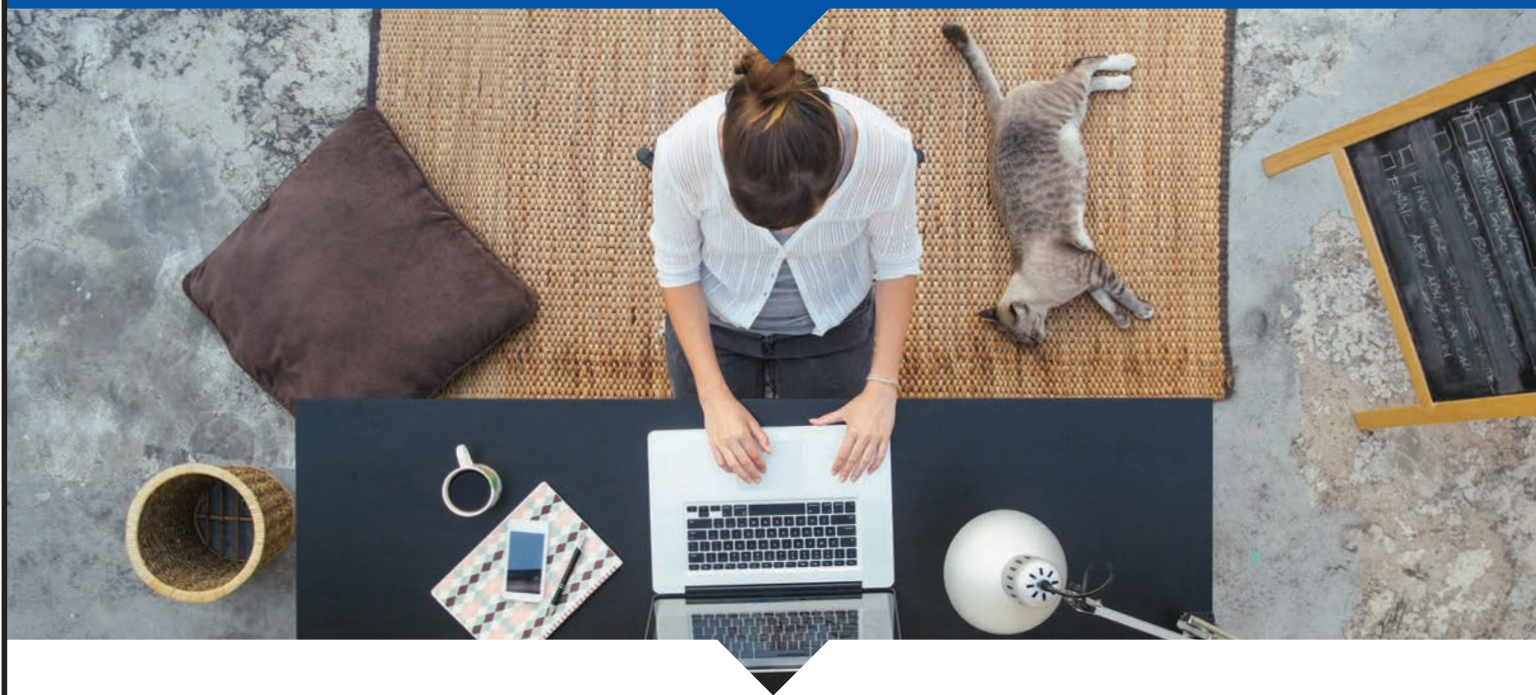


200 S. Banker St.
217.347.7173

1300 N. Keller Dr.
217.347.7127

1111 Charleston Ave.
217.235.5411

THE POWER TO WORK, PLAY AND BE AWESOME



Power up your business and home with Consolidated Communications

Welcome to the power to be and do your best. The power to stay connected, share ideas or indulge in your favorite entertainment with no glitches, delays, or downtime. Whether you're at work or play, Consolidated Communications makes life better with access to CCI fiber⁺, one of the fastest, most reliable networks in the nation. Get Consolidated Communications and get the power.



POWERED BY
CCI fiber⁺

POWER UP YOUR BUSINESS

- + Data & Internet
- + Voice
- + Cloud Services
- + Managed & Hosted
- + IT Services

POWER UP YOUR HOME

- + High-Speed Internet
- + Digital TV
- + Phone
- + Home Automation & Security

*Not all services available in all areas

Call 844.YOUR.CCI or visit consolidated.com